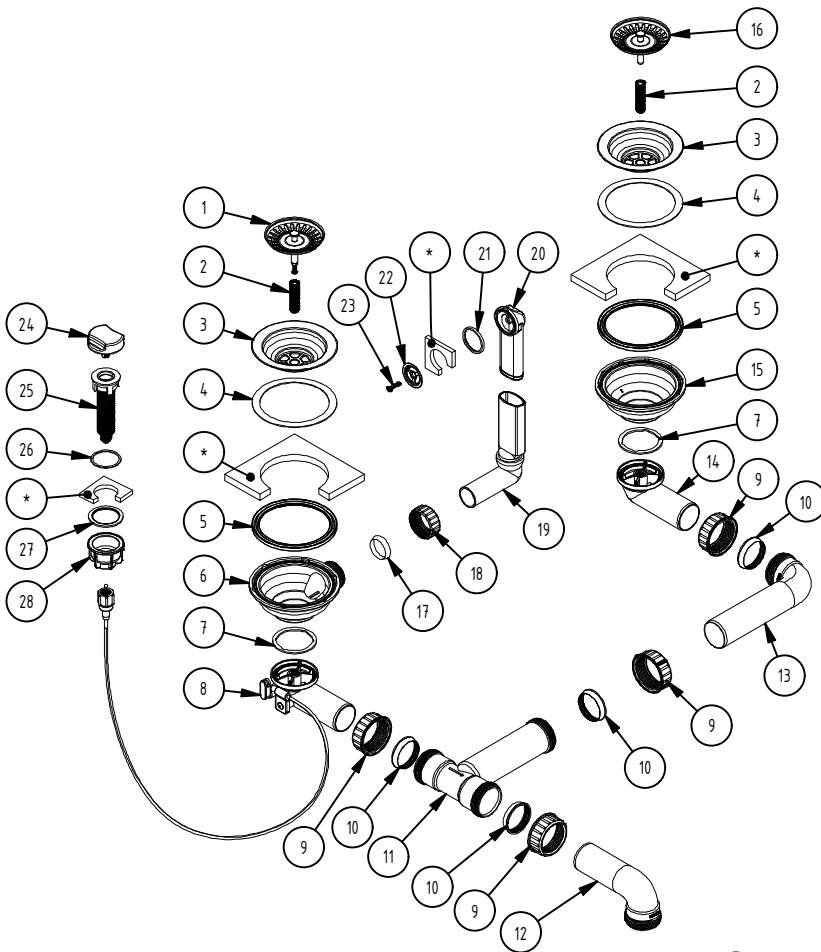
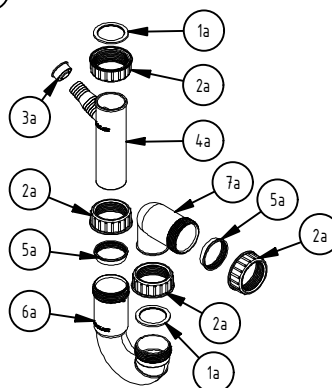


| NUMBER | DESCRIPTION-EN | Q.TY |
|--------|----------------|------|
| 1b | clamp | 12 |
| * | sink | |



| NUMBER | DESCRIPTION-EN | Q.TY |
|--------|--|------|
| 1 | pop-up basket plug | 1 |
| 2 | M12 fixing bolt | 2 |
| 3 | waste strainer | 2 |
| 4 | gasket between the sink and the waste strainer | 2 |
| 5 | waste body gasket | 2 |
| 6 | waste body with overflow outlet | 1 |
| 7 | gasket between elbow pipe and waste body | 2 |
| 8 | elbow pipe for waste body | 1 |
| 9 | G1-1/2" nut | 4 |
| 10 | conical gasket | 4 |
| 11 | T-pipe | 1 |
| 12 | 90mm threaded elbow pipe | 1 |
| 13 | 145mm threaded elbow pipe | 1 |
| 14 | elbow pipe | 1 |
| 15 | waste body | 1 |
| 16 | manual basket plug | 1 |
| 17 | small conical gasket | 1 |
| 18 | G1-1/8" nut | 1 |
| 19 | overflow pipe | 1 |
| 20 | overflow head | 1 |
| 21 | gasket for overflow | 1 |
| 22 | overflow grid | 1 |
| 23 | screw for overflow | 1 |
| 24 | control knob | 1 |
| 25 | pop-up | 1 |
| 26 | upper gasket for pop-up actuator | 1 |
| 27 | flat gasket | 1 |
| 28 | ring nut for pop-up actuator | 1 |
| * | sink | |



| NUMBER | DESCRIPTION-EN | Q.TY |
|--------|-------------------------------|------|
| 1a | flat gasket | 2 |
| 2a | G1-1/2" nut | 4 |
| 3a | cap for dishwasher connection | 1 |
| 4a | dishwasher connection | 1 |
| 5a | conical gasket | 2 |
| 6a | U-trap | 1 |
| 7a | G1-1/2" angle | 1 |