

Fabriqué en
FRANCE



10 ans
garantie

Hors vitrages

Facile à poser



x2

Rapide à monter



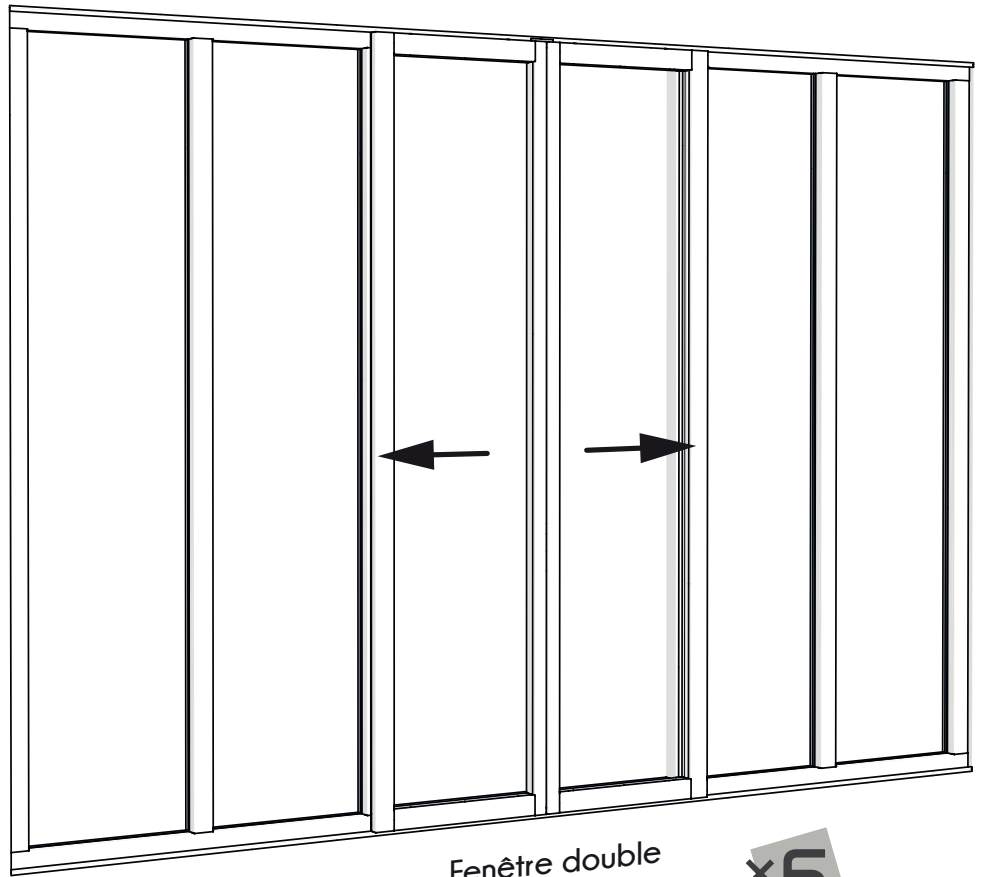
4h

Kit'atelier®

Verrière d'intérieur à monter soi-même

Verrière Passe-plat

Verrière avec fenêtre coulissante incluse



Fenêtre double

x6 Vitrages

MATÉRIEL NÉCESSAIRE (NON FOURNI)



Visseuse
Perceuse



Tournevis cruciforme



Ciseaux



Clé Allen 2,5

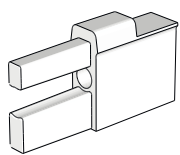
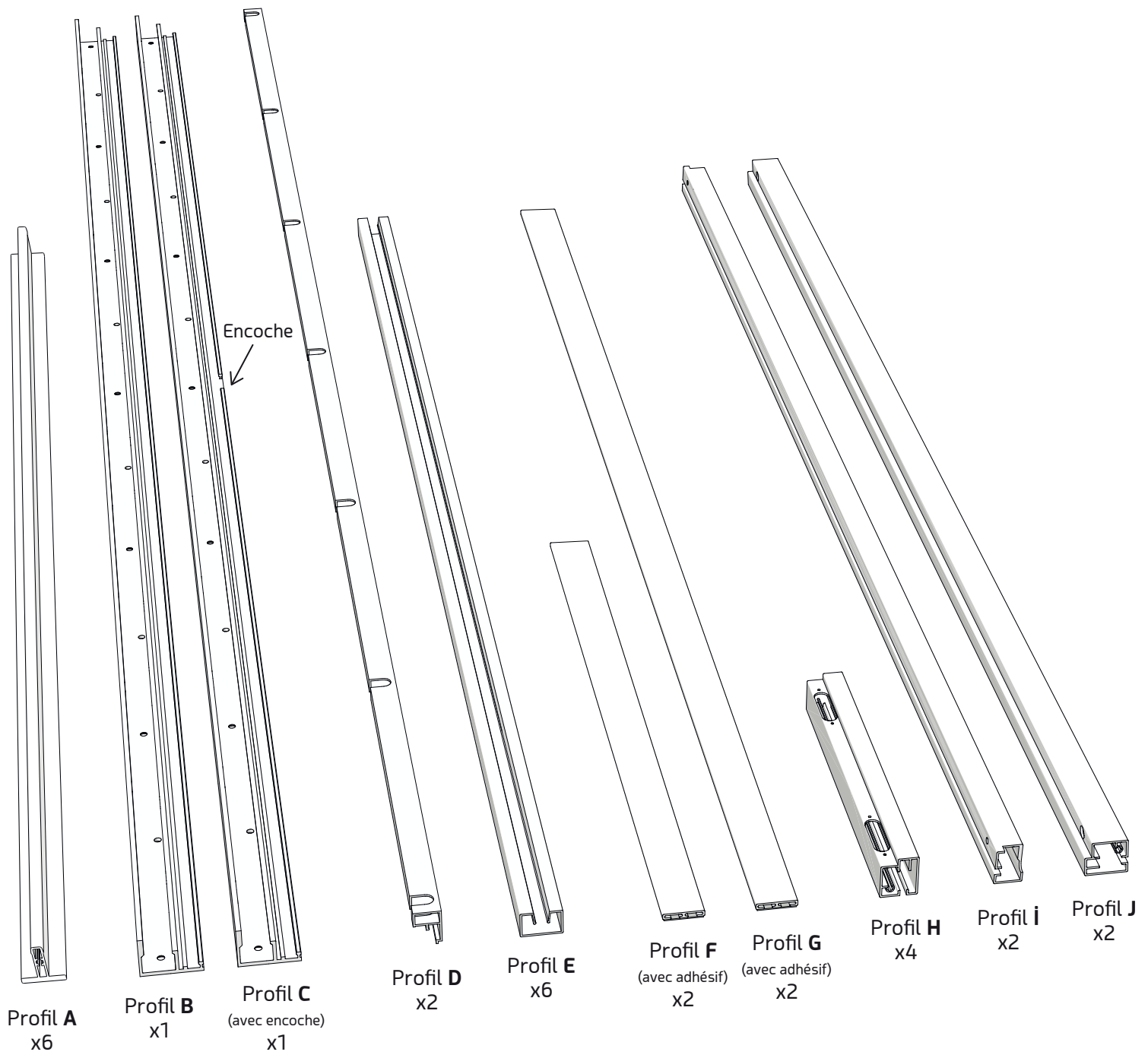


Niveau à bulle

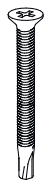


Maillet

COMPOSITION DE VOTRE COLIS



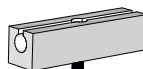
K
Insert
x12



L
Grande vis
x20
(8 noires + 12 brutes)



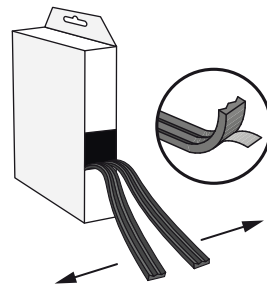
M
Petite vis
x16



N
Butée
x1



O
Mousse adhésive
x12



P
Joint adhésif



Q
Cale
x8



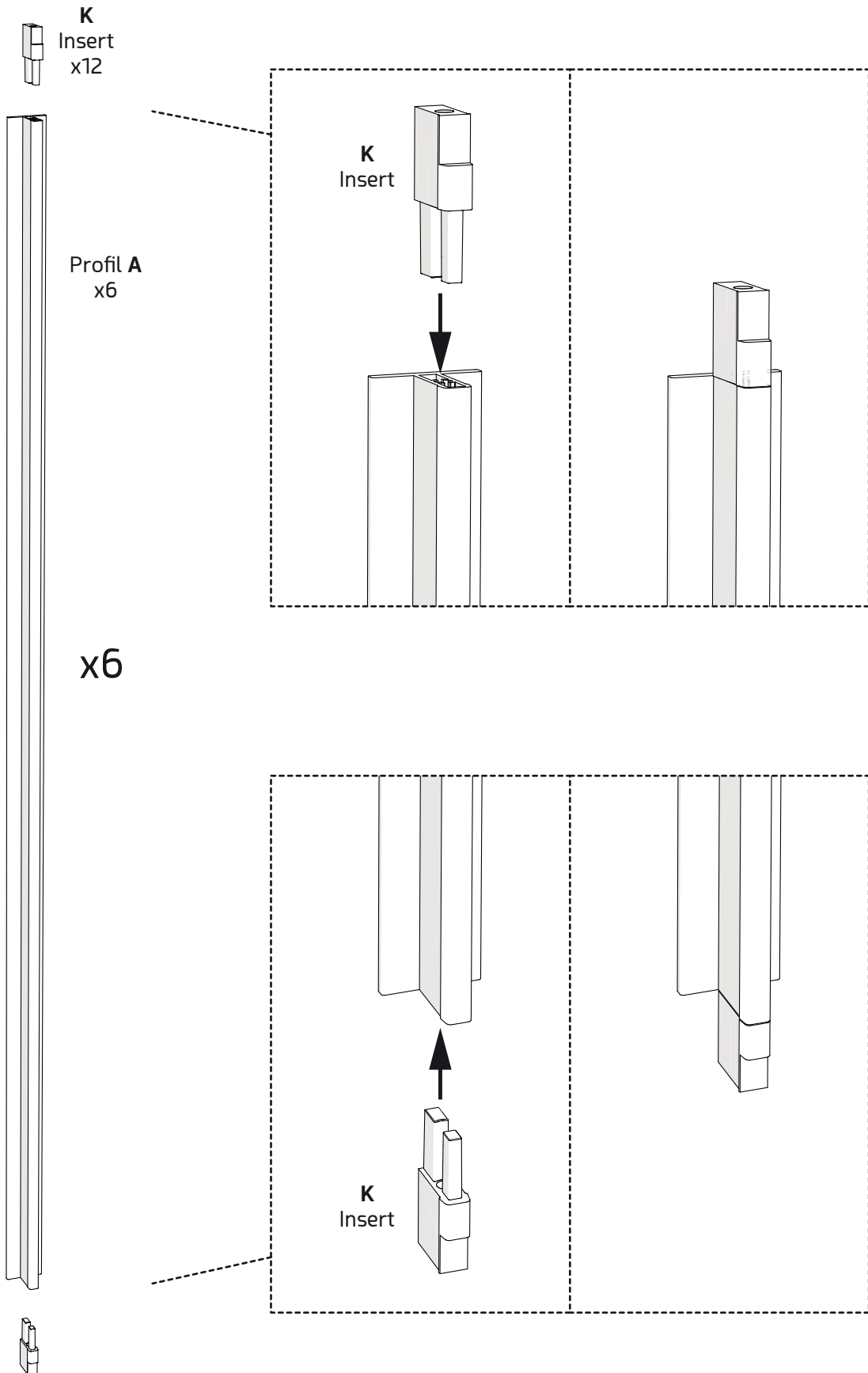
R
Roulette
x8

ÉTAPE 1

Assemblage des profils A + inserts K

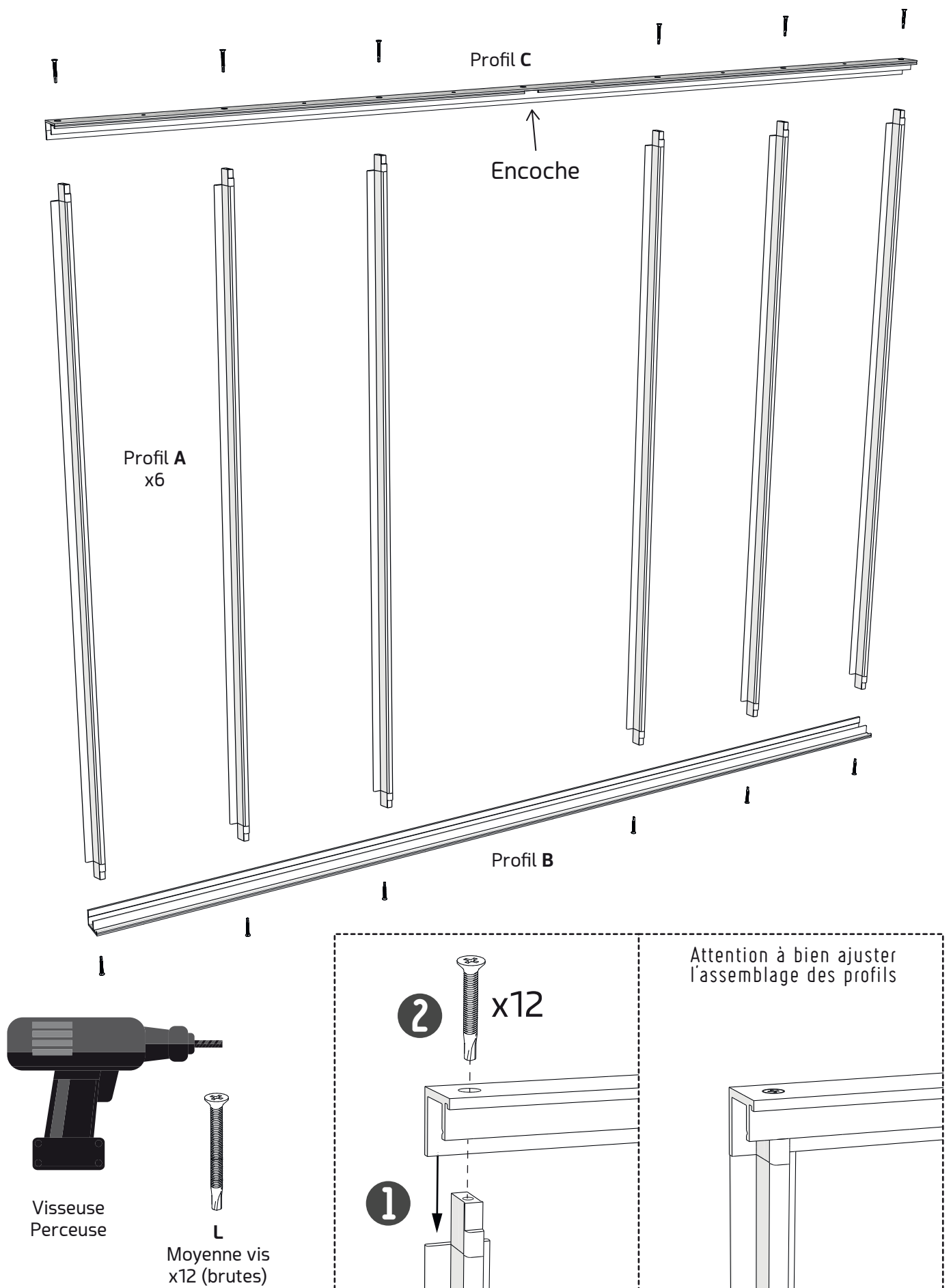


Maillet



ÉTAPE 2

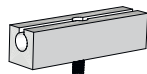
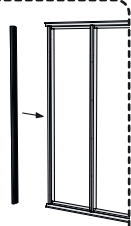
Assemblage des profils **A** + profil **B** + profil **C** (avec encoche)



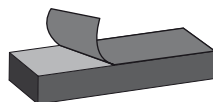
ÉTAPE 3

Butée N / pose des mousses O

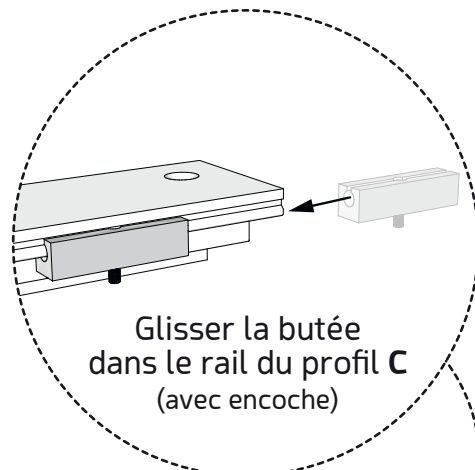
Pour l'installation d'un poteau de terminaison, suivez la notice présente sur son emballage. (Installation à effectuer avant la pose des mousses)



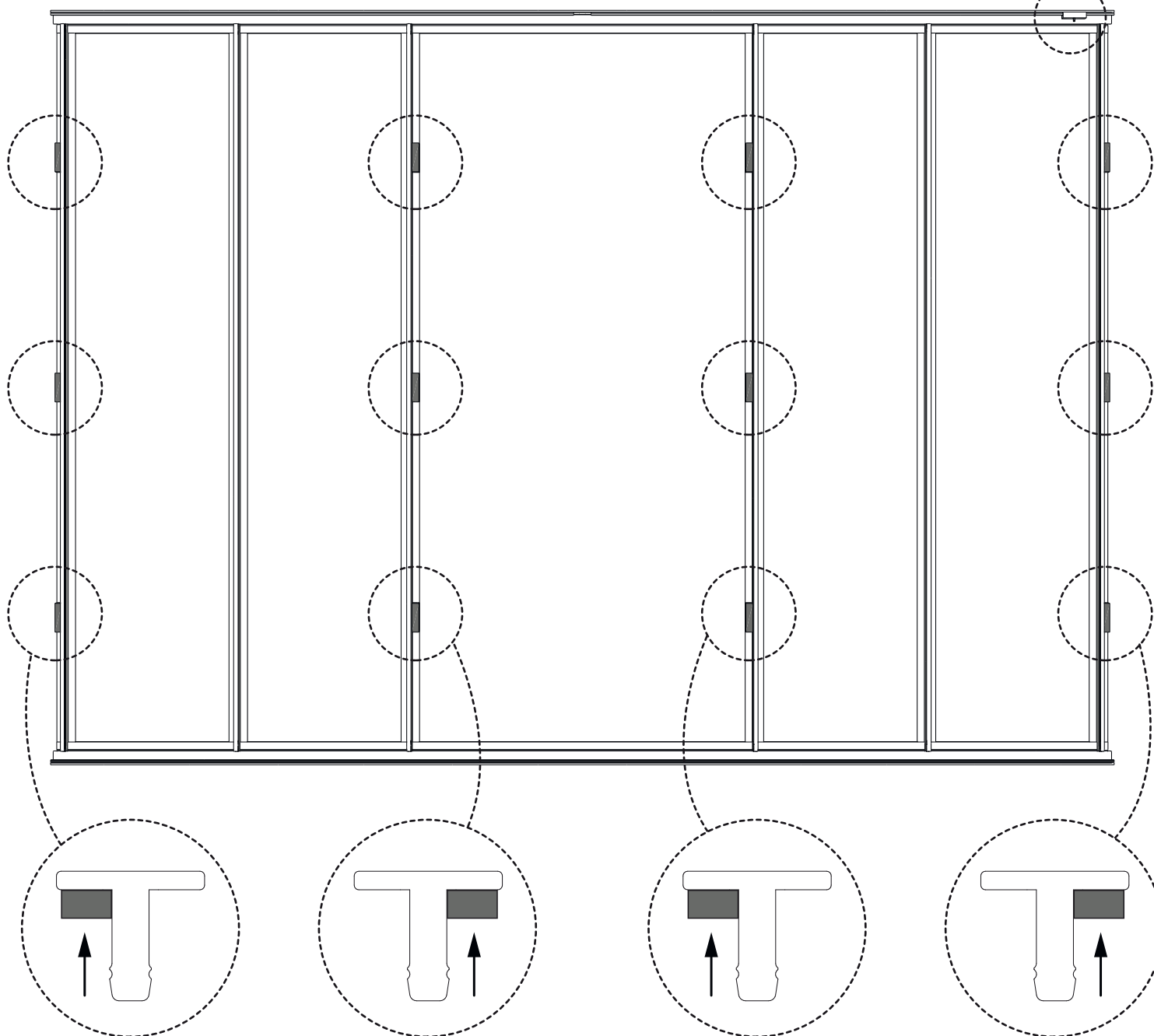
N
Butée
x1



O
Mousse adhésive
x12



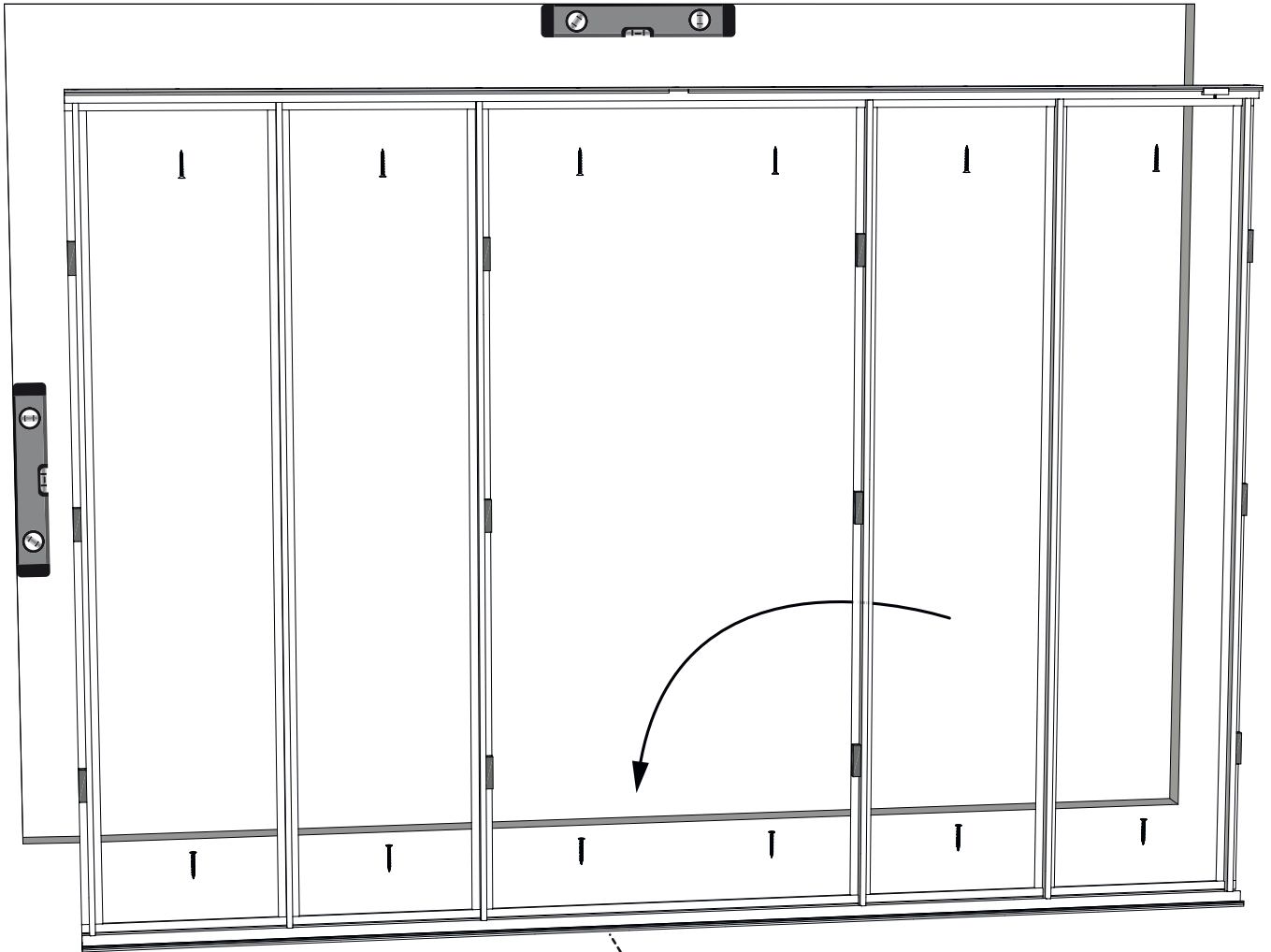
Glisser la butée dans le rail du profil C (avec encoche)



ÉTAPE 4

Fixation du châssis

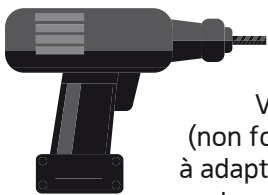
MUR



Niveau à bulle

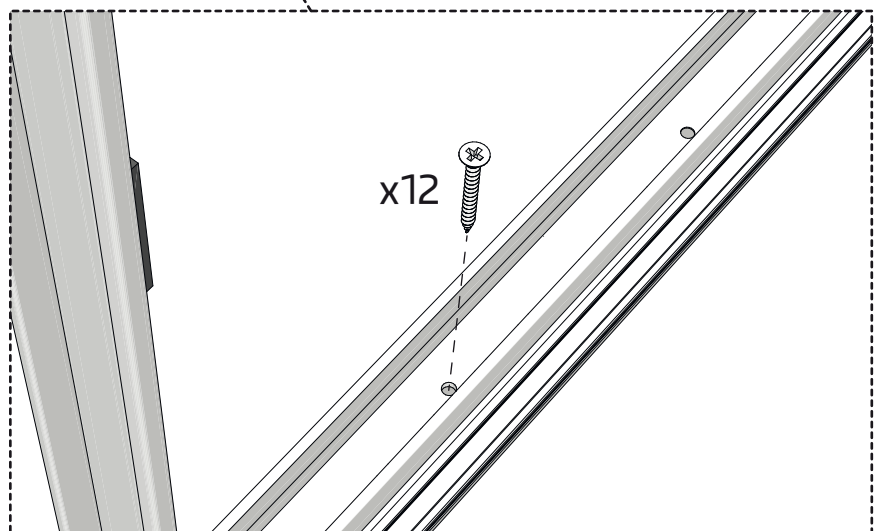


Visseuse/Perceuse

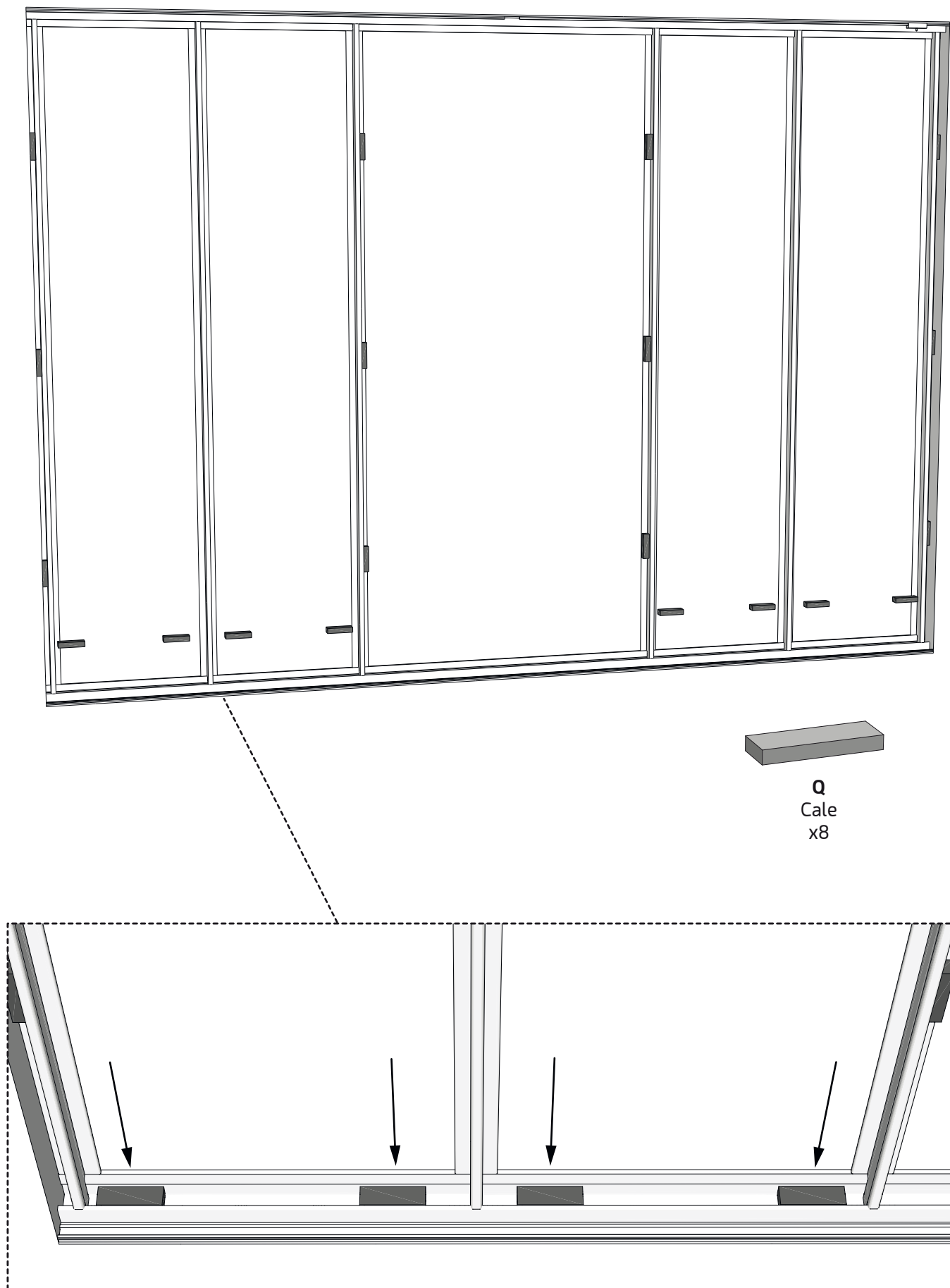


Vis
(non fournies)
à adapter selon
votre support

x12

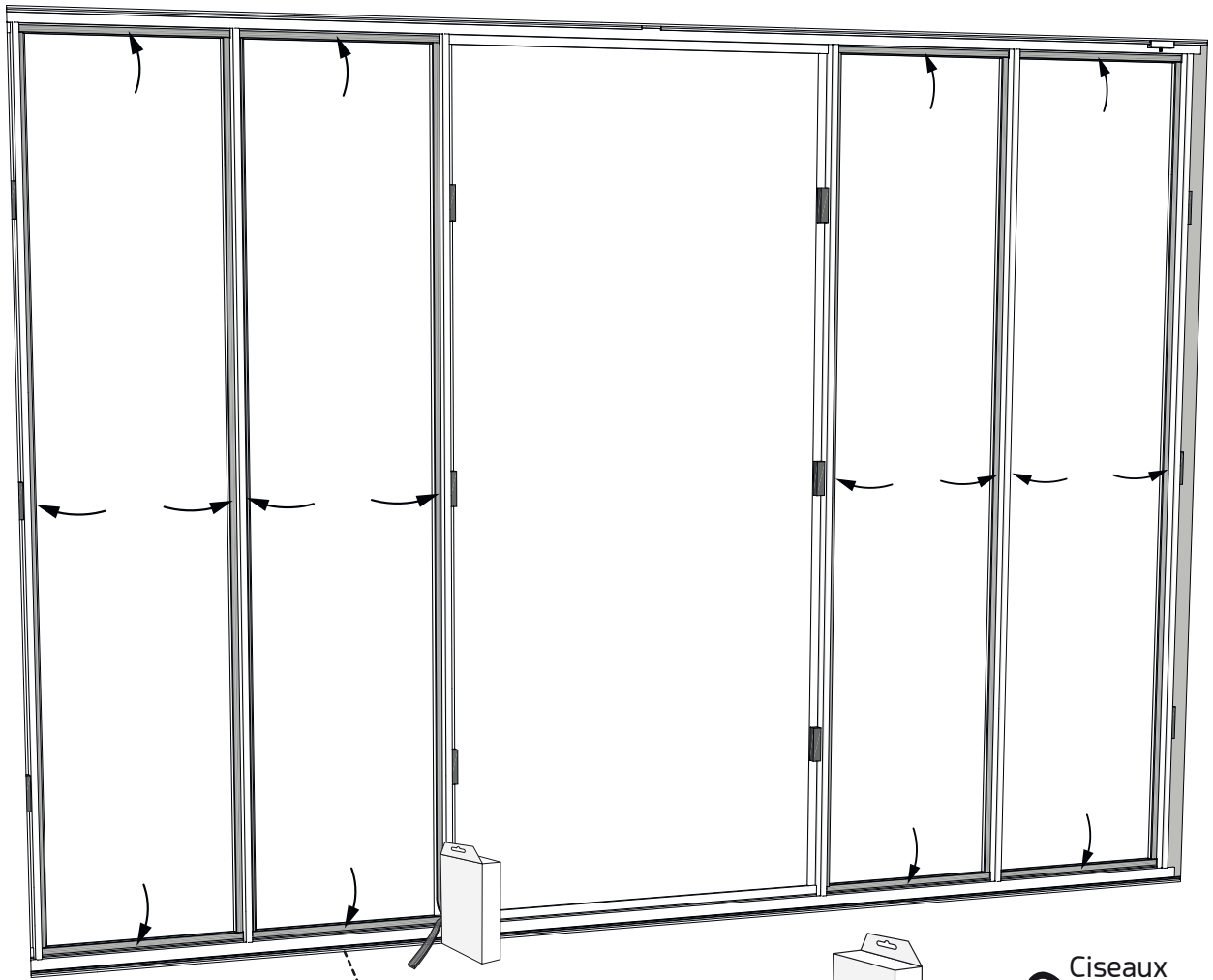


ÉTAPE 5 Mise en place des cales Q

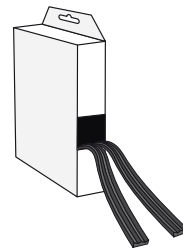


ÉTAPE 6

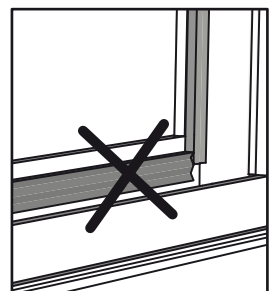
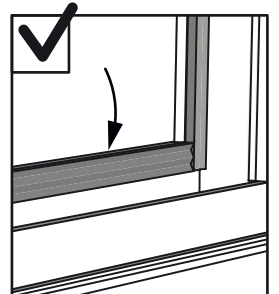
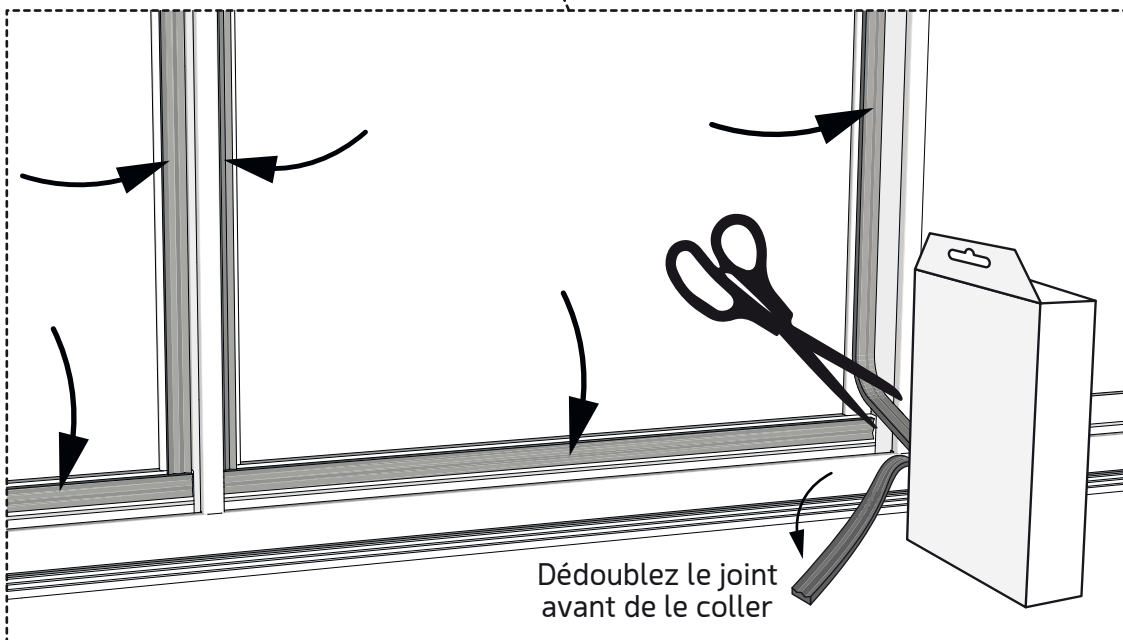
Mise en place du joint P



P
Joint adhésif



Alignement

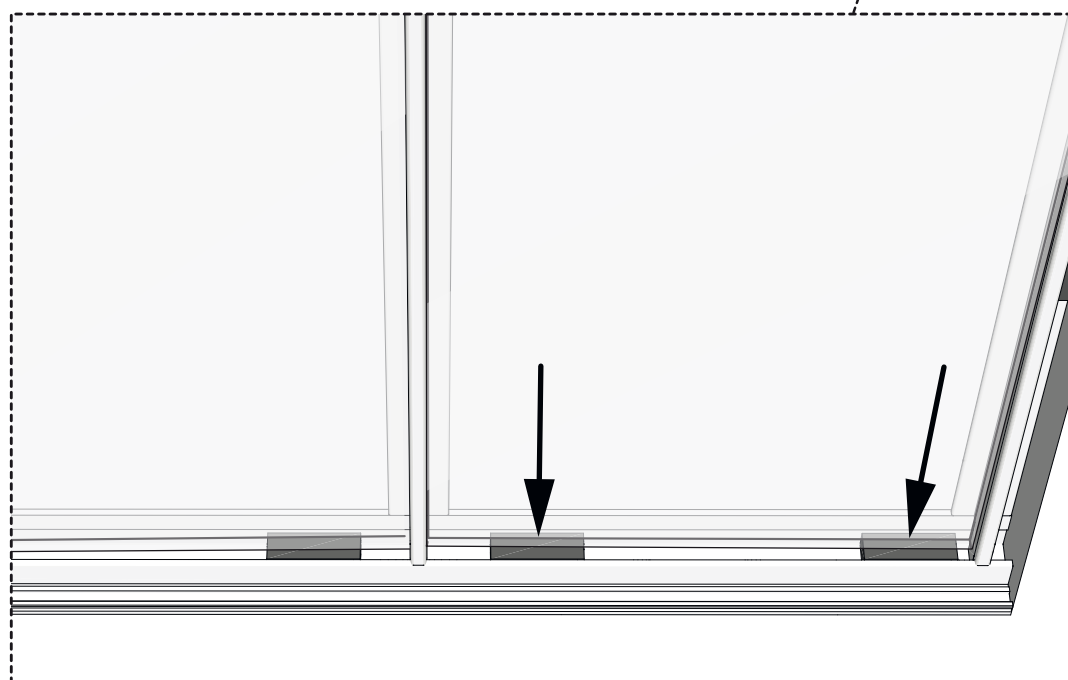


ÉTAPE 7

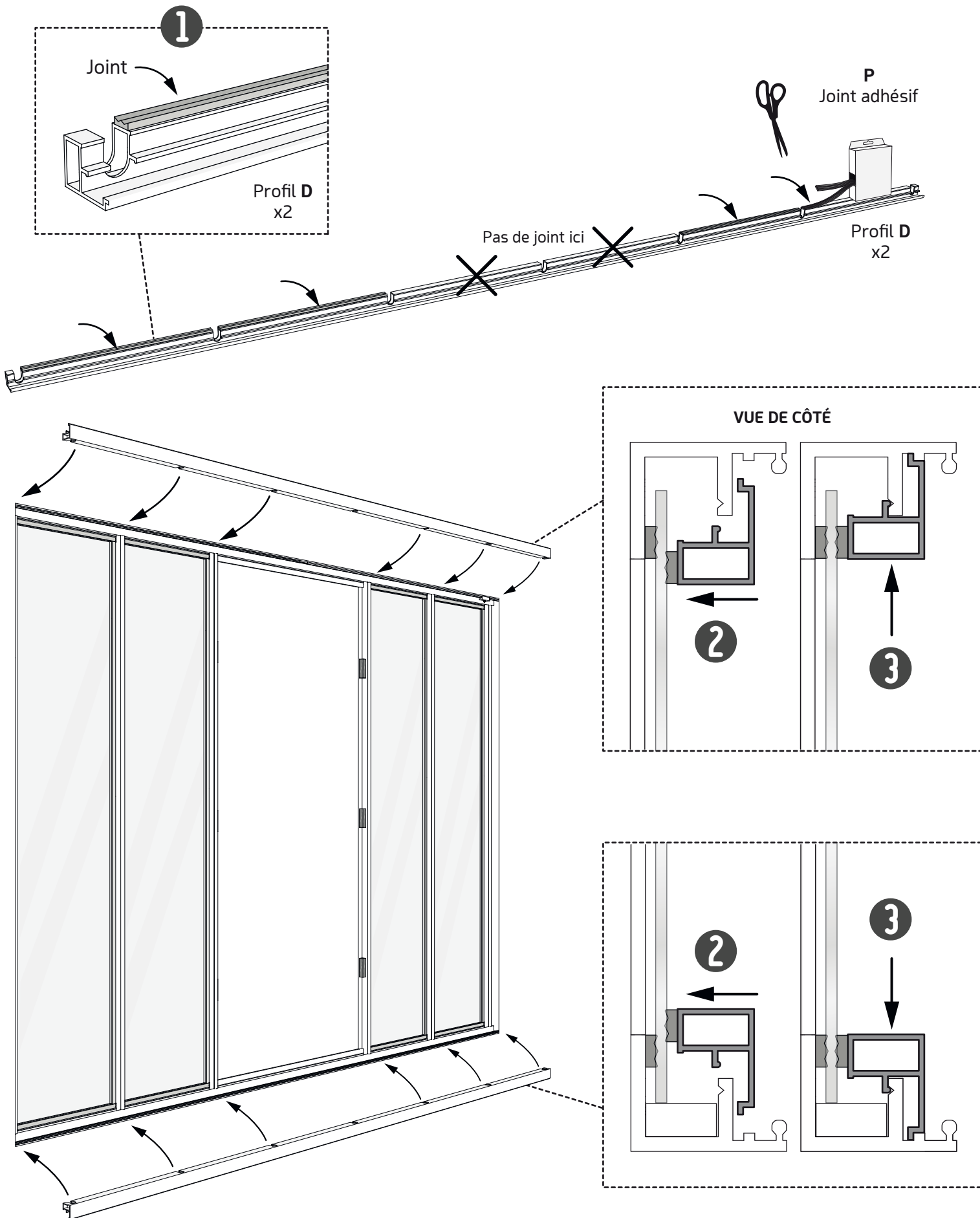
Installation du vitrage sur le châssis



Vitrage
x4

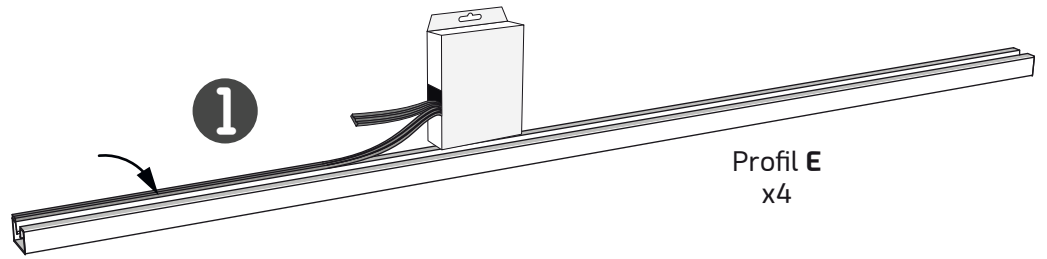
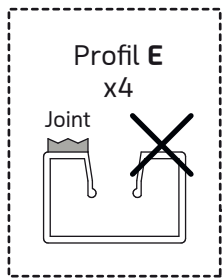


ÉTAPE 8 Installation des profils D

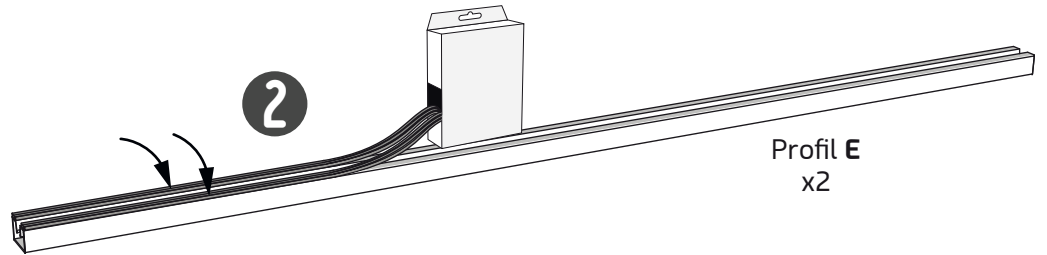
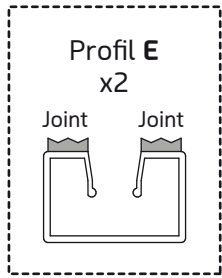


ÉTAPE 9

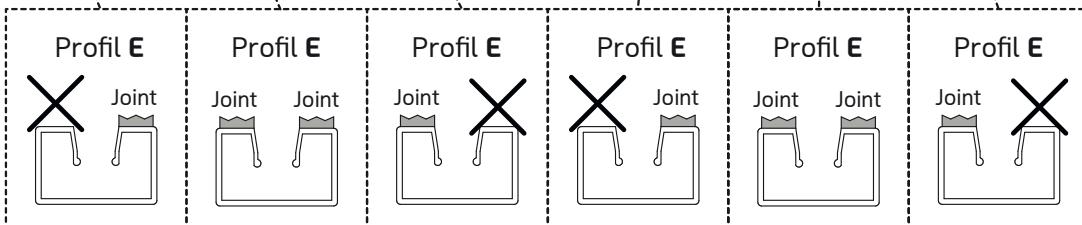
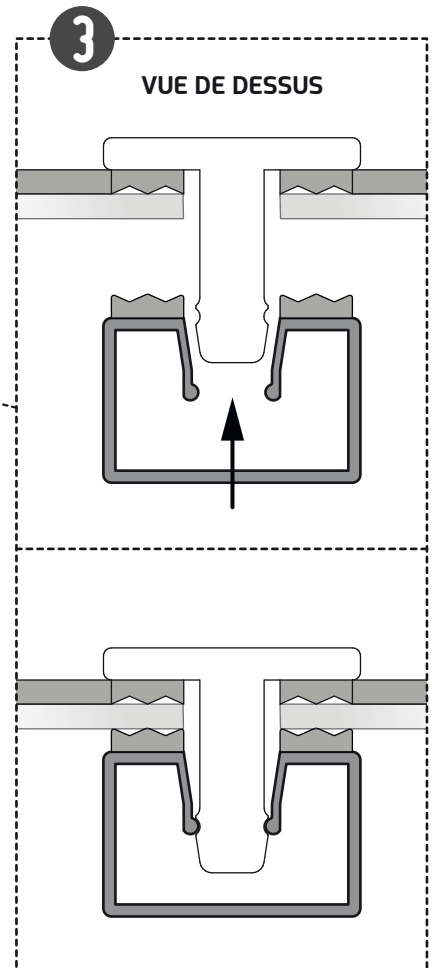
Installation des profils E



Profil E
x4

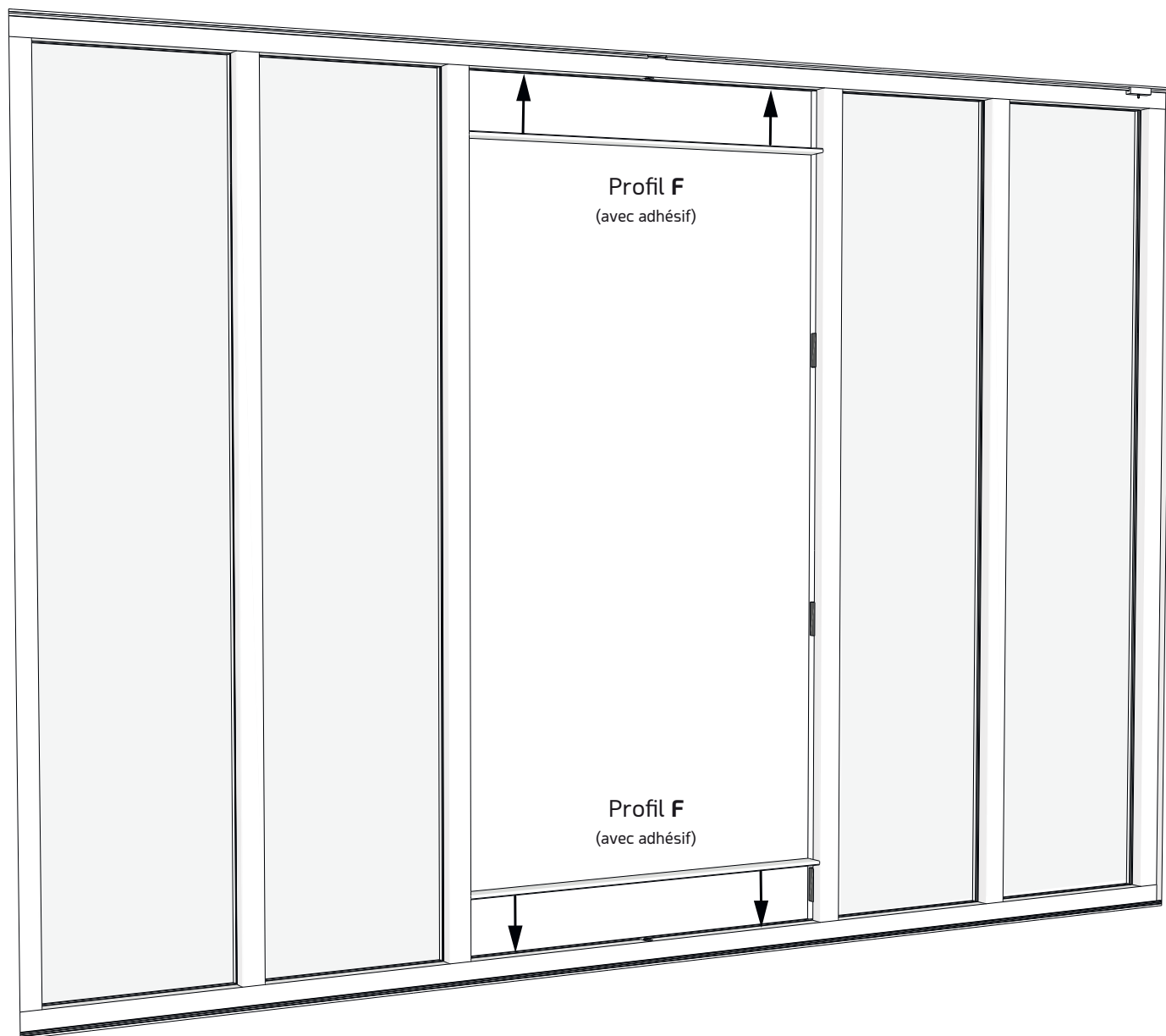


Profil E
x2

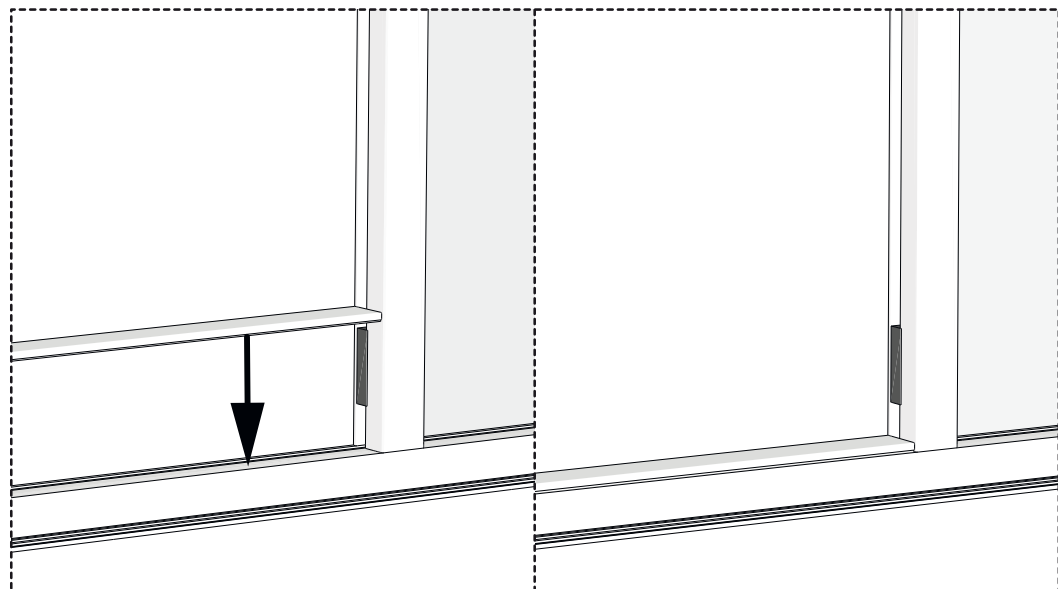
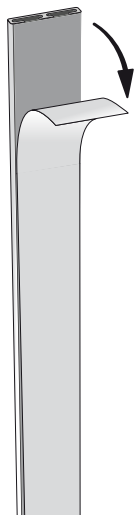


ÉTAPE 10

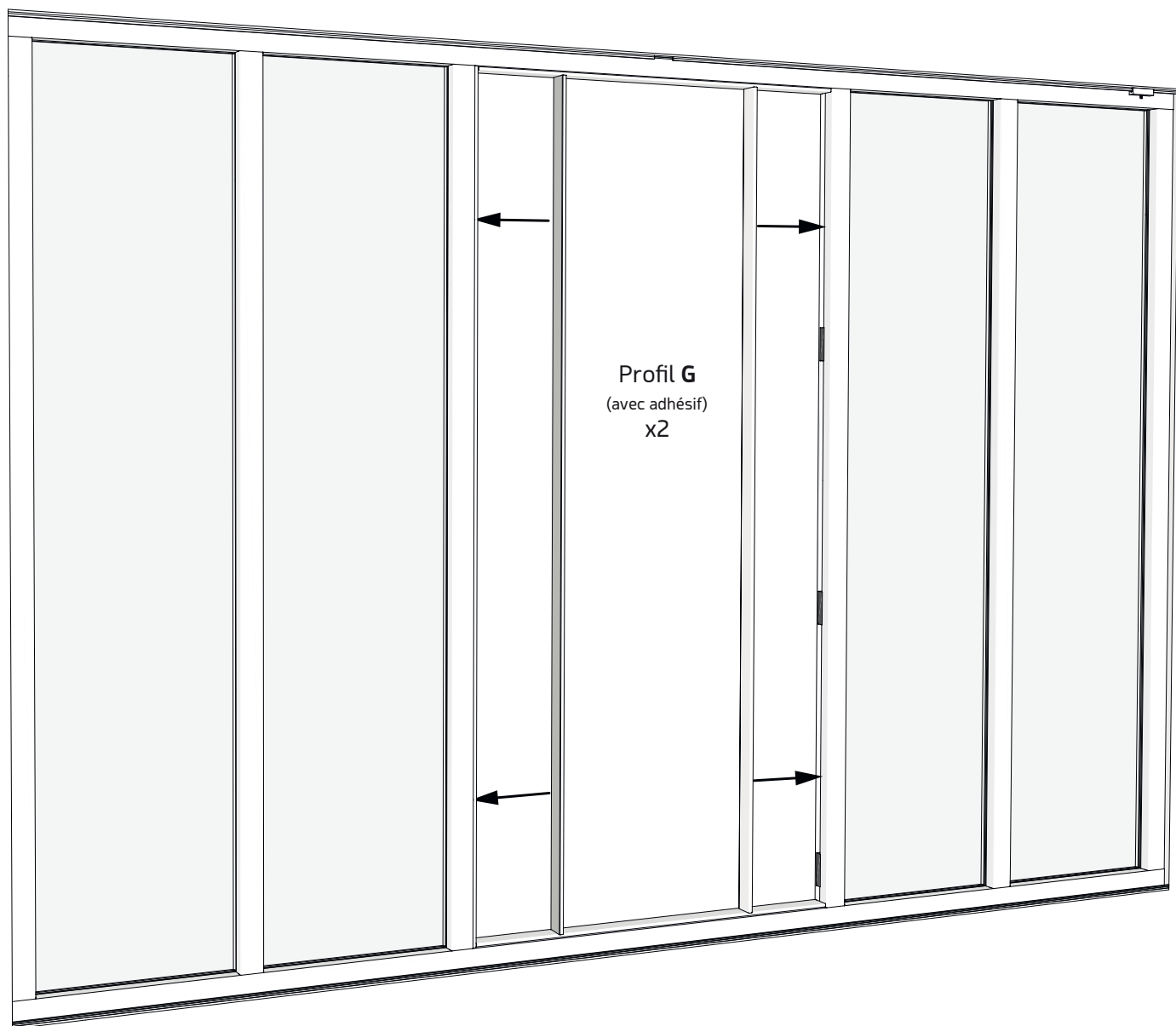
Installation des profils F



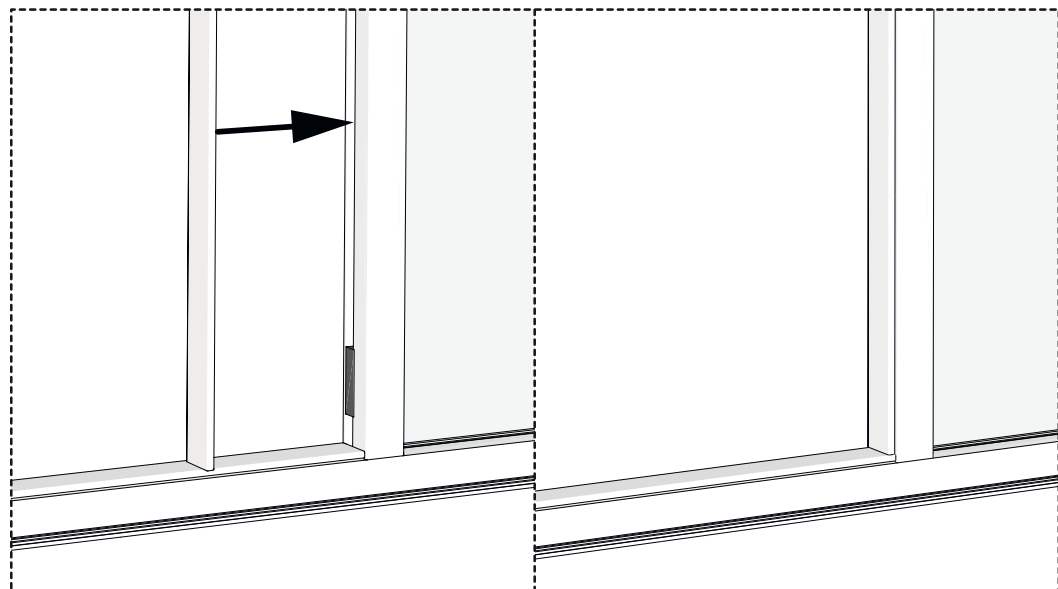
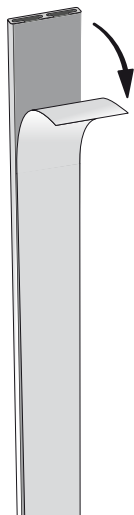
Profil F
(avec adhésif)
x2



ÉTAPE 11 Installation des profils G



Profil G
(avec adhésif)
x2

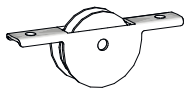


ÉTAPE 12

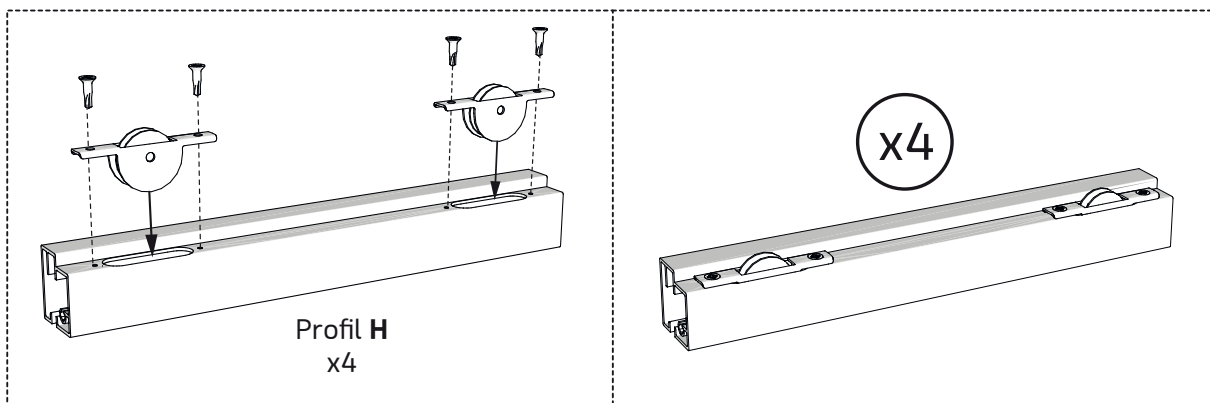
Assemblage des profils H + Roulettes R + vitrage



M
Petite vis
x16

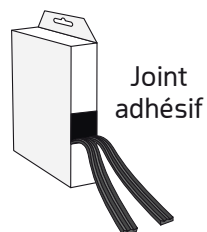


R
Roulette
x8



Vitrage
x2

Roulettes
vers le haut

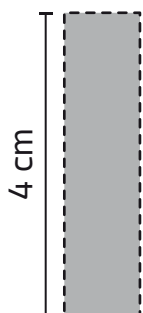


Joint
adhésif



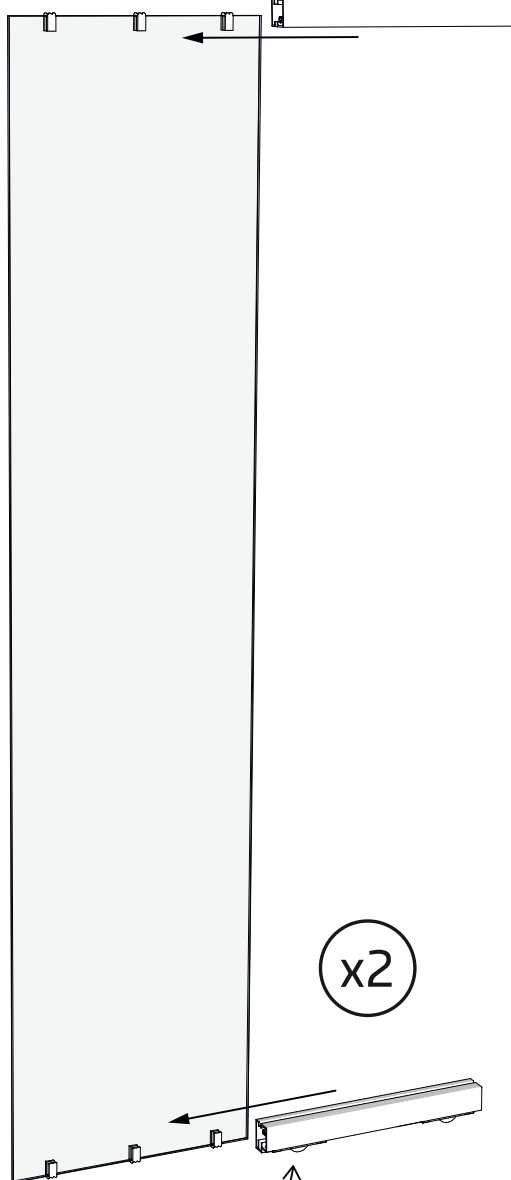
Ciseaux

Gabarit

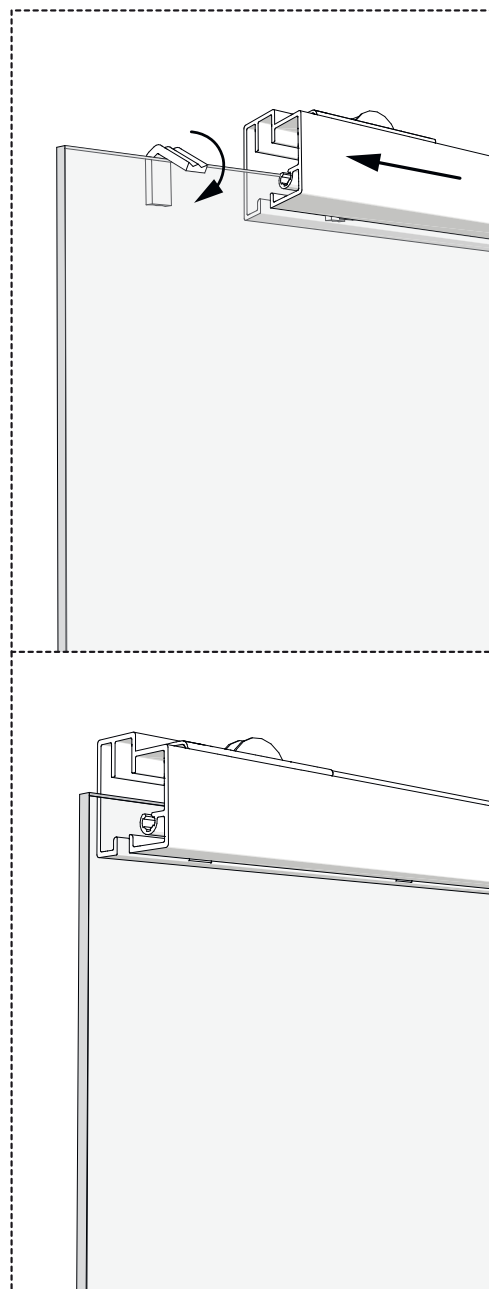


4 cm

Découper et
coller 12 morceaux
de joint adhésif
(6 par vitrage)
de longueur 4 cm.


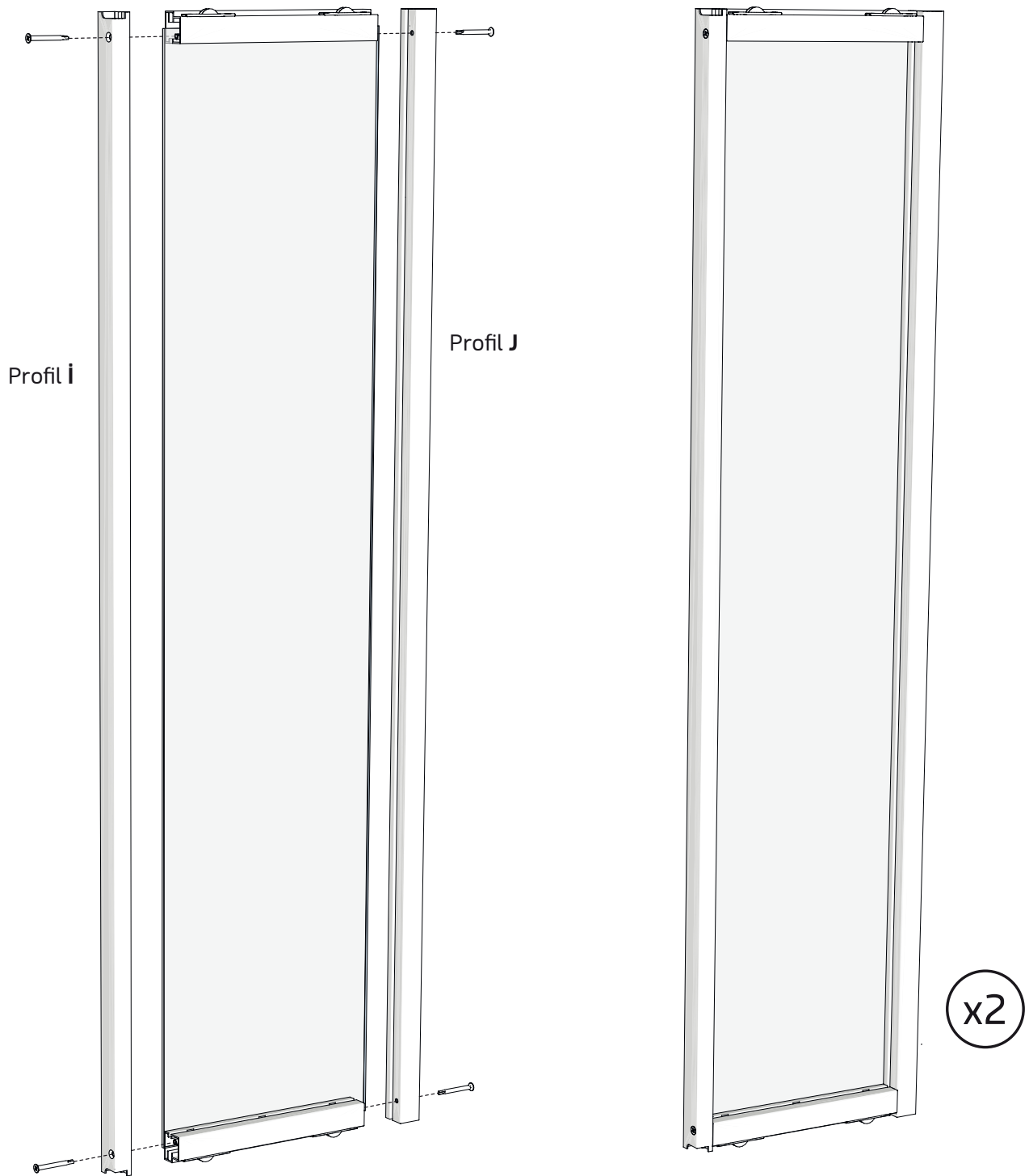


Roulettes
vers le bas

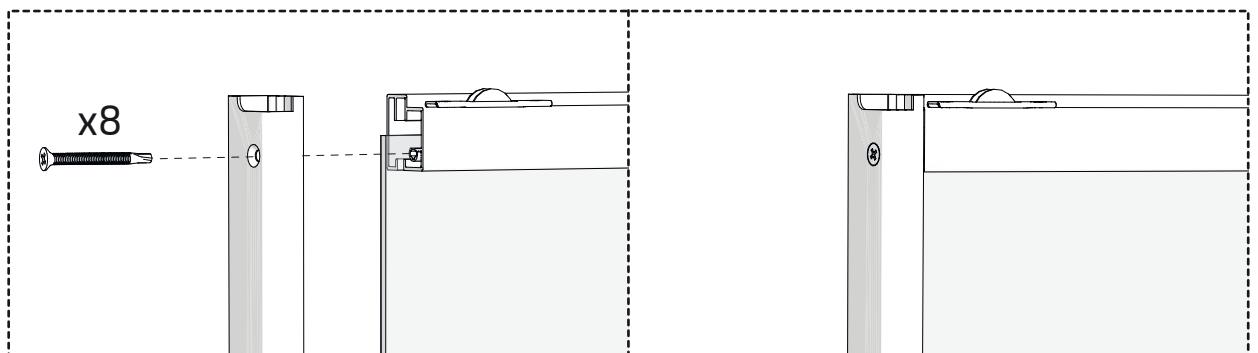


ÉTAPE 13

Assemblage des profils H + profils i + profils J

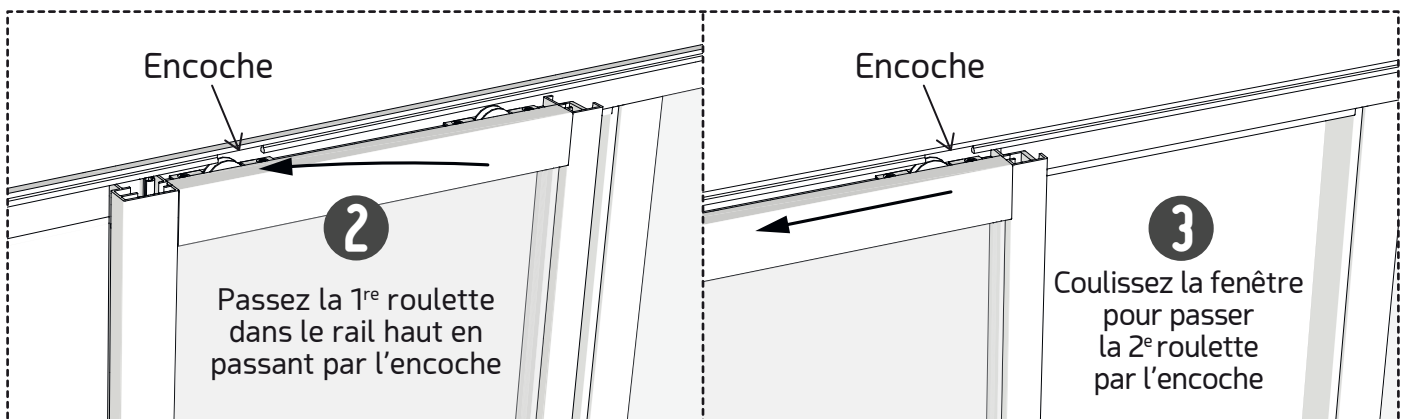
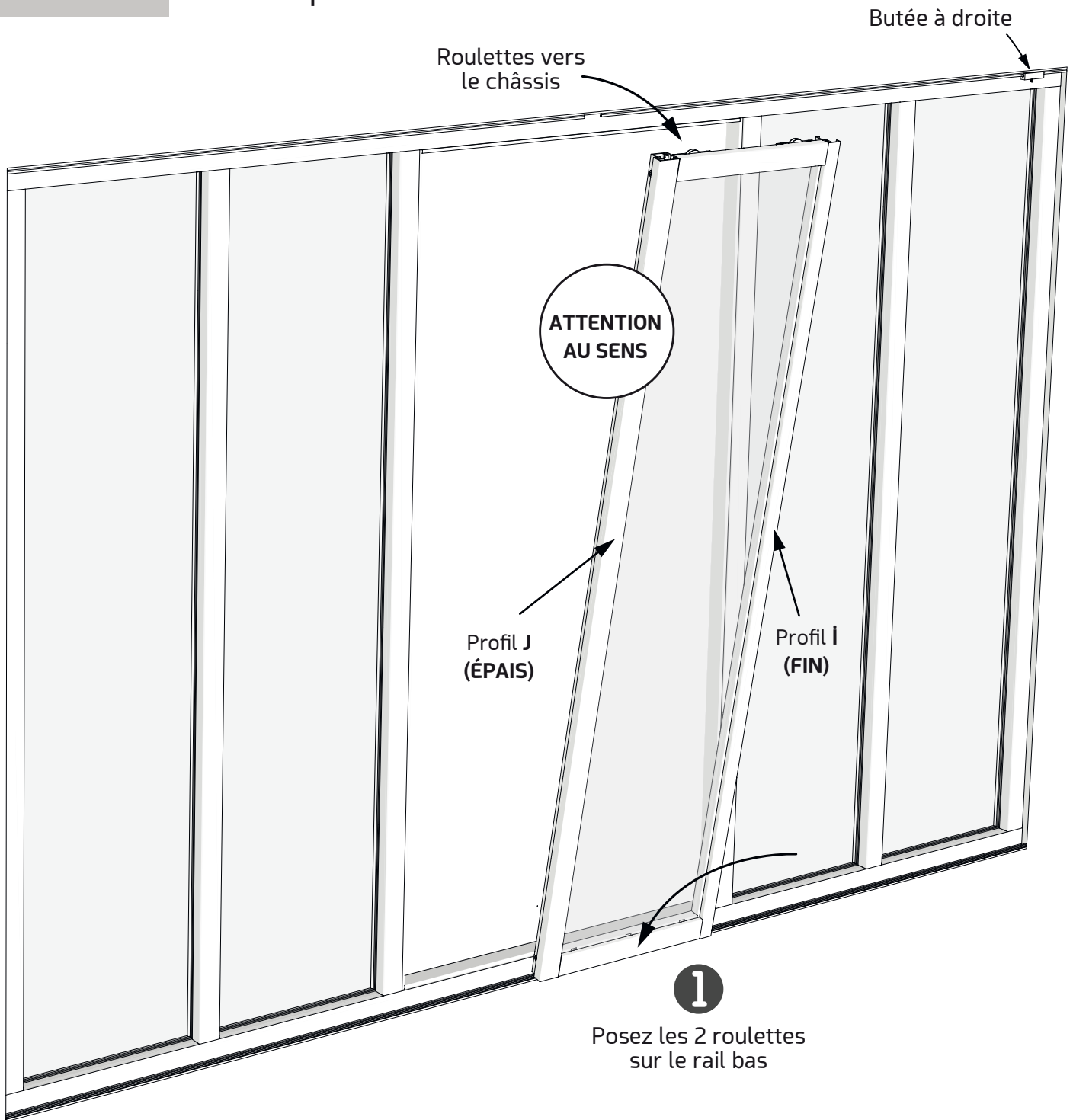


L
Grande vis
x8 (noires)



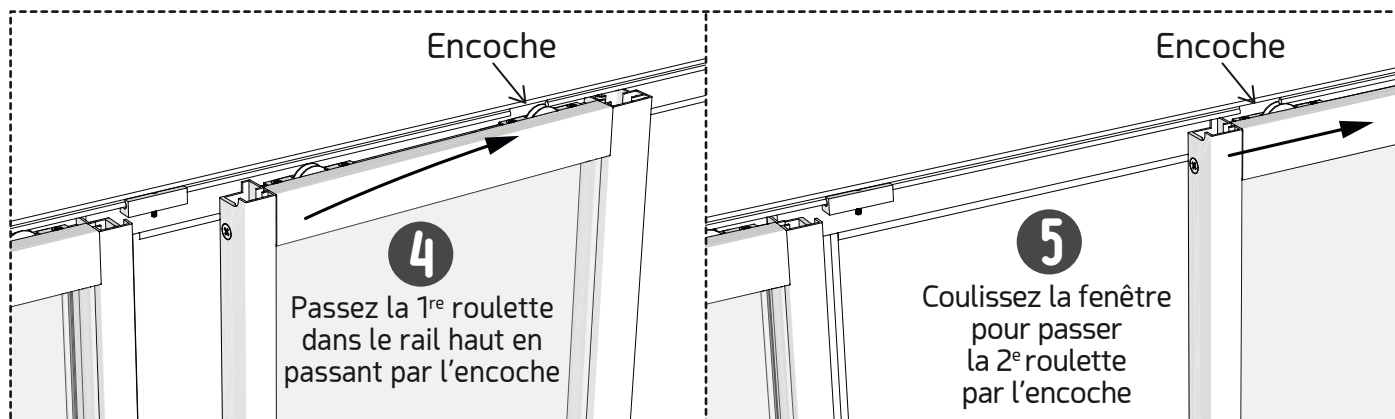
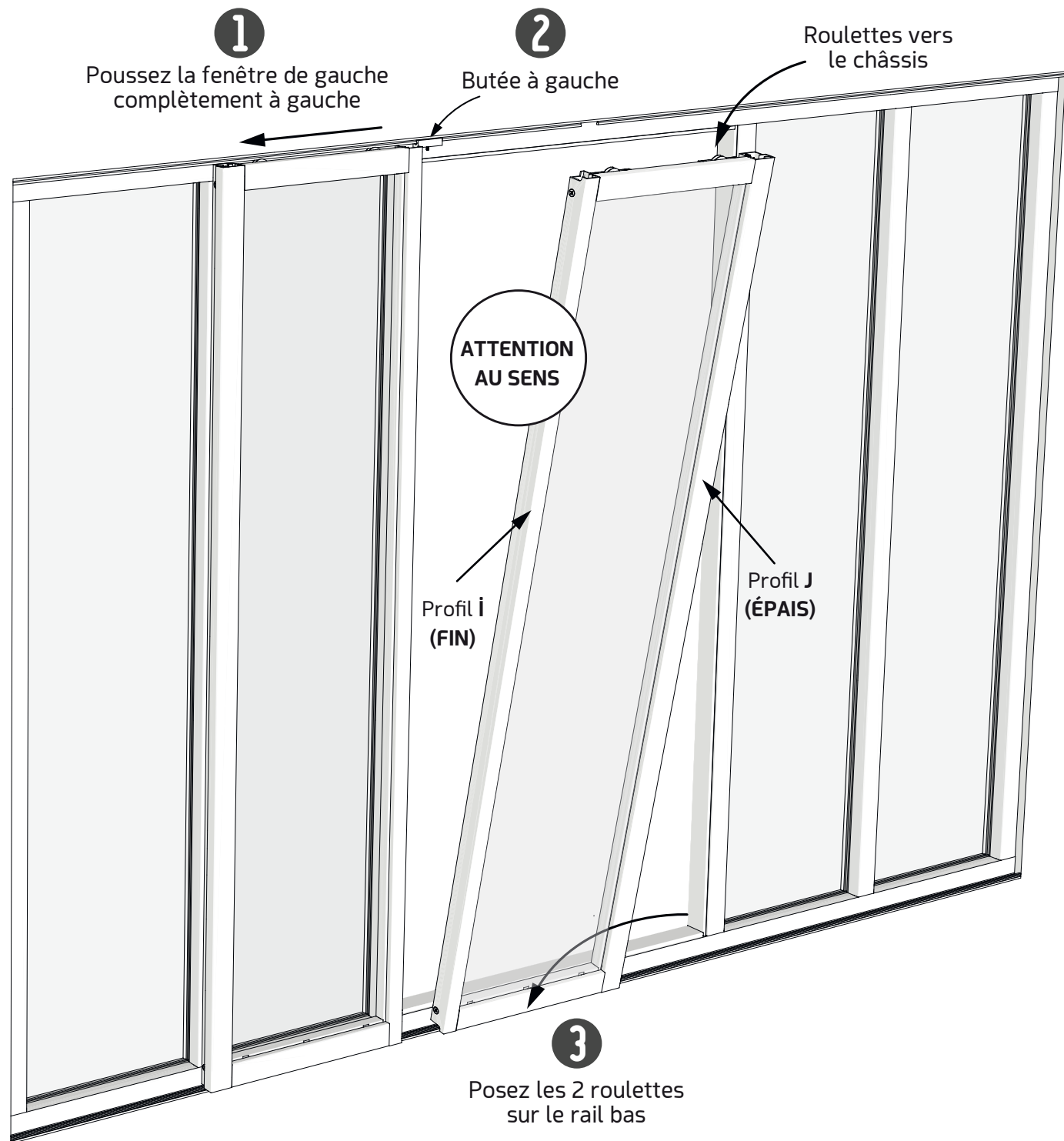
ÉTAPE 14

Mise en place de la FENÊTRE DE GAUCHE



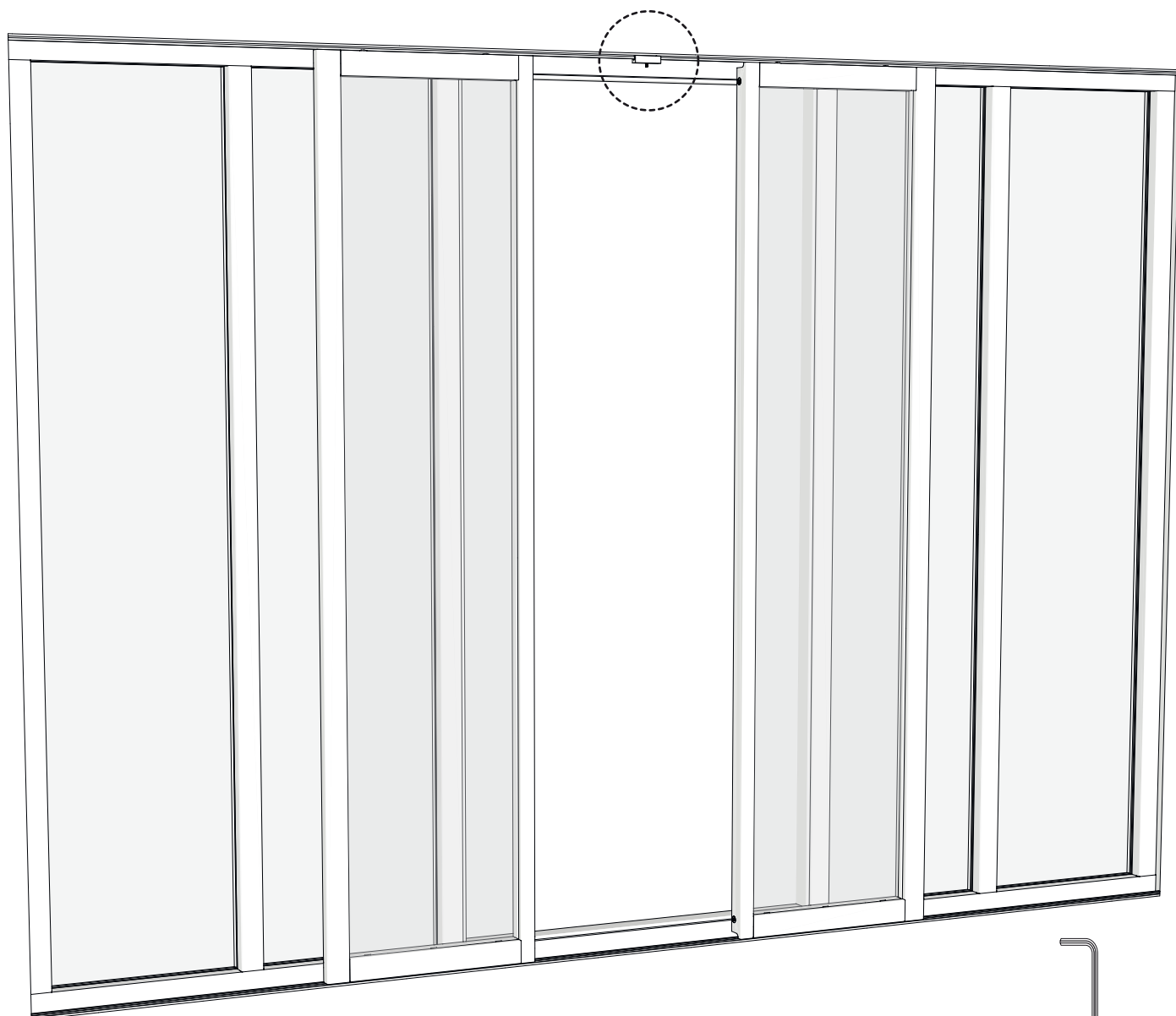
ÉTAPE 15

Mise en place de la FENÊTRE DE DROITE

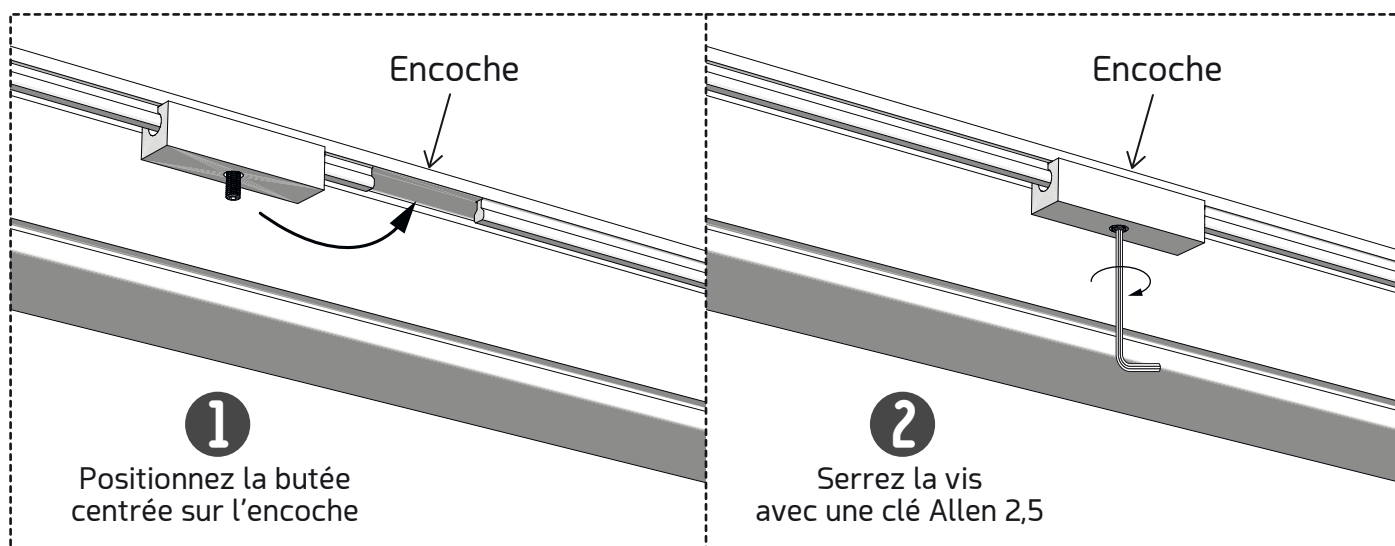


ÉTAPE 16

Mise en place de la butée

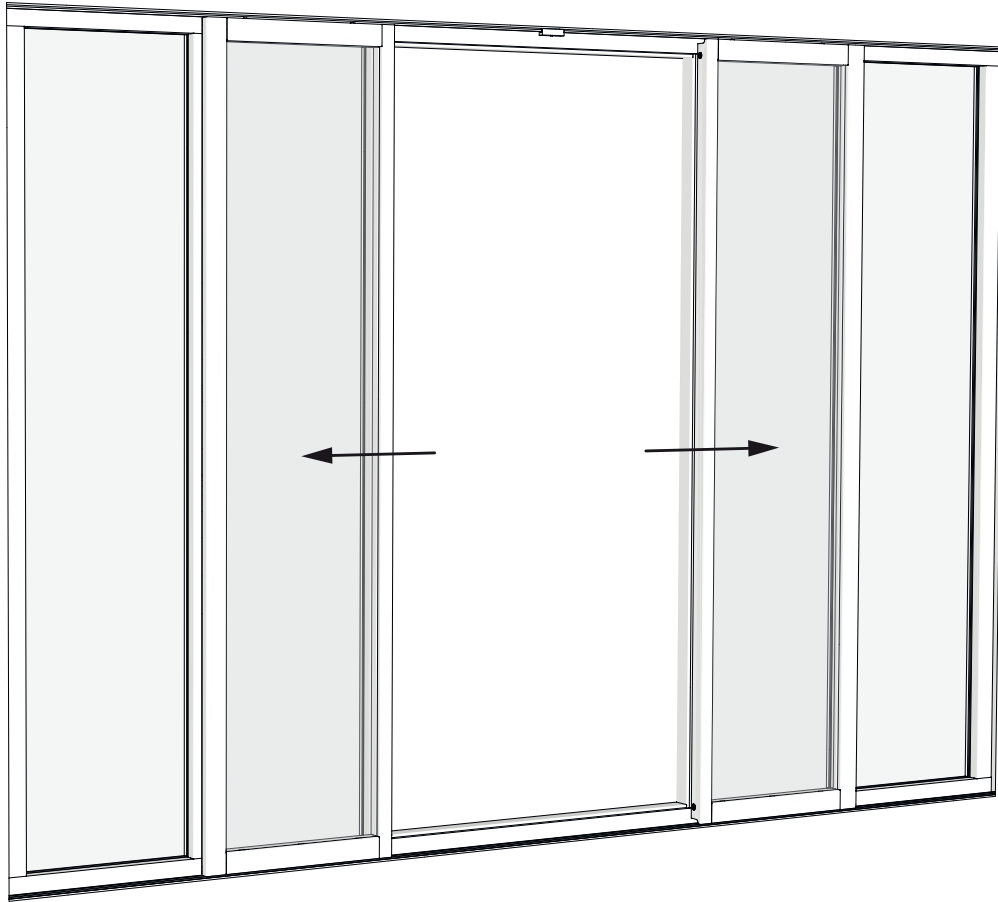


Clé Allen 2,5



Verrière Passe-plat

Verrière avec fenêtre coulissante incluse

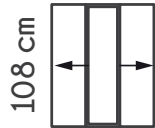


6 modèles disponibles

108 cm
130 cm

×3 Vitrages

93,2 cm



Fenêtre simple

×4 Vitrages

123,2 cm



Fenêtre double

×6 Vitrages

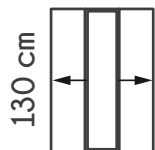
183,2 cm



Fenêtre double

×3 Vitrages

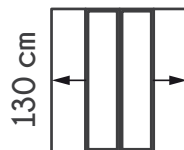
93,2 cm



Fenêtre simple

×4 Vitrages

123,2 cm



Fenêtre double


×6 Vitrages

183,2 cm



Fenêtre double

Fabriqué par : Kit'atelier - Rue du Moulin de Bailly le Bel, 60840 Breuil-le-Sec

 Pour toutes réclamations, contacter le service après-vente au **09 72 62 29 02** • sav@kit-atelier.com