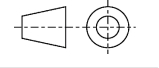


Ref	Component Name	Qty	Dimension
A	CROSS BAR / KIÈNG MÈ NGÒI	2	P018, L394
B	CROSS BAR / KIÈNG LƯNG	1	P018, L432
C	CROSS BAR / THANH SAU MÈ NGÒI	1	P210, L464
D	CROSS BAR / THANH TRƯỚC MÈ NGÒI	1	P210, L515
E	LEG / CHÂN SAU PHẢI	1	P214, L592
F	LEG / CHÂN SAU TRÁI	1	P214, L592
G	LEG / CHÂN TRƯỚC	2	P214, L615
H	SIDE BAR / HÔNG LƯNG	2	P700, L976
I	SUPPORT BAR / THANH ĐỠ TAY VỊN 1	2	P390, L424
J	SUPPORT BAR / THANH ĐỠ TAY VỊN 2	2	P339, L38
K	PLASTIC SLAT / NAN NHỰA	38	25x25x453
L	ARMREST / TAY VỊN	2	15x43x485

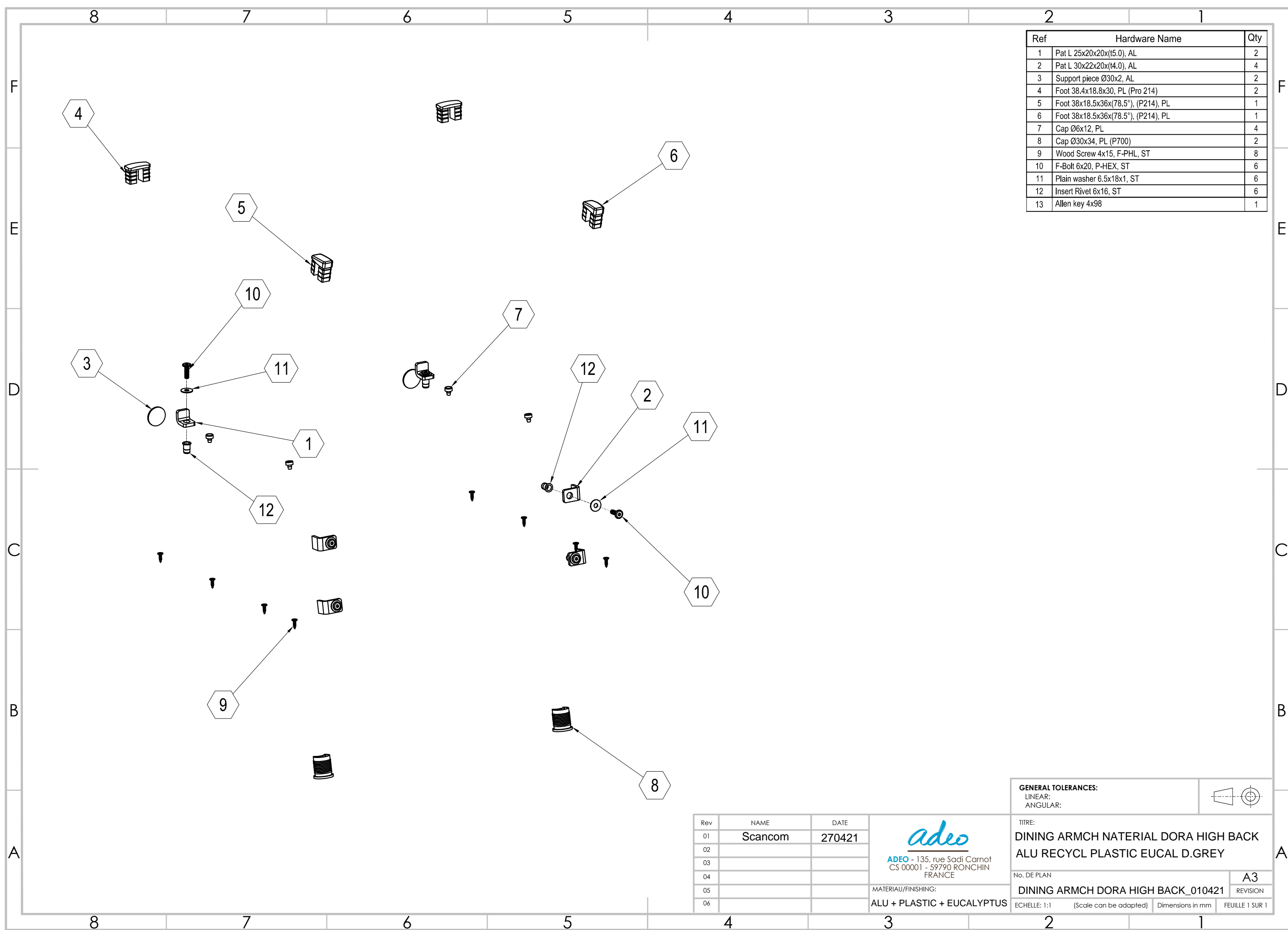
GENERAL TOLERANCES:
 LINEAR:
 ANGULAR:



Rev	NAME	DATE
01	Scancom	270421
02		
03		
04		
05		
06		

adeo
 ADEO - 135, rue Sadi Carnot
 CS 00001 - 59790 RONCHIN
 FRANCE
 MATERIAU/FINISHING:
 ALU + PLASTIC + EUCALYPTUS

TITRE:
**DINING ARMCH MATERIAL DORA HIGH BACK
 ALU RECYCL PLASTIC EUCAL D.GREY**
 No. DE PLAN: **A3**
 REVISION: **DINING ARMCH DORA HIGH BACK_010421**
 ECHELLE: 1:1 (Scale can be adapted) Dimensions in mm FEUILLE 1 SUR 1



Ref	Hardware Name	Qty
1	Pat L 25x20x20x(t5.0), AL	2
2	Pat L 30x22x20x(t4.0), AL	4
3	Support piece Ø30x2, AL	2
4	Foot 38.4x18.8x30, PL (Pro 214)	2
5	Foot 38x18.5x36x(78.5°), (P214), PL	1
6	Foot 38x18.5x36x(78.5°), (P214), PL	1
7	Cap Ø6x12, PL	4
8	Cap Ø30x34, PL (P700)	2
9	Wood Screw 4x15, F-PHL, ST	8
10	F-Bolt 6x20, P-HEX, ST	6
11	Plain washer 6.5x18x1, ST	6
12	Insert Rivet 6x16, ST	6
13	Allen key 4x98	1

Rev	NAME	DATE
01	Scancom	270421
02		
03		
04		
05		
06		

adeo
 ADEO - 135, rue Sadi Carnot
 CS 00001 - 59790 RONCHIN
 FRANCE

MATERIAU/FINISHING:
 ALU + PLASTIC + EUCALYPTUS

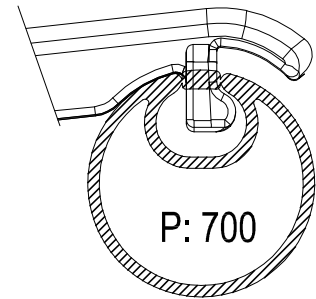
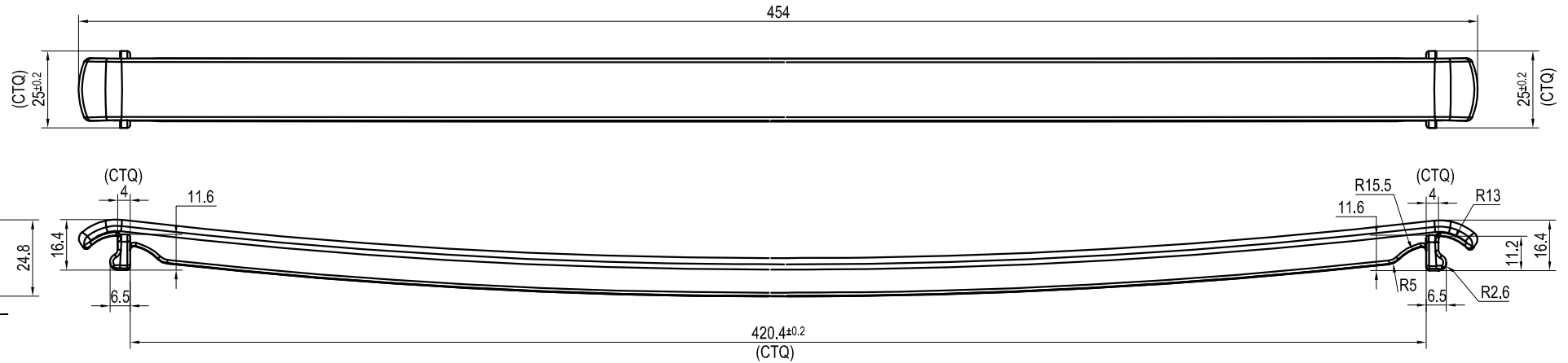
GENERAL TOLERANCES:
 LINEAR:
 ANGULAR:

TITRE:
 DINING ARMCH MATERIAL DORA HIGH BACK
 ALU RECYCL PLASTIC EUCAL D.GREY

No. DE PLAN: **A3**

DINING ARMCH DORA HIGH BACK_010421 REVISION

ECHELLE: 1:1 (Scale can be adapted) Dimensions in mm FEUILLE 1 SUR 1



GENERAL TOLERANCES.
 Components: According to SS-ISO-2768-1M.
 Table: Linear measures (Values in mm)

Tolerance class		Permissible deviations for basic size range							
Designation	Description	0.5 up to 3	Over 3 up to 6	Over 6 up to 30	Over 30 up to 120	Over 120 up to 400	Over 400 up to 1 000	Over 1 000 up to 2 000	Over 2 000 up to 4 000
F	Fine	± 0.05	± 0.05	± 0.1	± 0.15	± 0.2	± 0.3	± 0.5	-
M	Medium	± 0.1	± 0.1	± 0.2	± 0.3	± 0.5	± 0.8	± 1.2	± 2
C	Coarse	± 0.1	± 0.3	± 0.5	± 0.8	± 1.2	± 2	± 3	± 4

Note: Dimensions don't show tolerance then which applied according to SS-ISO-2768 -1 M. (See table)

© Copyright Notice:

"This Drawing is copyright protected and is the property of Scancom International A/S. The drawing may not be reproduced or copied without written approval from Scancom International A/S. All rights reserved Scancom International A/S 2005. Violations will be prosecuted."



**ScanCom
International**

Component name / Tên sản phẩm:		Drawn by	Scale	Approved	Revision	V6
Back Plastic Slat 25x25x454, PL		LVD	1:2	LTD	Date: 23 Oct 20	
Material / Vật liệu:		Drawing code:		Component code:		
PDO, Plastic		PN69020C		C-P-SC-BR-0002		