

INDOOR UNIT

No. OBB849

PARTS CATALOG

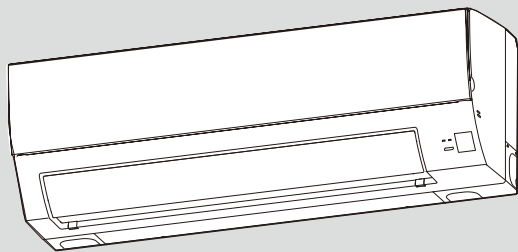
Models

MSZ-BT20VG - E1, ET1

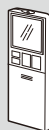
MSZ-BT25VG - E1, ET1

MSZ-BT35VG - E1, ET1

MSZ-BT50VG - E1, ET1



MSZ-BT25VG



CONTENTS

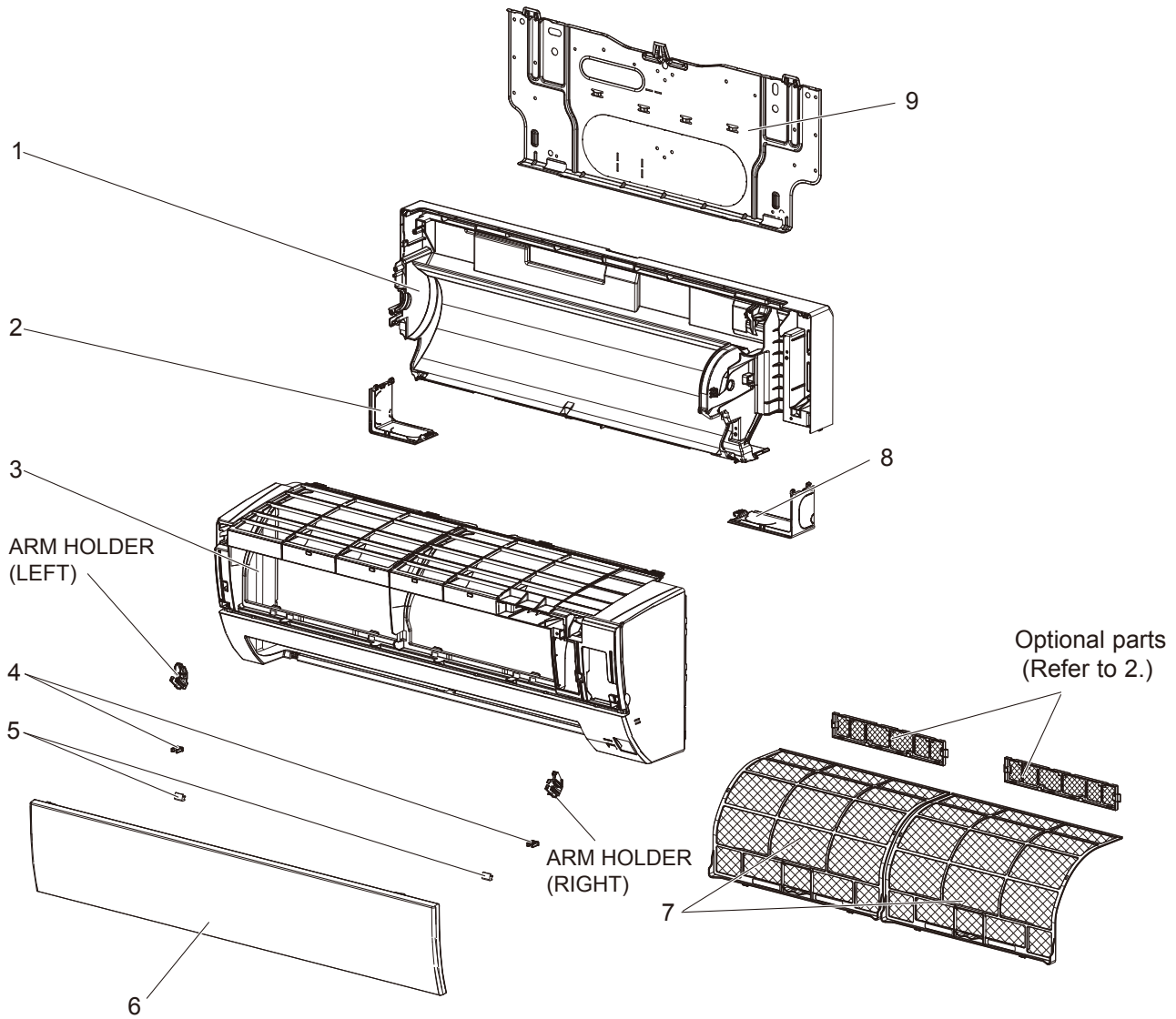
- 1. SERVICE PARTS LIST..... 2
- 2. OPTIONAL PARTS..... 6

SERVICE MANUAL (OBH849)

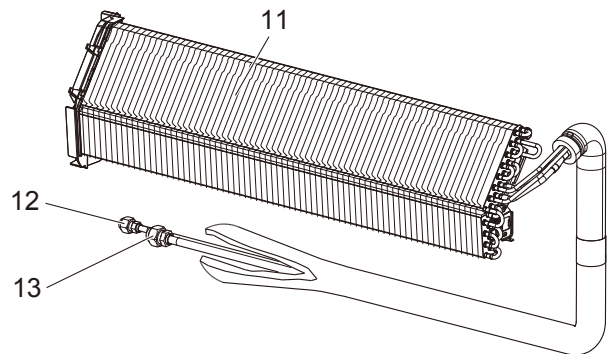
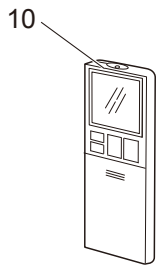
1

SERVICE PARTS LIST

MSZ-BT20VG MSZ-BT25VG MSZ-BT35VG MSZ-BT50VG
1-1. INDOOR UNIT STRUCTURAL PARTS



1-2. ACCESSORY AND REMOTE CONTROLLER 1-3. INDOOR UNIT HEAT EXCHANGER





1-1. INDOOR UNIT STRUCTURAL PARTS

No.	Part No.	Part name	Symbol in Wiring Diagram	MODEL Q'TY/UNIT								Remarks
				MSZ-BT20VG-[E1]	MSZ-BT20VG-[ET1]	MSZ-BT25VG-[E1]	MSZ-BT25VG-[ET1]	MSZ-BT35VG-[E1]	MSZ-BT35VG-[ET1]	MSZ-BT50VG-[E1]	MSZ-BT50VG-[ET1]	
1	E22 26K 234	BOX ASSEMBLY		1	1	1	1	1	1	1	1	
2	E22 94B 976	CORNER BOX L		1	1	1	1	1	1	1	1	
3	E22 26K 000	PANEL ASSEMBLY		1	1	1	1	1	1	1	1	Includes 5,6, and 7
4	E22 F95 142	CATCH		2	2	2	2	2	2	2	2	2pcs/set
5	E22 94B 067	SCREW CAP		2	2	2	2	2	2	2	2	2pcs/set
6	E22 26K 010	FRONT PANEL		1	1	1	1	1	1	1	1	
7	E22 26K 100	AIR FILTER		2	2	2	2	2	2	2	2	1 PC/Set
8	E22 94B 975	CORNER BOX R		1	1	1	1	1	1	1	1	
9	E22 94B 970	INSTALLATION PLATE		1	1	1	1	1	1	1	1	

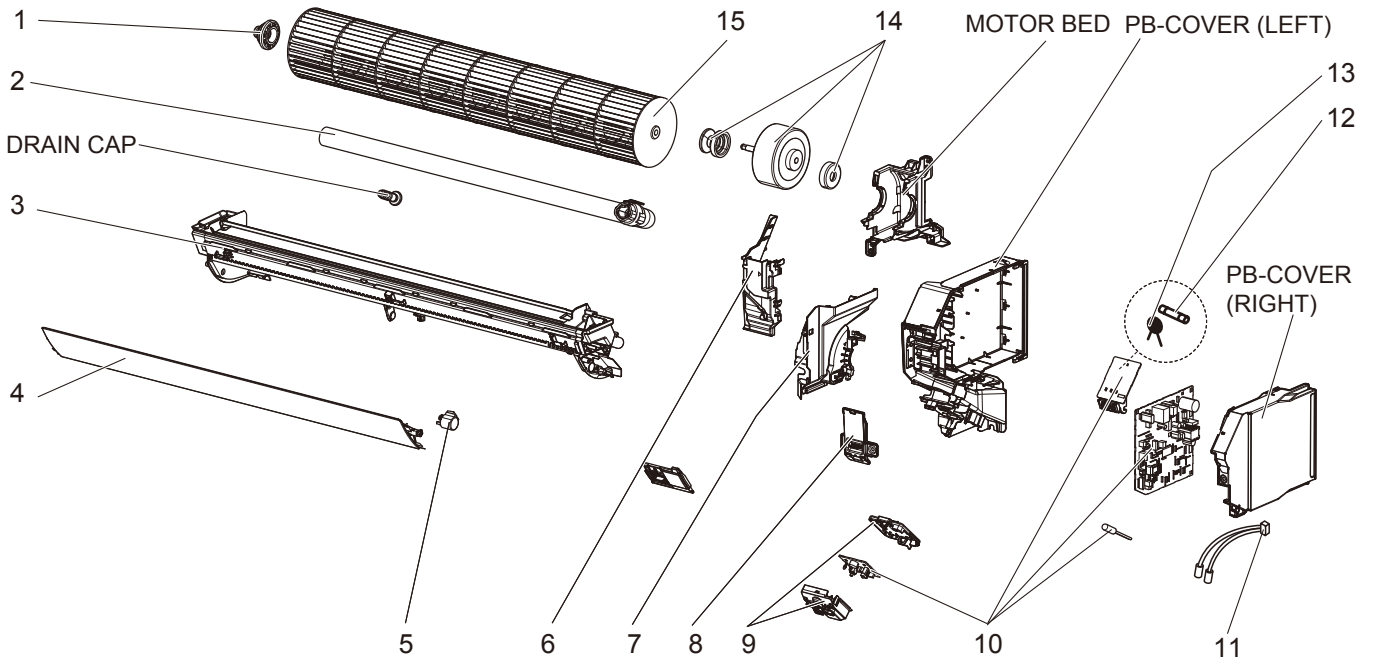
1-2. ACCESSORY AND REMOTE CONTROLLER

No.	Part No.	Part name	Symbol in Wiring Diagram	MODEL Q'TY/UNIT								Remarks
				MSZ-BT20VG-[E1]	MSZ-BT20VG-[ET1]	MSZ-BT25VG-[E1]	MSZ-BT25VG-[ET1]	MSZ-BT35VG-[E1]	MSZ-BT35VG-[ET1]	MSZ-BT50VG-[E1]	MSZ-BT50VG-[ET1]	
10	E22 26K 426	REMOTE CONTROLLER		1	1	1	1	1	1	1	1	ZH19A

1-3. INDOOR UNIT HEAT EXCHANGER

No.	Part No.	Part name	Symbol in Wiring Diagram	MODEL Q'TY/UNIT								Remarks
				MSZ-BT20VG-[E1]	MSZ-BT20VG-[ET1]	MSZ-BT25VG-[E1]	MSZ-BT25VG-[ET1]	MSZ-BT35VG-[E1]	MSZ-BT35VG-[ET1]	MSZ-BT50VG-[E1]	MSZ-BT50VG-[ET1]	
11	E22 26K 620	INDOOR HEAT EXCHANGER		1	1	1	1	1	1			
11	E22 29K 620	INDOOR HEAT EXCHANGER								1	1	
12	E22 151 667	UNION(LIQ)		1	1	1	1	1	1	1	1	ø6.35
13	E22 151 666	UNION(GAS)		1	1	1	1	1	1			ø9.52
13	E22 155 666	UNION(GAS)								1	1	ø12.7

MSZ-BT20VG MSZ-BT25VG MSZ-BT35VG MSZ-BT50VG
1-4. INDOOR UNIT ELECTRICAL PARTS AND FUNCTIONAL PARTS



1-4. INDOOR UNIT ELECTRICAL PARTS AND FUNCTIONAL PARTS

No.	Part No.	Part name	Symbol in Wiring Diagram	MODEL Q'TY/UNIT								Remarks
				MSZ-BT20VG-E1	MSZ-BT20VG-ET1	MSZ-BT25VG-E1	MSZ-BT25VG-ET1	MSZ-BT35VG-E1	MSZ-BT35VG-ET1	MSZ-BT50VG-E1	MSZ-BT50VG-ET1	
1	E22 751 509	BEARING MOUNT		1	1	1	1	1	1	1	1	
2	E22 P72 702	DRAIN HOSE		1	1	1	1	1	1	1	1	
3	E22 26K 235	NOZZLE ASSEMBLY		1	1	1	1	1	1	1	1	Full assembly except drain hose
4	E22 26K 040	HORIZONTAL VANE		1	1	1	1	1	1	1	1	
5	E22 A89 303	VANE MOTOR	MV	1	1	1	1	1	1	1	1	
6	E22 26K 541	WATER COVER		1	1	1	1	1	1	1	1	
7	E22 26K 333	MOTOR BAND		1	1	1	1	1	1	1	1	
8	E22 94B 784	V.A. CLAMP		1	1	1	1	1	1	1	1	
9	E22 94B 095	DISPLAY RECEIVER P.C. BOARD HOLDER		1	1	1	1	1	1	1	1	
10	E22 26K 452	CONTROL P.C. BOARD		1	1							Includes terminal P.C. board with terminal block attached, power monitor receiver SW P.C. board and RT11
10	E22 27K 452	CONTROL P.C. BOARD				1	1					Includes terminal P.C. board with terminal block attached, power monitor receiver SW P.C. board and RT11
10	E22 28K 452	CONTROL P.C. BOARD						1	1			Includes terminal P.C. board with terminal block attached, power monitor receiver SW P.C. board and RT11
10	E22 29K 452	CONTROL P.C. BOARD								1	1	Includes terminal P.C. board with terminal block attached, power monitor receiver SW P.C. board and RT11
11	E22 26K 307	INDOOR COIL THERMISTOR	RT12,RT13	1	1	1	1	1	1			
11	E22 29K 307	INDOOR COIL THERMISTOR	RT12,RT13							1	1	
12	E22 42J 382	FUSE	F11	1	1	1	1	1	1	1	1	T3.15AL250V
13	E22 K90 385	VARISTOR	NR11	1	1	1	1	1	1	1	1	
14	E22 29A 300	INDOOR FAN MOTOR	MF	1	1	1	1	1	1	1	1	RC0J30-□□, Includes rubber mounts
15	E22 J98 302	LINE FLOW FAN		1	1	1	1	1	1	1	1	

2-1. AIR CLEANING FILTER (SILVER-IONIZED AIR PURIFIER FILTER)

Model	Part No.
MSZ-BT20VG MSZ-BT25VG MSZ-BT35VG MSZ-BT50VG	MAC-2370FT-E

Every 3 months:

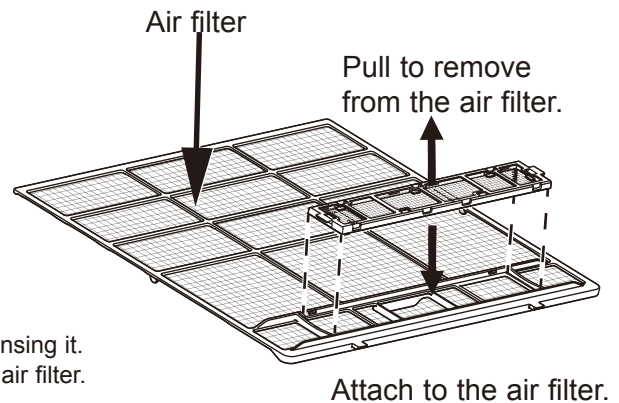
- Remove dirt by a vacuum cleaner.

When dirt cannot be removed by vacuum cleaning:

- Soak the filter and its frame in lukewarm water before rinsing it.
- After washing, dry it well in shade. Install all tabs of the air filter.

Every year:

- Replace it with a new air cleaning filter for best performance.



MITSUBISHI ELECTRIC CORPORATION

HEAD OFFICE: TOKYO BUILDING, 2-7-3, MARUNOUCHI, CHIYODA-KU, TOKYO 100-8310, JAPAN