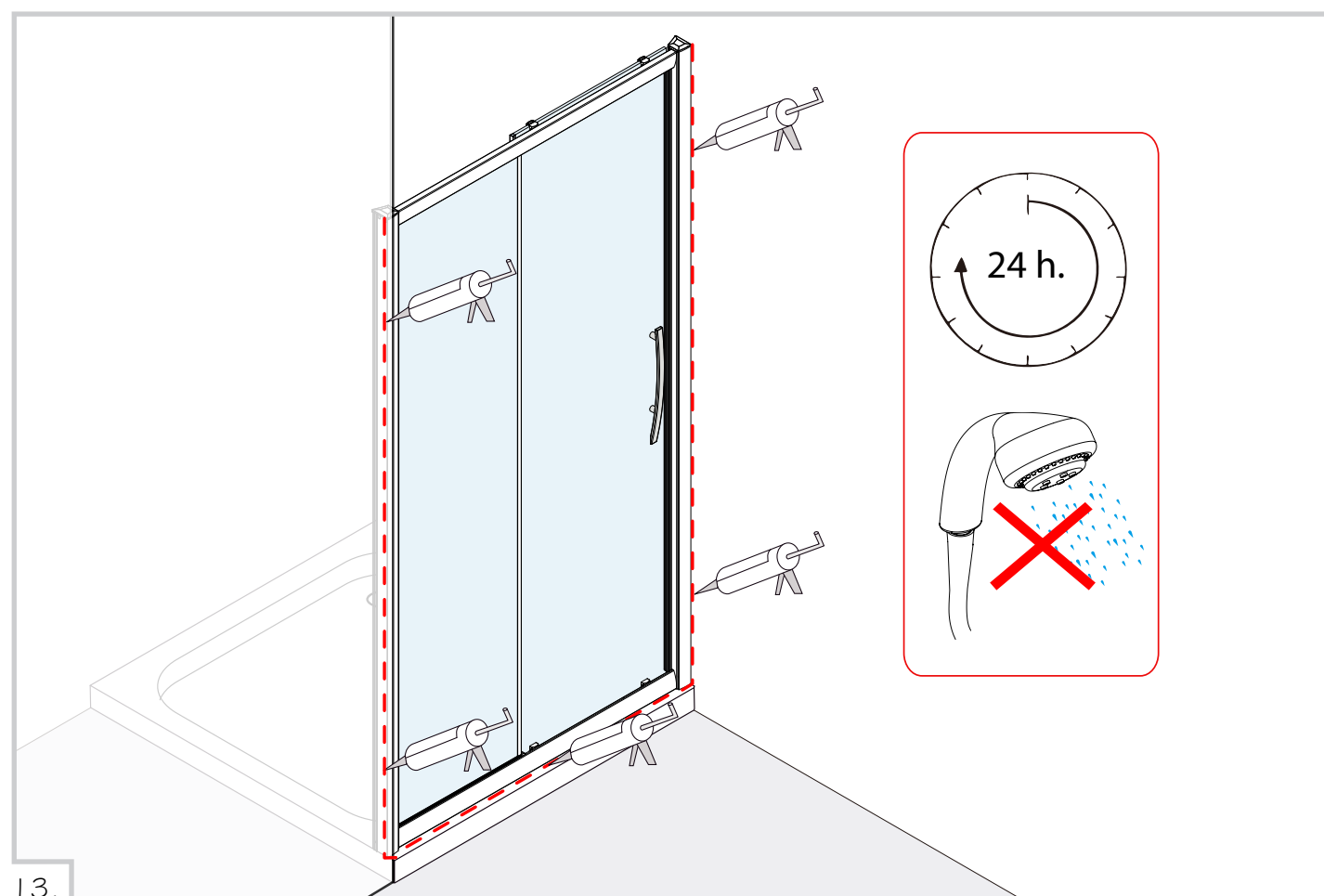


12.



13.

Flair Showers Ltd., Rocks Road, Kingscourt, Co. Cavan, Ireland

Sales Office Direct Telephone: +353 42 966 8000

Where a shower enclosure has been installed contrary to these instructions Flair Showers Ltd cannot accept liability for any consequential loss or damage.

[www.flairshowers.com](http://www.flairshowers.com)



# NaMara flair

**SLIDE AWAY**



Thank you for choosing a Flair product




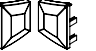







Flair Showers Ltd. is EN ISO 9001:2008 certified

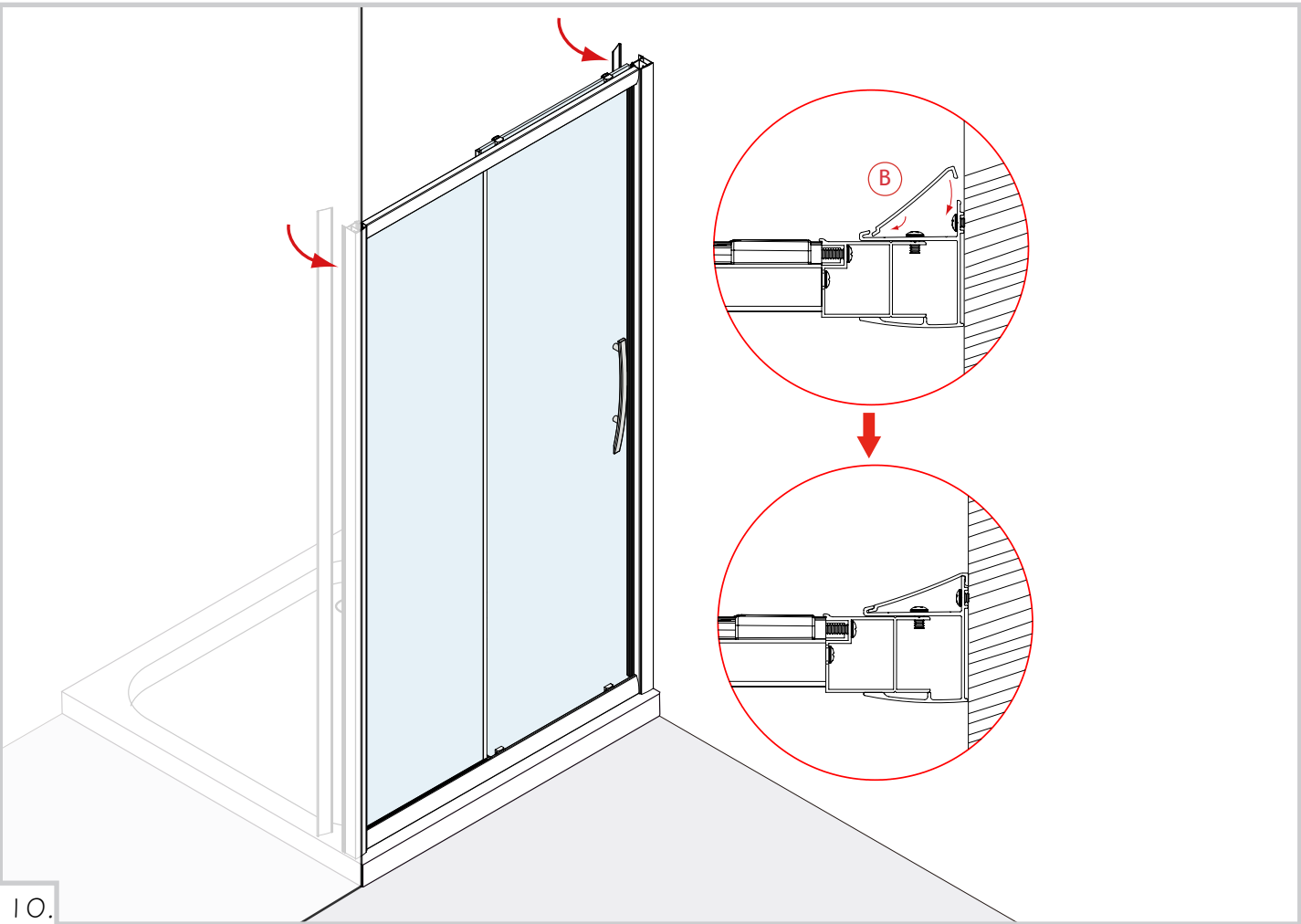
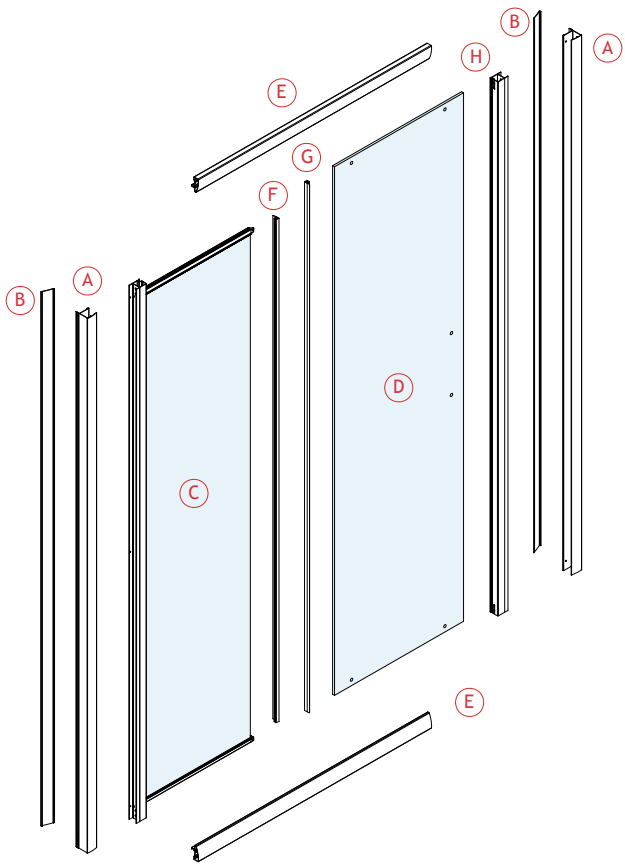
This product is fully compliant with EN 14428 (European Standard for Functional Requirements and Test Methods for Shower Enclosures)

**BEFORE YOU INSTALL YOUR SHOWER ENCLOSURE PLEASE READ ALL INSTRUCTIONS. FAILURE TO DO SO MAY LEAD TO INVALIDATION OF YOUR WARRANTY.**

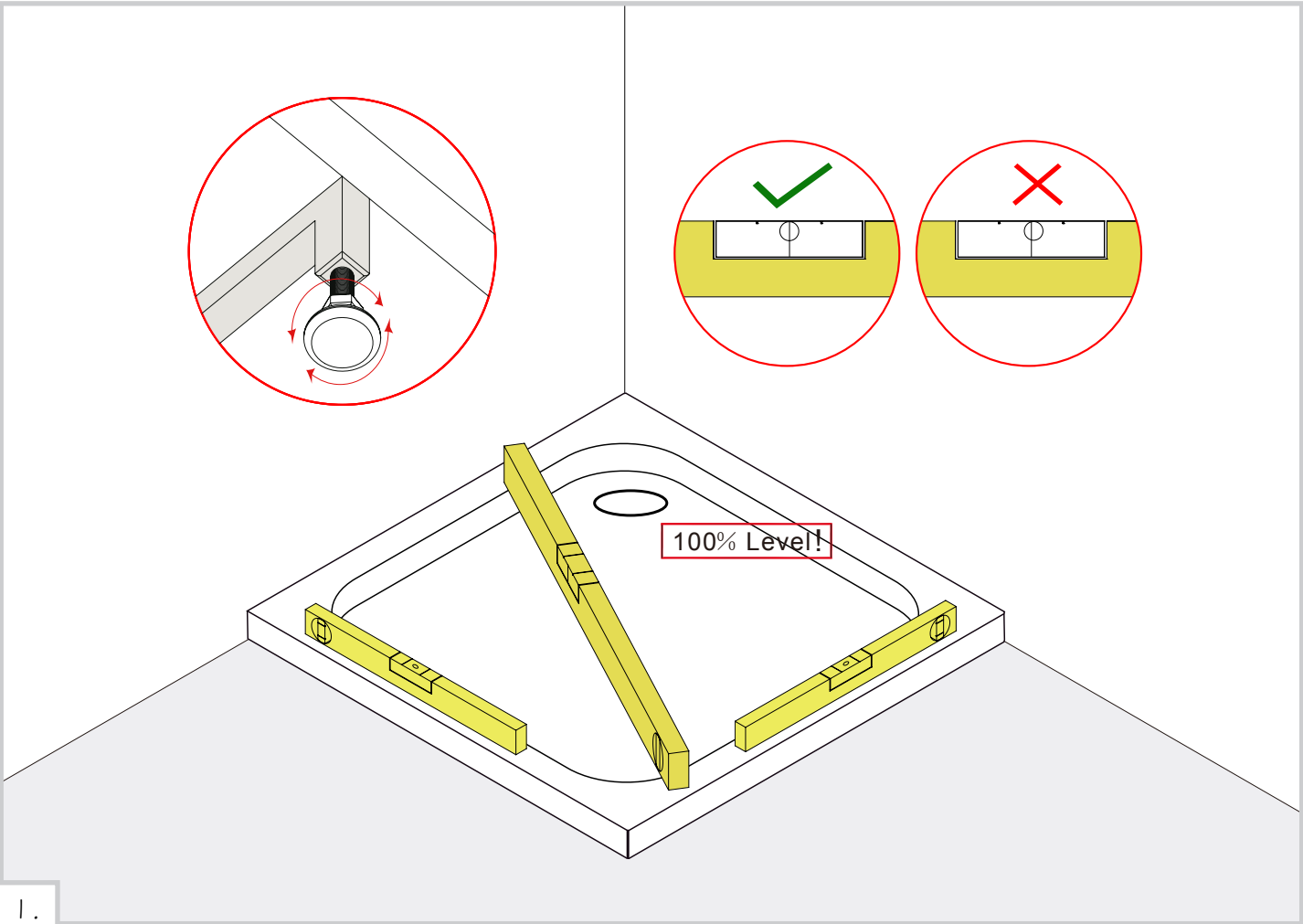
- The shower tray **MUST** be fitted level, tiled in and sealed along its entire wall length.
- Glass door edges are vulnerable. Contact with hard surfaces may result in glass breakage.
- The shower enclosure should be sealed only on the outside using silicone sealant.
- Check walls for electrical cabling or water pipes before drilling.

NaMara  
Installation Instructions

ITEM		Quant.
(F)		1 Pc
(G)		1 Pc
(I)		1 Pc
(J)		1+1 Pc
(K)		1+1 Pc
(L)		2 Pc
(M)		2 Pc
(N)	 4X40	6 Pc
(O)		6 Pc
(P)	 4X8	8 Pc
(Q)		1+1 Pc

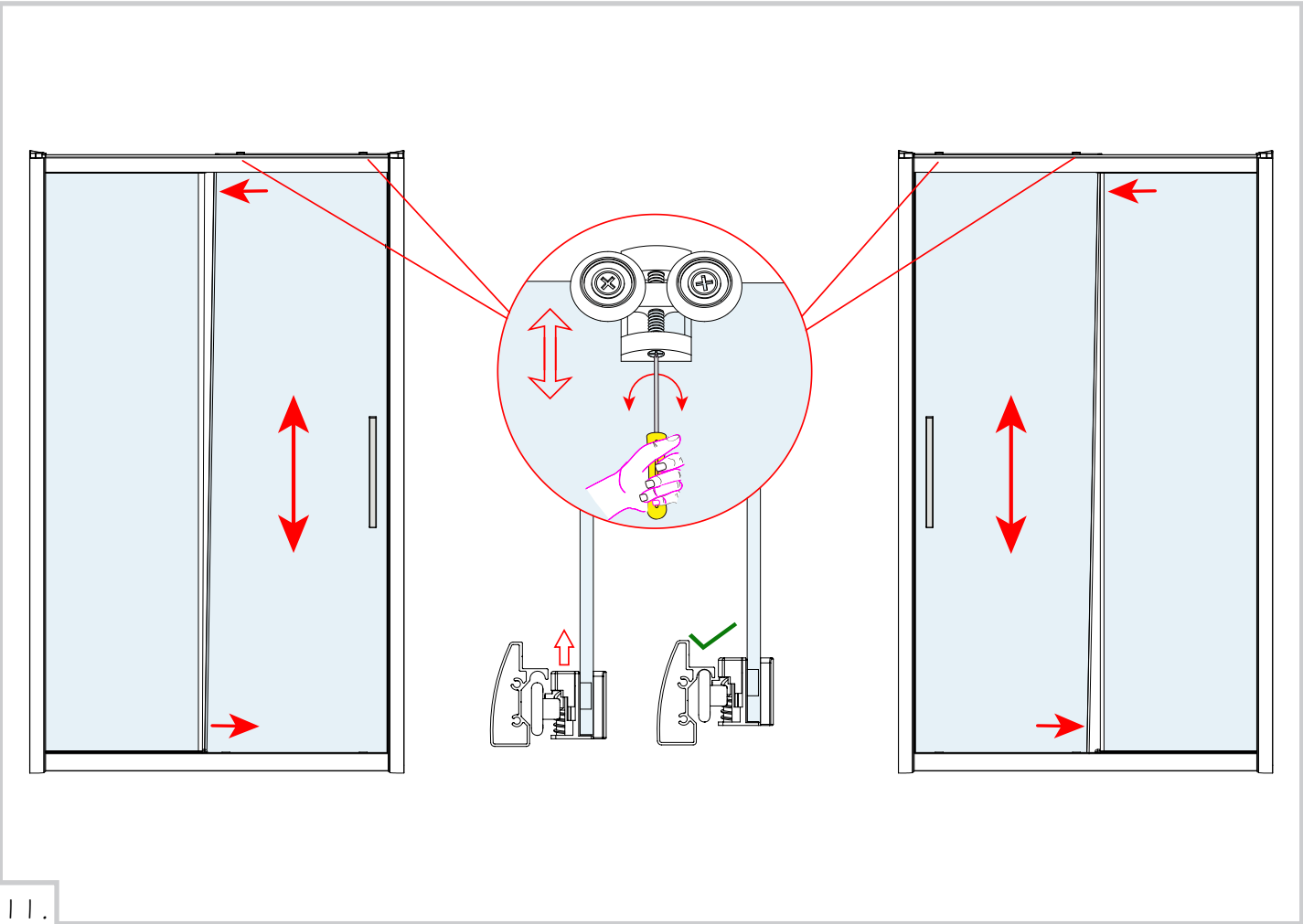


10.



1.

2.



11.

7.

