

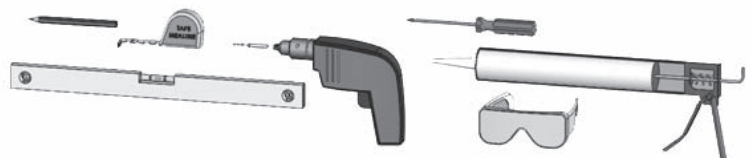
# NaMara flair



80cm  
90cm  
100cm

- EN HINGED DOOR SHOWER ENCLOSURE
- FR PORTE PIVOTANTE AVEC CHARNIÈRES
- ITA PORTA A CARDINI BOX DOCCIA
- GER SCHWINGTÜR MIT SCHARNIEREN

- EN INSTALLATION TOOLS REQUIRED
- FR OUTILS POUR L'INSTALLATION
- ITA STRUMENTI PER L'INSTALLAZIONE
- GER MONTAGEWERKZEUGE
- NL INSTALLATIEMATERIAAL



1/INS/044501  
IN006KHDAE1

EN

BEFORE YOU INSTALL YOUR SHOWER ENCLOSURE  
PLEASE READ ALL INSTRUCTIONS.  
FAILURE TO DO SO MAY LEAD TO INVALIDATION OF YOUR WARRANTY

- The shower tray MUST be fitted level, tiled in and sealed along its entire wall length.
- Glass door edges are vulnerable. Contact with hard surfaces may result in glass breakage.
- The shower enclosure should be sealed on the outside using silicon sealant.
- Check walls for electrical cabling or water pipes before drilling.

FR

AVANT D'INSTALLER VOTRE PAROI DE DOUCHE, LIRE  
ATTENTIVEMENT TOUTES LES INSTRUCTIONS. LE NON RESPECT DE  
CETTE CONSIGNE ANNULERA LA GARANTIE DE VOTRE PRODUIT

- Le receveur doit être monté de niveau et scellé entièrement le long du mur.
- Les bords des portes en verre sont vulnérables. Le contact avec une surface dure peut casser le verre.
- L'extérieur du receveur doit être scellé avec du silicone.
- Avant de percer, vérifier que dans vos murs il ne figure aucun câble électrique ou conduite d'eau.

ITA

PRIMA DI INSTALLARE IL BOX DOCCIA, SIETE PREGATI DI LEGGERE ATTENTAMENTE  
LE ISTRUZIONI. LA MANCATA OSSERVANZA DELLE ISTRUZIONI D'INSTALLAZIONE  
PUÒ COMPORTARE L'INVALIDITÀ DELLA GARANZIA.

- Il piatto doccia DEVE ESSERE installato in piano, piastrellato e sigillato su tutta la lunghezza della parete a contatto.
- I bordi della porta a vetro sono fragili. Il contatto con superfici dure potrebbe causarne la rottura.
- Il box doccia dovrebbe essere sigillato sul lato esterno con del silicone.
- Prima di usare il trapano controllare che in corrispondenza dei fori nel muro non vi siano passaggi di cavi elettrici o tubi dell'acqua.

GER

BITTE LESEN SIE VOR DER MONTAGE IHRER DUSCHKABINE DIE GESAMTE ANLEITUNG.  
NICHTBEACHTUNG KANN ZUR ERLÖSCHUNG IHRER GARANTIE FÜHREN.

- Die Duschwanne MUSS eben aufgestellt, eingefliest und entlang ihrer gesamten Wandlänge abgedichtet werden.
- Die Ecken der Glastüren sind zerbrechlich. Kontakt mit harten Oberflächen kann zu Glasbruch führen.
- Die Duschkabine muss von außen mit Dichtmittel versiegelt werden.
- Stellen Sie vor dem Bohren sicher, dass sich keine elektrischen Kabel oder Wasserrohre in den Wänden befinden.

NL

LEES ALLE INSTRUCTIES GOED DOOR VOORDAT U DE DOUCHEDEUR OF  
DOUCHEWAND INSTALLEERT. HET NIET NALEVEN VAN DEZE INSTRUCTIES KAN  
UW GARANTIE BEPERKEN OF ZELFS TE NIET DOEN.

- De douchebak MOET waterpas geïnstalleerd worden, met tegels vastgezet worden en alle wandaansluitingen moeten met kit goed gedicht worden.
- Hoeken van glazen deuren zijn kwetsbaar. Contact met harde voorwerpen kan leiden tot glasschade.
- De douchedeur of douchewand dient aan de buitenkant met kit afgedicht te worden.
- Controleer vóórdát u begint te boren of zich elektrische leidingen of waterleidingen in de wand bevinden.

EN

PRODUCT SIZE

FR

DIMENSIONS DE LA PORTE

ITA

DIMENSIONE PRODOTTO

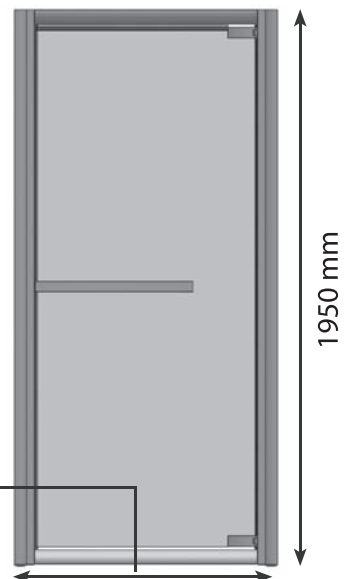
GER

PRODUKTGRÖßE

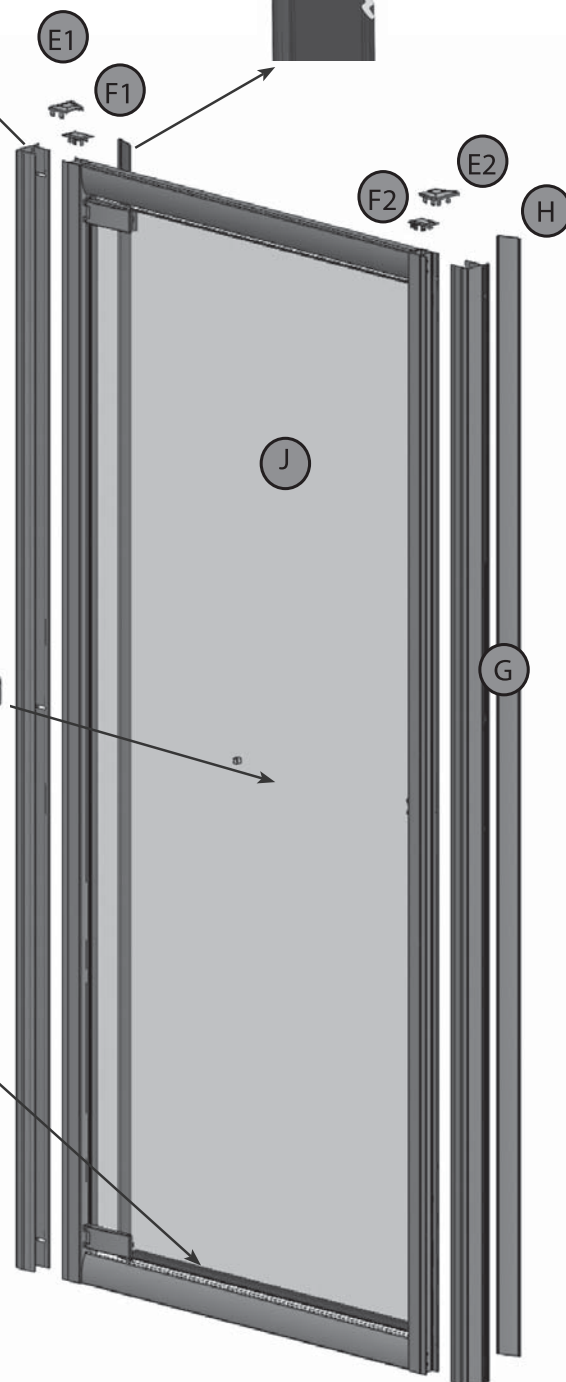
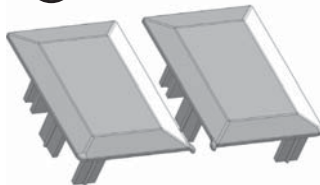
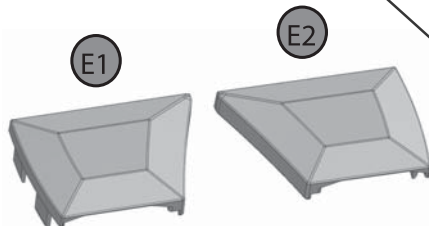
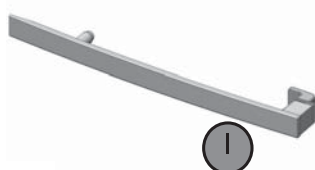
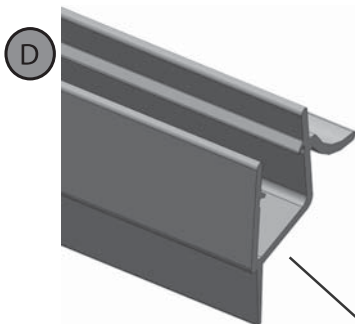
NL

PRODUCTOMVANG

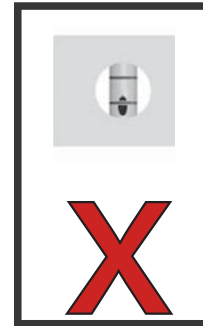
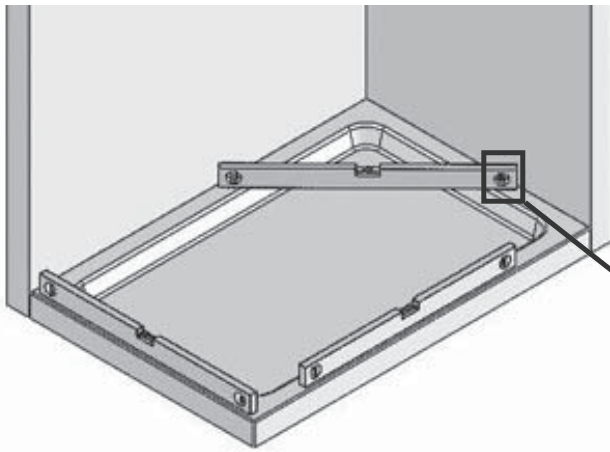
750 - 800 mm  
850 - 900 mm  
950 - 1000 mm



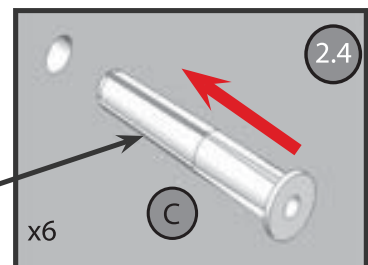
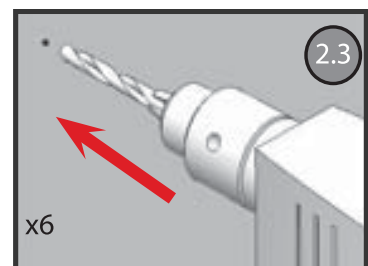
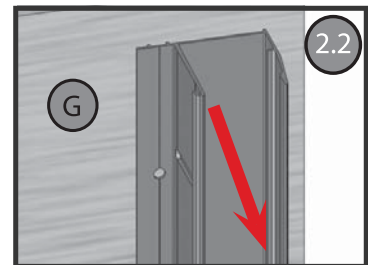
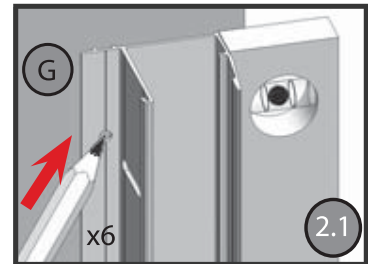
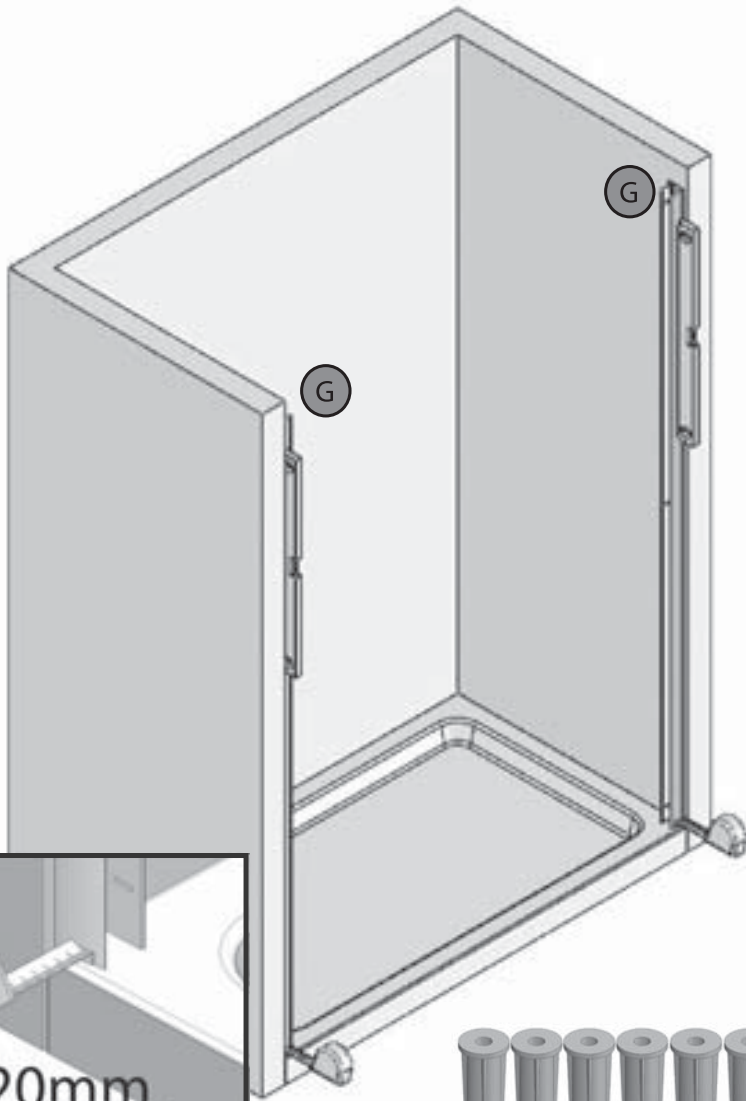
COMPONENT PACK / CONTENU DU SACHET / IMBALLAGGIO COMPONENTE /  
KOMPONENTEN - VERPACKUNG / VERPAKKING ONDERDELEN

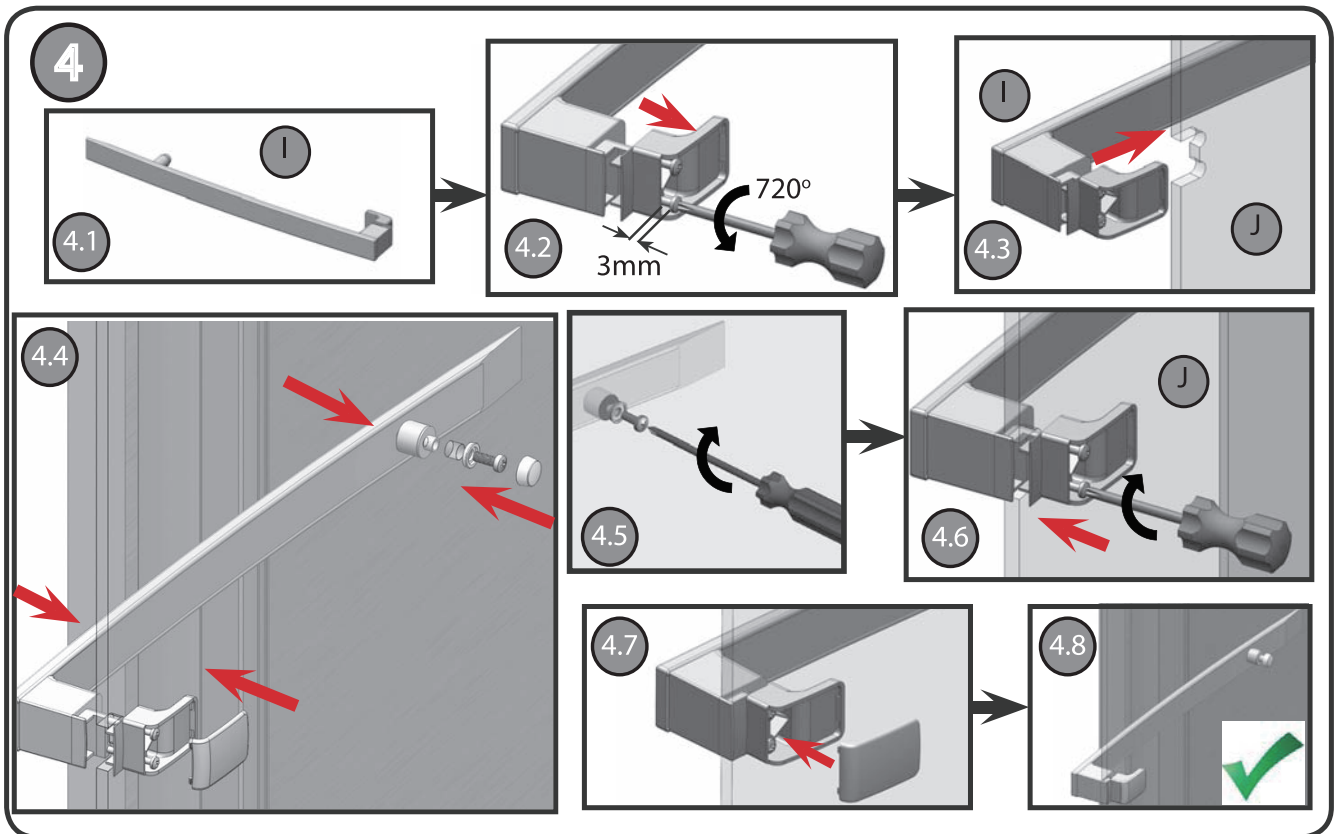
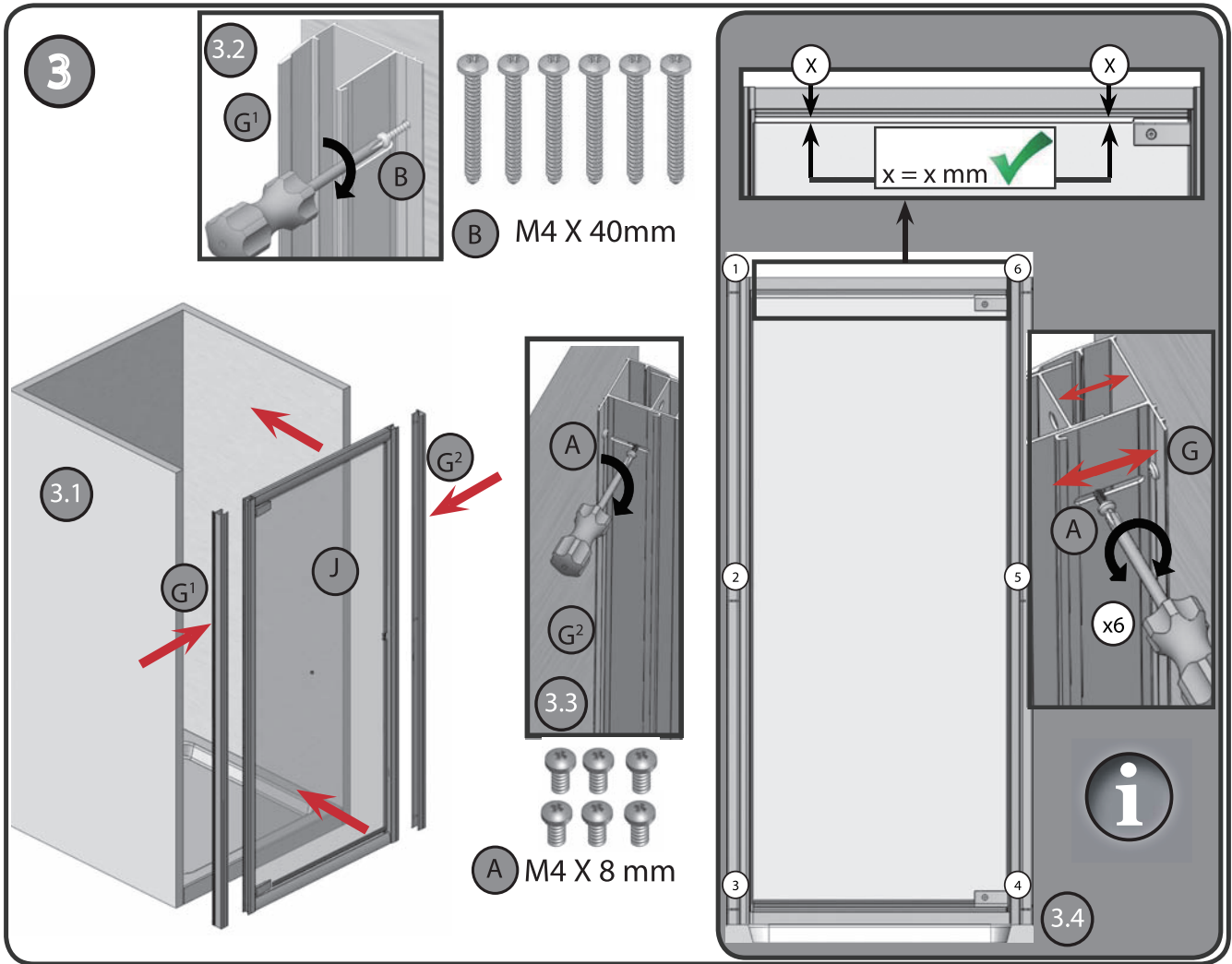


1

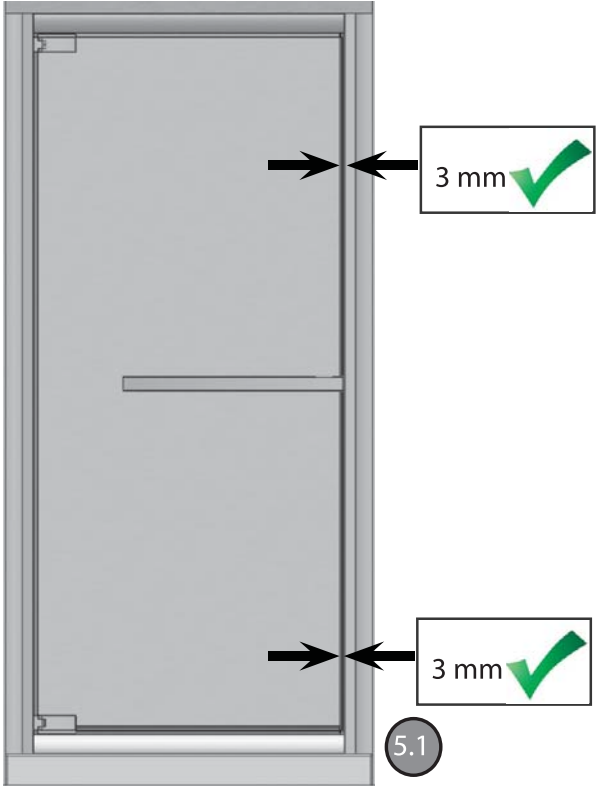


2

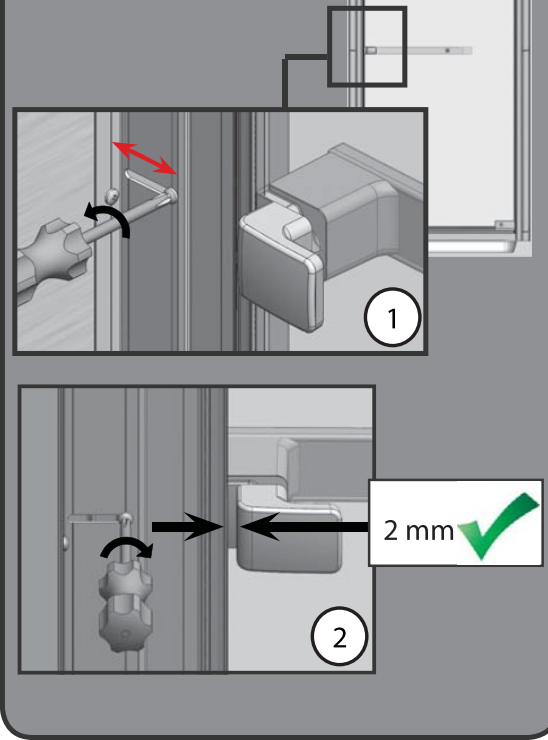




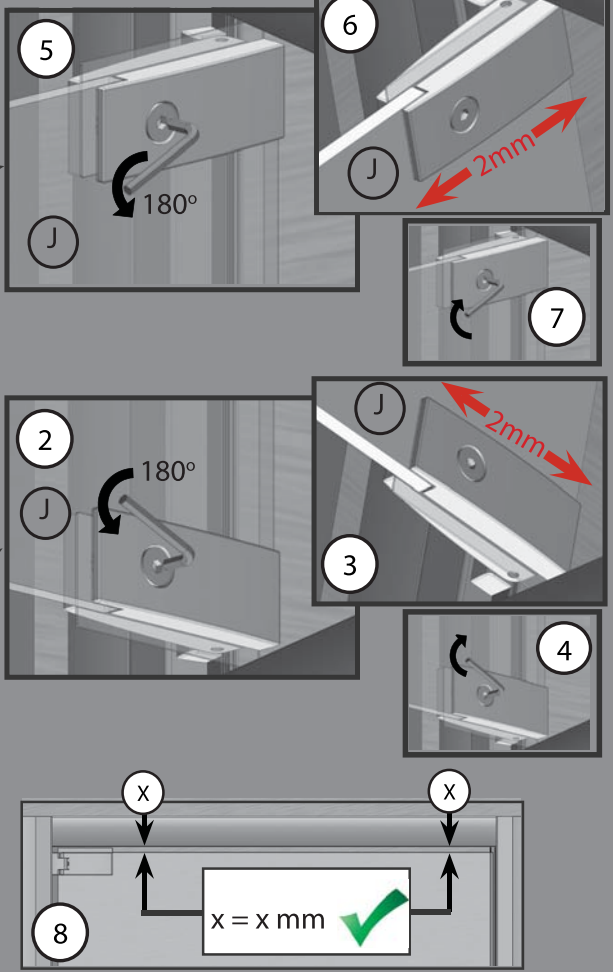
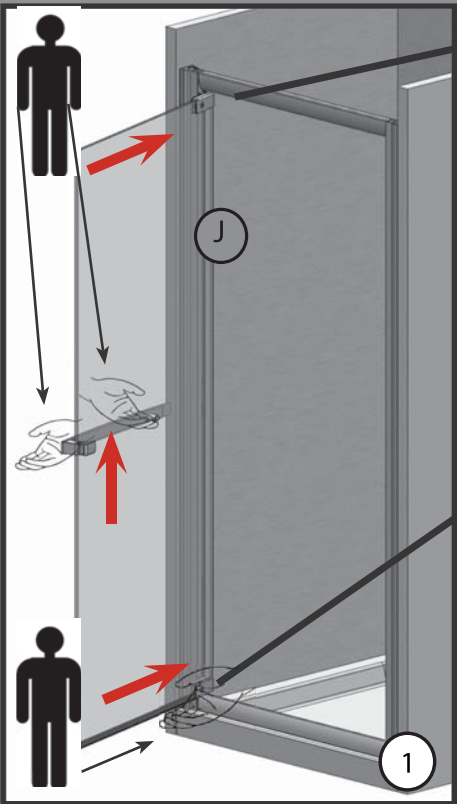
5

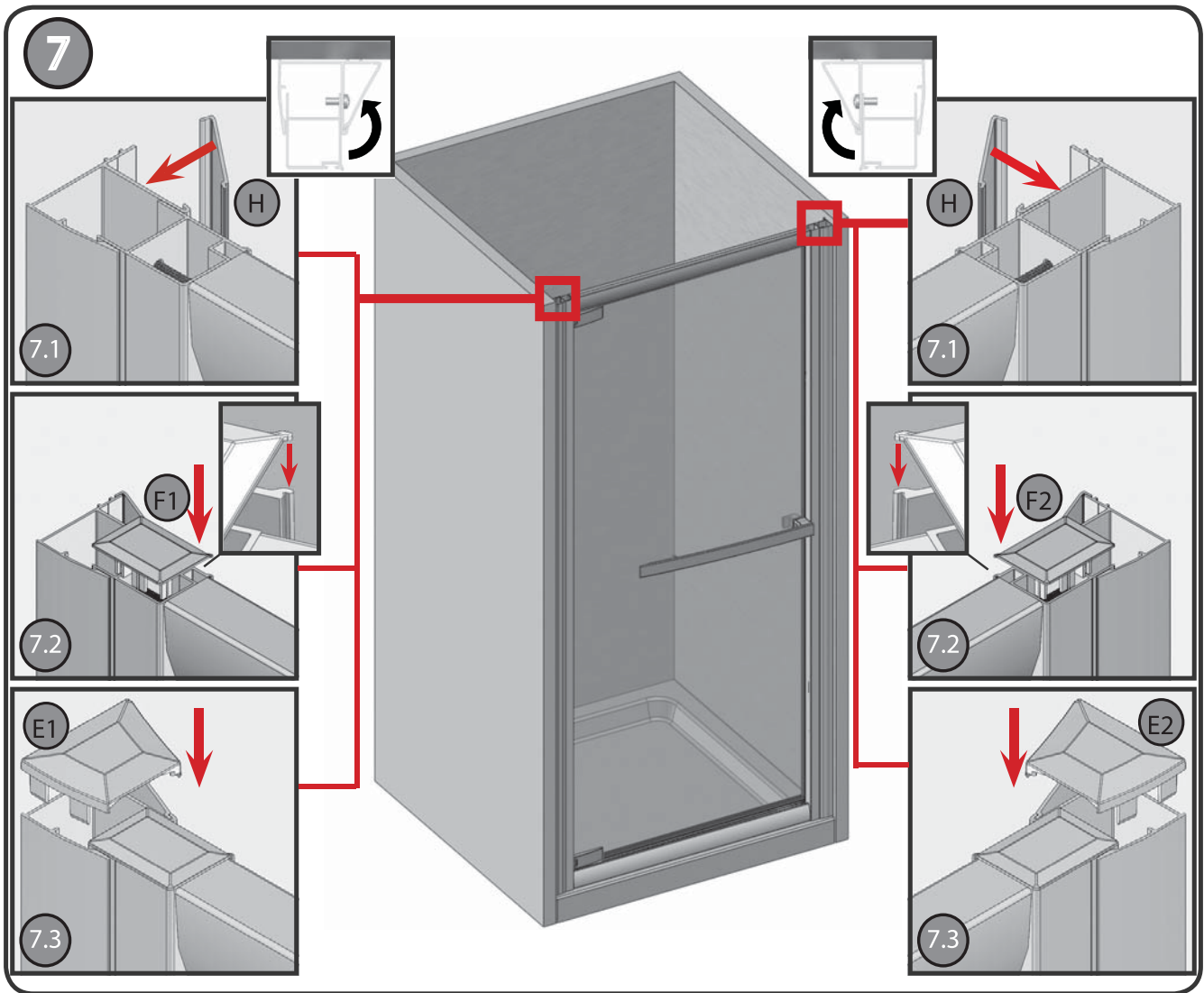
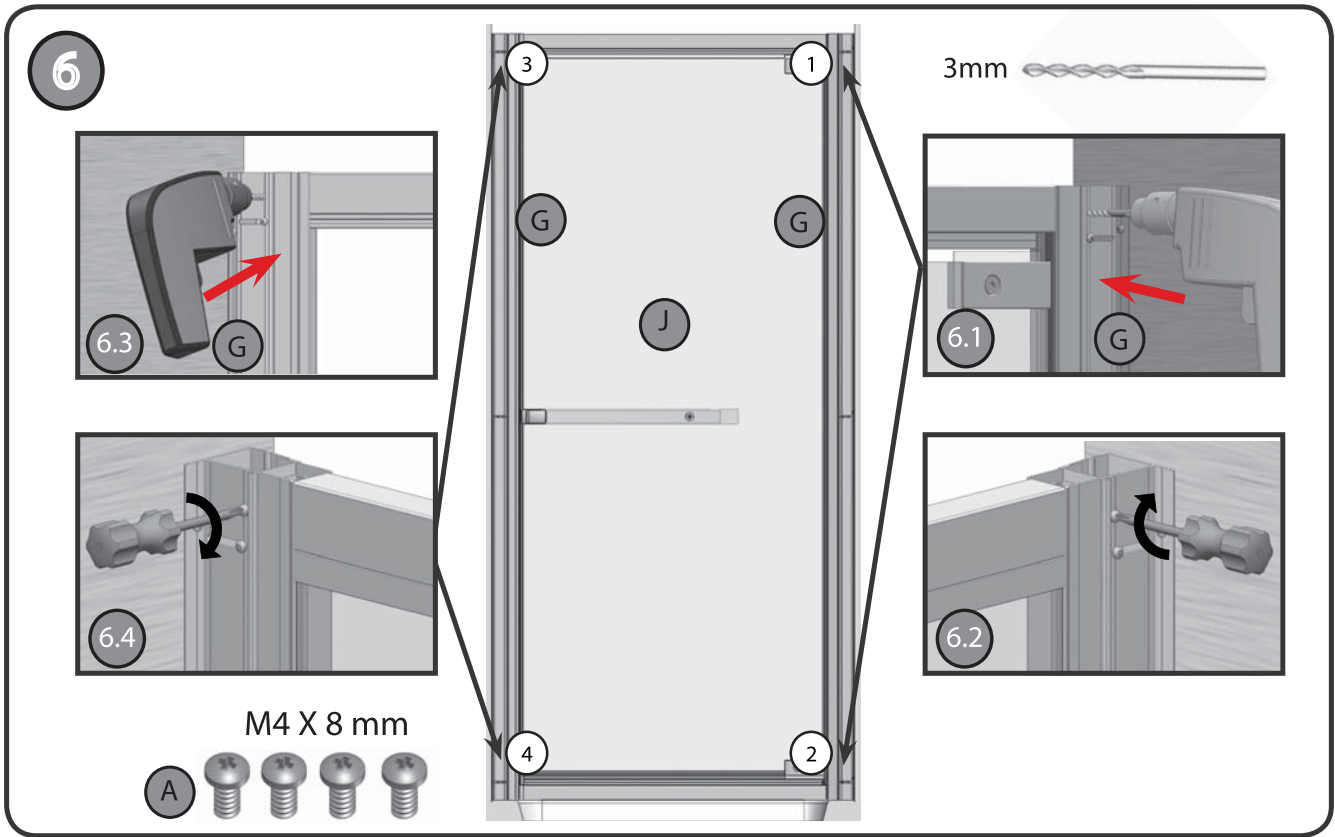


i

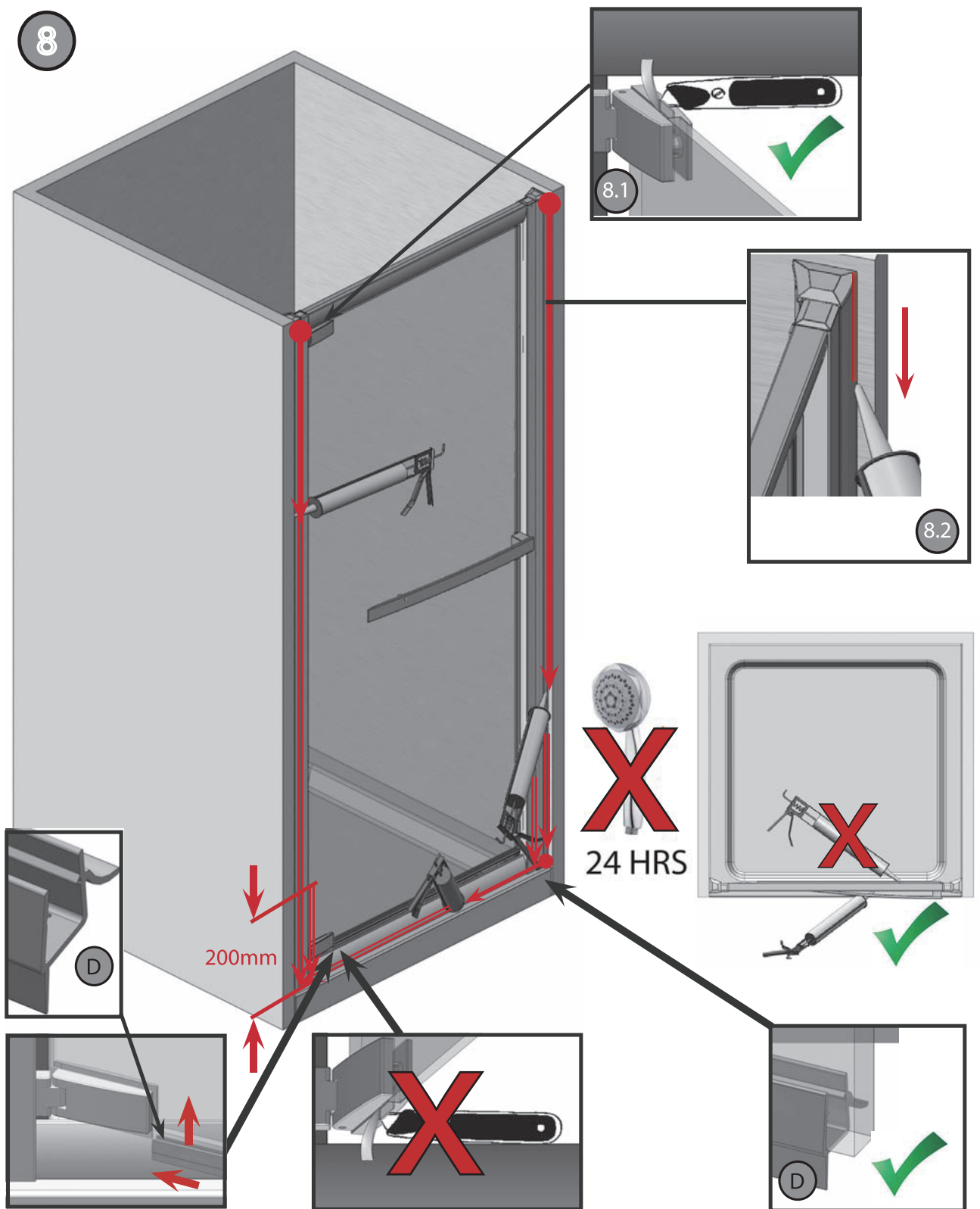


i





8



<b>CE</b>	
Flair Showers Ltd., Rocks Road, Kingscourt, Co. Cavan, Ireland	
17	NA0002-05
NHD	PH
EN 14428	CA-IR-DA

EN14428  
 EN12150 - 1  
 EN ISO 9001:2008

Flair Showers Ltd., Rocks Road, Kingscourt, Co. Cavan, Ireland

+353 42 966 8000

[www.flairshowers.com](http://www.flairshowers.com)