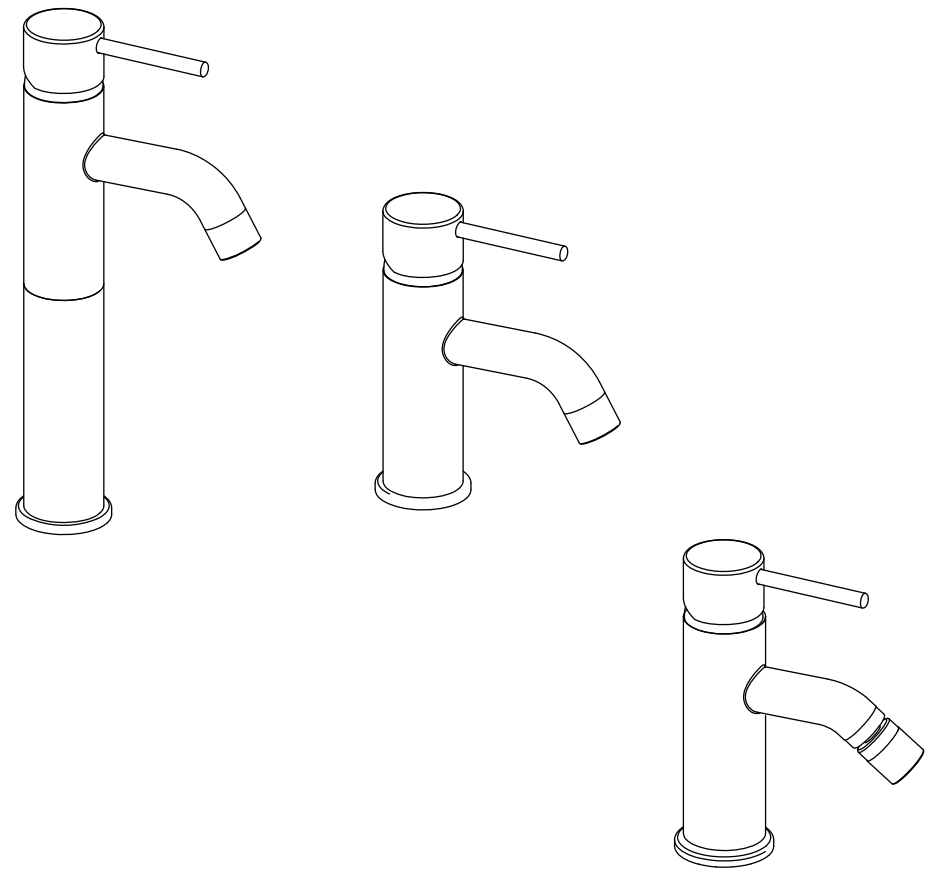


GENERIC TAPS  
RUBINETTI GENERICI

ASSEMBLY INSTRUCTIONS  
ISTRUZIONI DI MONTAGGIO

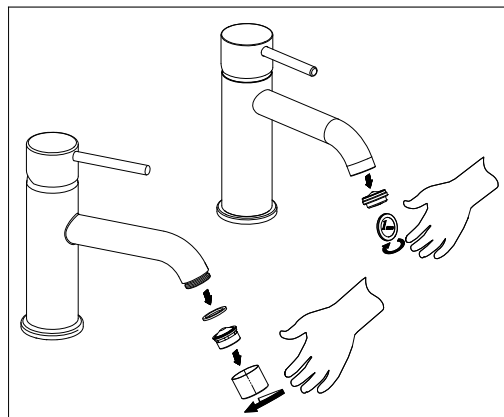
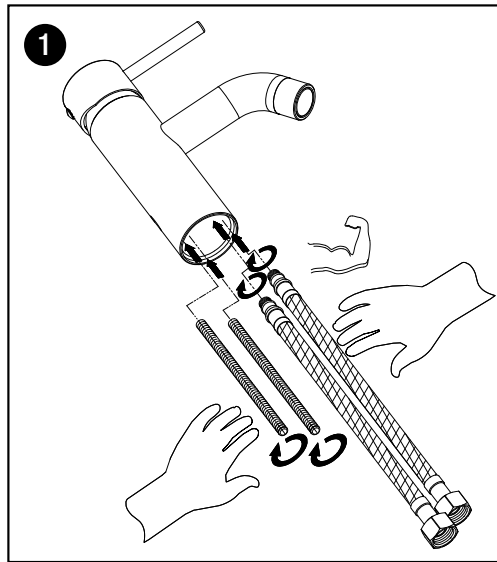
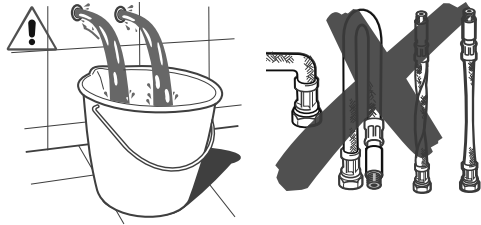


AC78CC211ISTN

## GB INSTALLATION INSTRUCTIONS

Water Supply	Recommended	Max	Min
Hot water temperature	65 °C (~150F)	80 °C (~175F)	15 °C (~60F)
Working pressure	3 BAR (~45PSI)	5 BAR (~75PSI)	0.5 BAR (~7PSI)

In case of pressures over 5 BAR (~75 PSI), we recommend to use a pressure reducer. Before proceeding with the assembly, purge the hot and cold water pipes so as to avoid the accumulation of dirt and impurities that could affect the function of the faucet.



## IT ISTRUZIONI DI INSTALLAZIONE

Alimentazione	Raccomandato	Max	Min
temperatura acqua calda	65 °C (~150F)	80 °C (~175F)	15 °C (~60F)
pressione	3 BAR (~45PSI)	5 BAR (~75PSI)	0.5 BAR (~7PSI)

In caso di pressioni di esercizio superiori a 5 BAR (~75 PSI), si consiglia l'uso di un riduttore di pressione. Prima di procedere al montaggio, si consiglia di spurgare le tubature dell'acqua calda e fredda onde evitare che sporcizia e piccole impurità compromettano il funzionamento del rubinetto.

