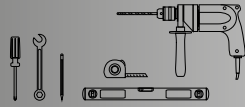
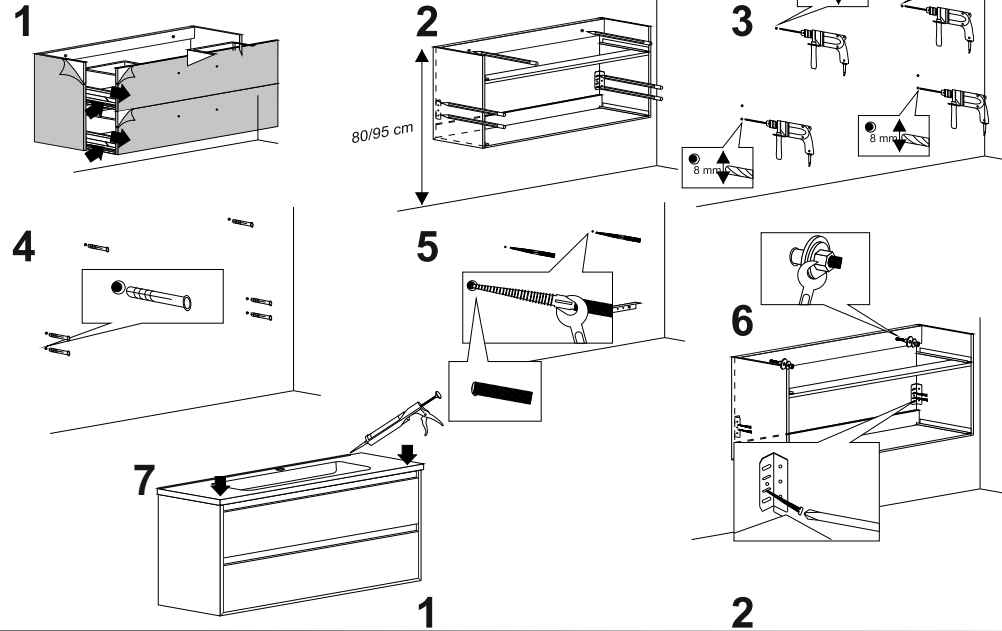


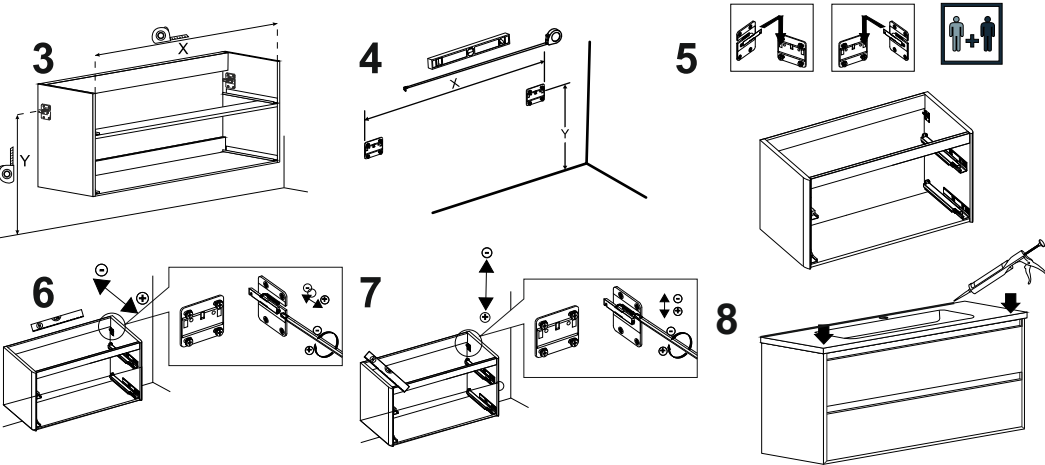
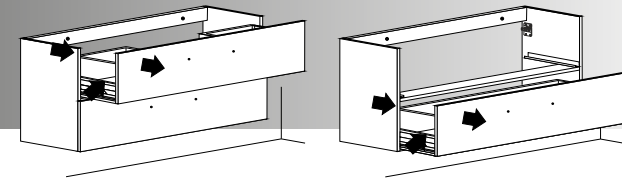
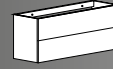
Base lavabo
Base unit
Base sous-lavabo
Waschbeckenunters
cheank



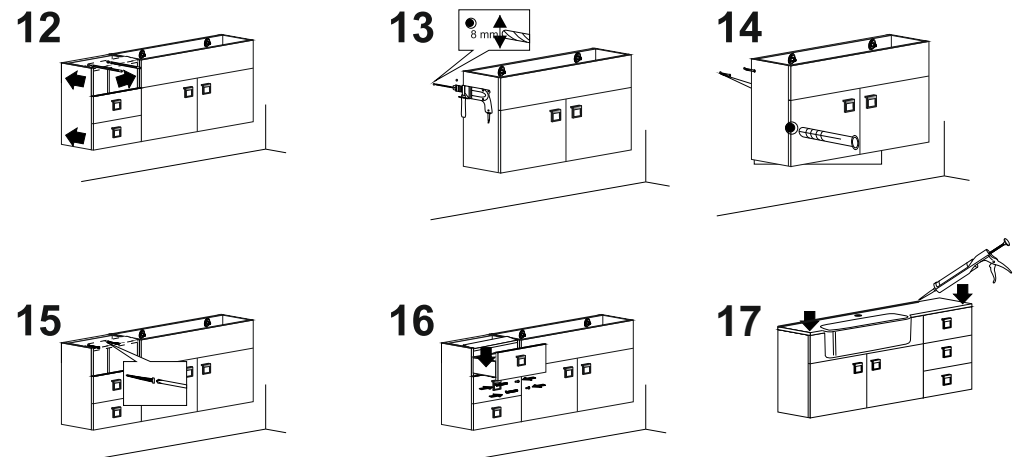
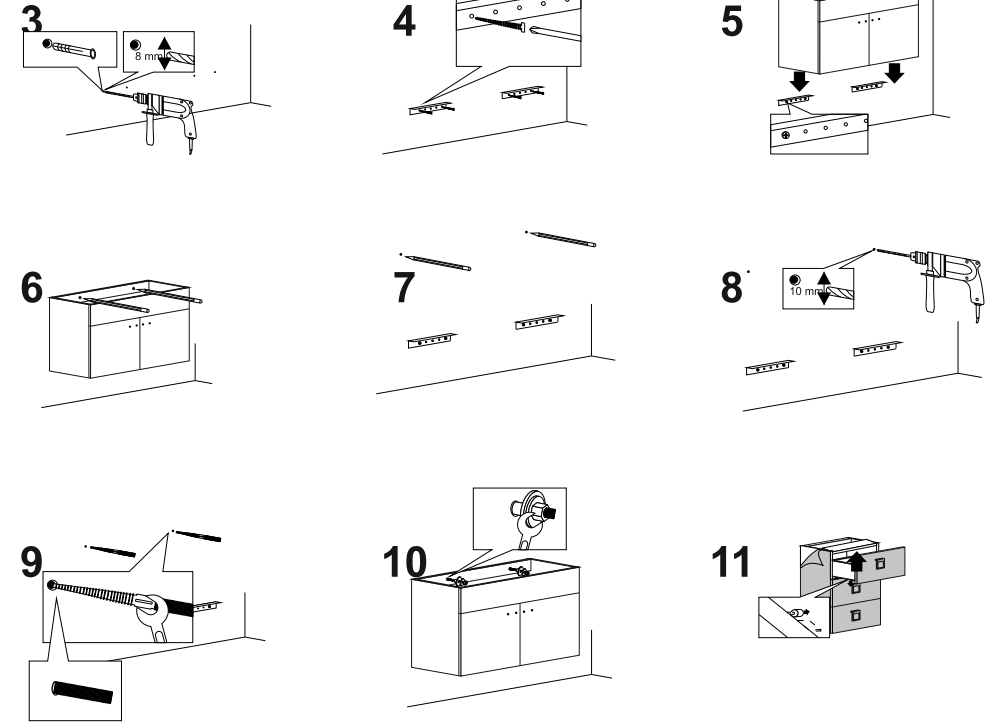
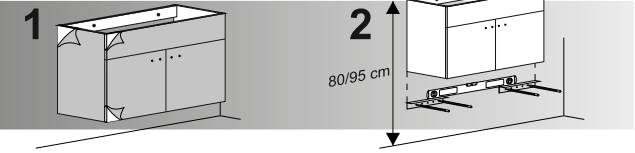
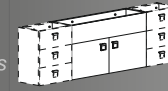
BADEN HAUS S.p.A

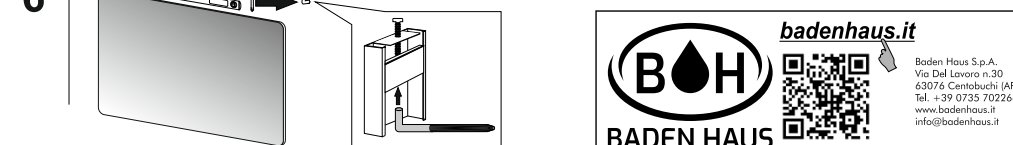
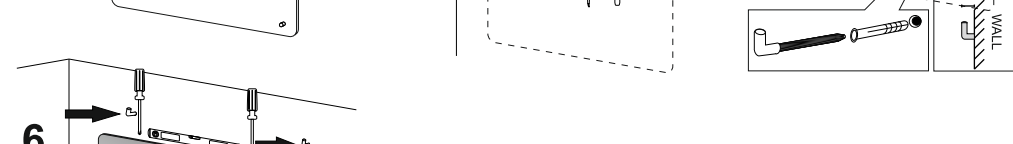
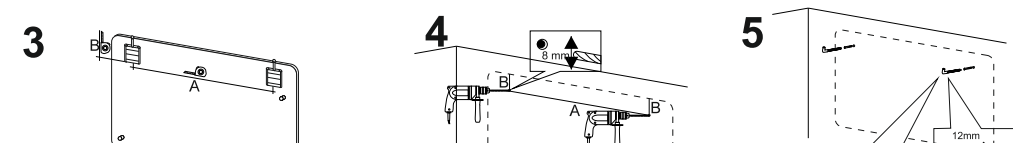
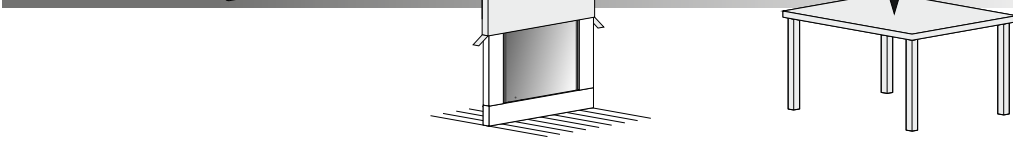
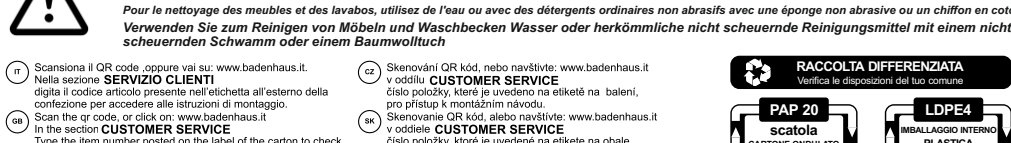
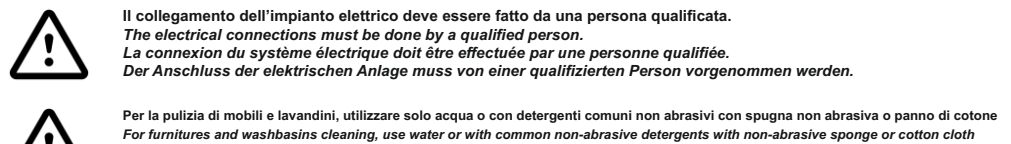
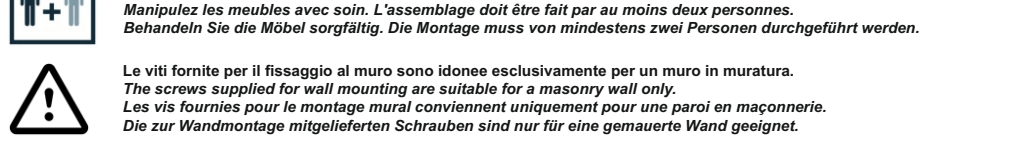
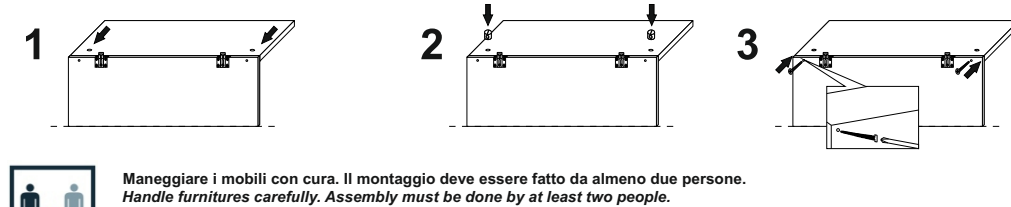
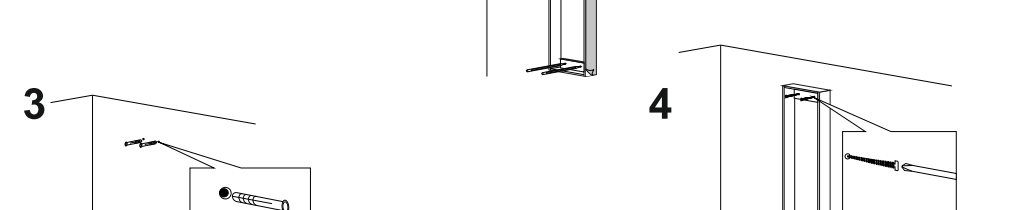
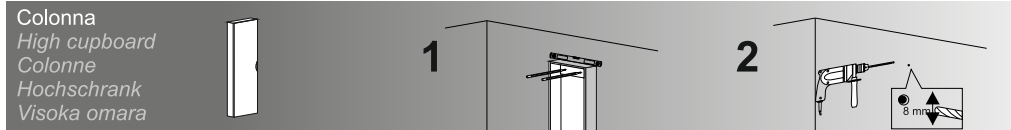
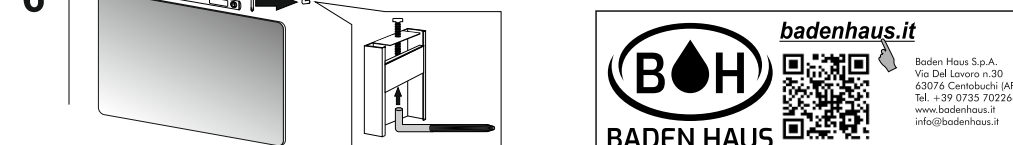
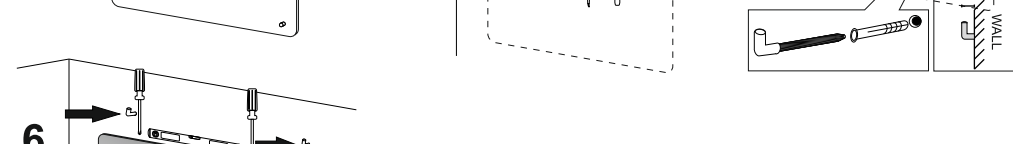
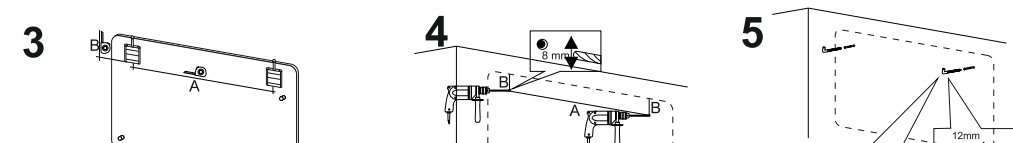
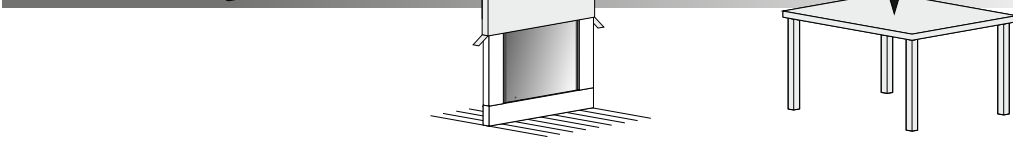
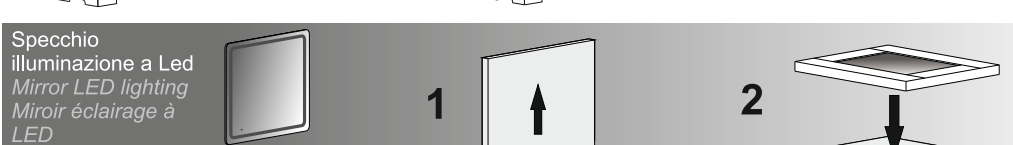
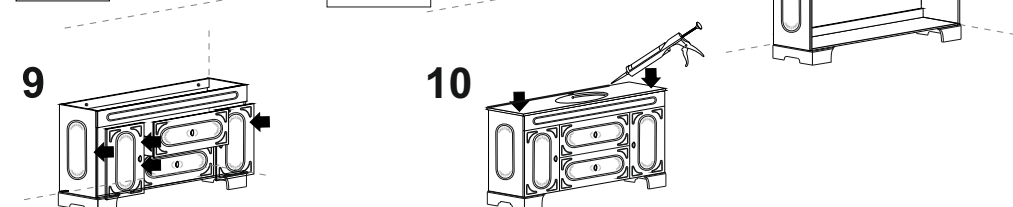
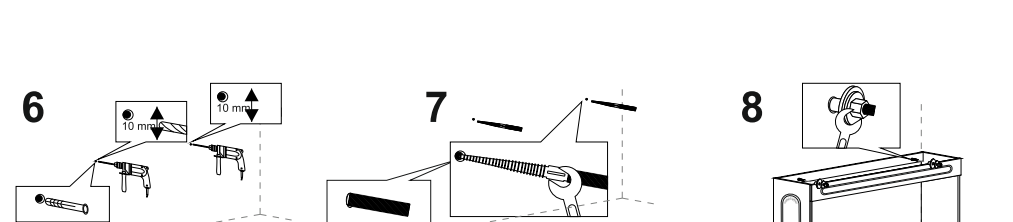
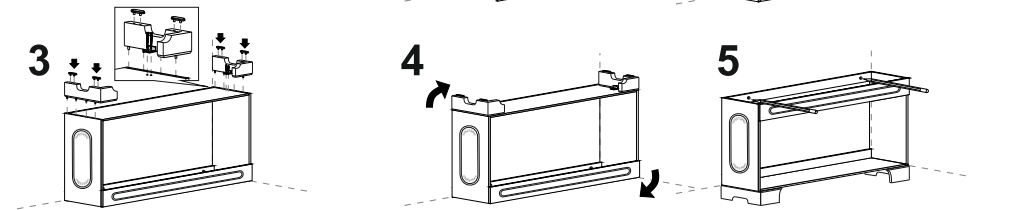
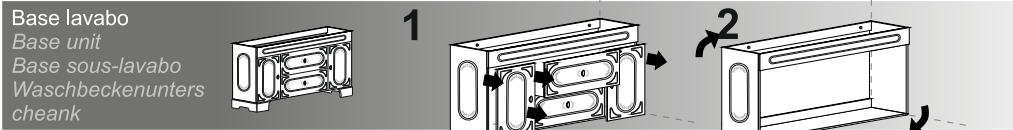


Base lavabo
Base unit
Base sous-lavabo
Waschbeckenunters
cheank



Base lavabo
Base unit
Base sous-lavabo
Waschbeckenunters
cheank





Maneggiare i mobili con cura. Il montaggio deve essere fatto da almeno due persone.
Handle furnitures carefully. Assembly must be done by at least two people.
Manipulez les meubles avec soin. L'assemblage doit être fait par au moins deux personnes.
Behandeln Sie die Möbel sorgfältig. Die Montage muss von mindestens zwei Personen durchgeführt werden.

Le viti fornite per il fissaggio al muro sono idonee esclusivamente per un muro in muratura.
The screws supplied for wall mounting are suitable for a masonry wall only.
Les vis fournies pour le montage mural conviennent uniquement pour une paroi en maçonnerie.
Die zur Wandmontage mitgelieferten Schrauben sind nur für eine gemauerte Wand geeignet.

Il collegamento dell'impianto elettrico deve essere fatto da una persona qualificata.
The electrical connections must be done by a qualified person.
La connexion du système électrique doit être effectuée par une personne qualifiée.
Der Anschluss der elektrischen Anlage muss von einer qualifizierten Person vorgenommen werden.

Per la pulizia di mobili e lavandini, utilizzare solo acqua o con detersivi comuni non abrasivi con spugna non abrasiva o panno di cotone
For furnitures and washbasins cleaning, use water or with common non-abrasive detergents with non-abrasive sponge or cotton cloth
Pour le nettoyage des meubles et des lavabos, utilisez de l'eau ou avec des détergents ordinaires non abrasifs avec une éponge non abrasive ou un chiffon en coton
Verwenden Sie zum Reinigen von Möbeln und Waschbecken Wasser oder herkömmliche nicht scheuernde Reinigungsmittel mit einem nicht scheuernden Schwamm oder einem Baumwolltuch

badenhaus.it

Baden Haus S.p.A.
Via Del Lavoro n.30
63076 Centobuchi (AP)
Tel. +39 0735 702266
www.badenhaus.it
info@badenhaus.it

RACCOLTA DIFFERENZIATA
Verifica le disposizioni del tuo comune

PAP 20
scatola
CARTONE ONDULATO
raccolta
CARTA

LDPE4
IMBALLAGGIO INTERNO
PLASTICA
raccolta
PLASTICA

FR
Donnez ou recyclez vos meubles.
Association Magasin Déchèterie
https://quelsiredemesdechets.fr

FR
Cet appareil se recycle
A separar în bucătărie în recipiente
Points de collecte sur www.quelsiredemesdechets.fr
Pratigați la reparație sau la don de către un agent

LE TRI + FACILE
CARTON + POCHE PLASTICE
BAC DE TRI

IT Scansiona il QR code oppure vai su: www.badenhaus.it.
Nella sezione **SERVIZIO CLIENTI** digita il codice articolo presente nell'etichetta all'esterno della confezione per accedere alle istruzioni di montaggio.

GB Scan the qr code, or click on: www.badenhaus.it In the section **CUSTOMER SERVICE** Type the item number posted on the label of the carton to check the instruction.

FR Scannez le QR - code , ou rendez vous sur le site www.badenhaus.it.
A la page **SERVIZIO CLIENTS** Saisissez le "code article" present sur l' étiquette à l' extérieur de l' emballage pour accéder aux intructions de montage .

DE QR code einscannen, oder siehe bei: www.badenhaus.it in der Sektion **KUNDENSERVICE** die Artikelnummer eingeben, welche auf der Etikette an der Verpackung beschriftet ist, fuer den Zugang an die Montageanleitung.

AT QR-code op de verpakking scannen, of direkt op: www.badenhaus.it Op de site in het gedeelte **CUSTOMER SERVICE** eenvoudig het artikelnummer, wat op het etiket op de verpakking staat vermeld,ingeven.

NL QR-code op de verpakking scannen, of direkt op: www.badenhaus.it In de afdeling **CUSTOMER SERVICE** eenvoudig het artikelnummer, wat op het etiket op de verpakking staat vermeld,ingeven.

SE Skanna QR-koden, eller gå till: www.badenhaus.it i avsnittet: **CUSTOMER SERVICE** anger följande produktkod på etiketten utisidan av förpackningen för att komma till instruktionerna.

RU Сканирование QR-код, или по адресу: www.badenhaus.it. В разделе: **Обслуживание клиентов** введите код на этикетке снаружи упаковки для доступа к инструкции.

CZ Skenování QR kód, nebo navštivte: www.badenhaus.it v oddílu **CUSTOMER SERVICE** číslo položky, které je uvedeno na etiketě na balení, pro přístup k montážním návodu.

SK Skenovanie QR kód, alebo navštívte: www.badenhaus.it v oddiele **CUSTOMER SERVICE** číslo položky, ktoré je uvedené na etikete na obale, pre prístup k montážnym návodu.

HR Skenirajte QR kod, ili idi na: www.badenhaus.it. U odjeljku: **CUSTOMER SERVICE** unesite kod na naljepnici izvan paketa kako biste pristupili uputama.

SI Skenirajte QR kodo ali obiščite spletno stran: www.badenhaus.it. V sklopu **CUSTOMER SERVICE** vnesite kodo izdelka, ki se nahaja na nalepki na zunanji strani pakiranja, in si zagotovite dostop do navodil za montažo.

PL Zeskanuj kod QR lub przejdź do: www.badenhaus.it. W dziale: **CUSTOMER SERVICE** wpisz kod na etykiecie poza pakietem, by przejść do instrukcji.

HU A szerelési útmutatót a QR kódot beszkennelve érheti el, vagy írja be a www.badenhaus.it oldalon a **CUSTOMER SERVICE** ponthoz a csomagoláson látható cíkjélemezre.

RO Scanati codul QR, sau du-te la: www.badenhaus.it. In sectiunea de **CUSTOMER SERVICE** introduceți codul de produs prezent pe eticheta exteriora a ambalajului pentru a accesa instrucțiunile.