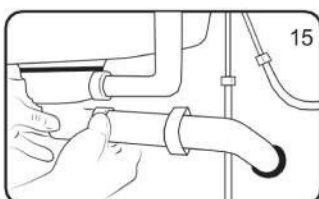
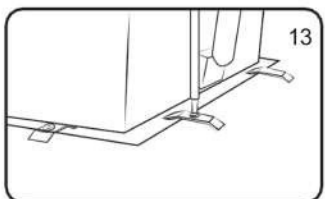
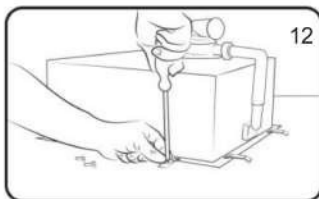
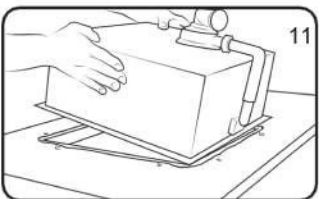
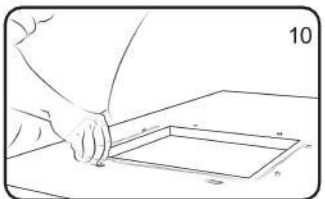
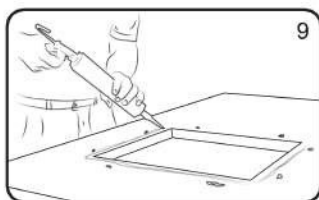
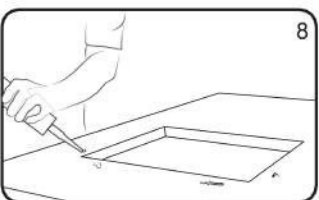
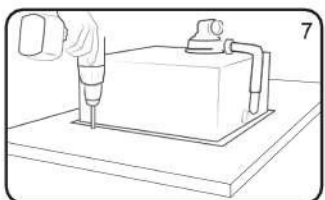
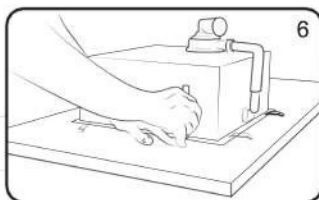
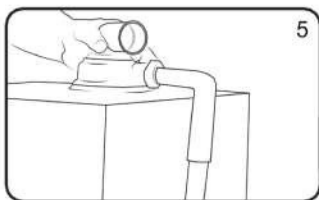
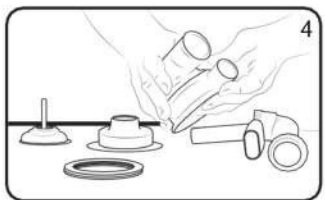
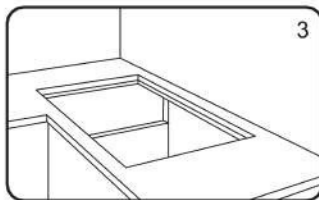
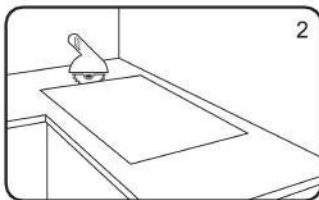
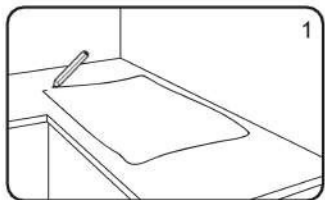


3. INSTALACIÓN BAJO ENCIMERA

3. INSTALAÇÃO INFERIOR



MANUAL DE INSTALACIÓN MANUAL DE INSTALAÇÃO

ANDEMEN GROUP



440 x 440
440 x 440



540 x 440
540 x 440



686 x 457
686 x 457



838 x 457
838 x 457

Usted ha adquirido un fregadero fabricado con acero inoxidable SUS 304 de máxima calidad garantizado de por vida (lea la hoja de garantía del producto).

Su fregadero lleva un aislamiento térmico y acústico en la parte posterior que evita la condensación y reduce el ruido del agua.

Você adquiriu um lava-loiça de aço inoxidável AISI 304 da mais qualidade com garantia vitalícia (lea a folha de garantia do produto).

Seu lava-loiça possui isolamento térmico e acústico na parte externa que reduz o ruído da água e evita a condensação.

Antes de empezar la instalación revise su fregadero:

- Posibles golpes en el transporte
- Rayas o acabado no conforme

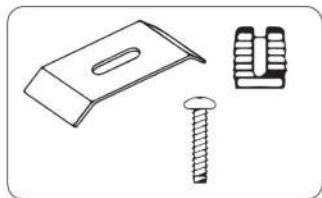
IMPORTANTE: No instale el fregadero si observa algún daño.

Antes de iniciar a instalação, verifique seu lava-loiça:

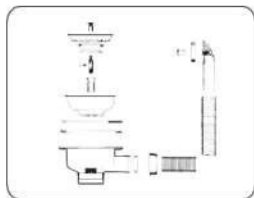
- Possíveis colisões no transporte
- Arranhões ou acabamento não compatível

IMPORTANTE: Não instale o lava-loiça se notar algum dano.

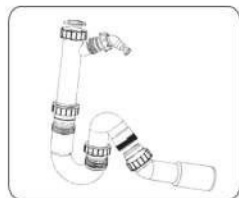
MATERIAL SUMINISTRADO MATERIAL FORNECIDO



x6



x1



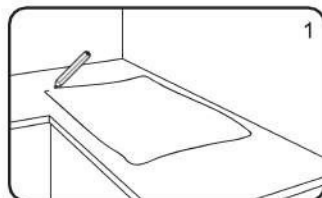
x1

TIPOS DE INTALACIÓN:

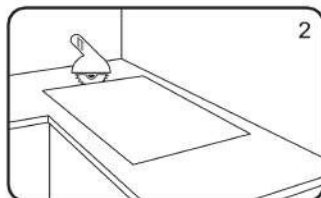
1. INSTALACIÓN SLIM (ENCASTRADO)

TIPOS DE INSTALAÇÃO:

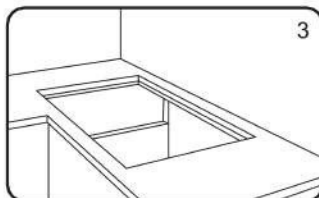
1. INSTALAÇÃO SUPERIOR



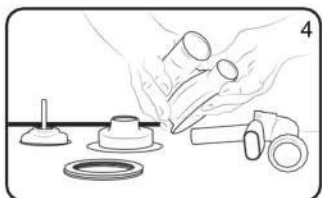
1



2



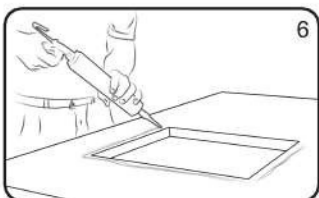
3



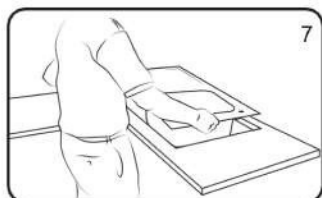
4



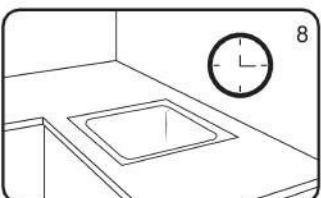
5



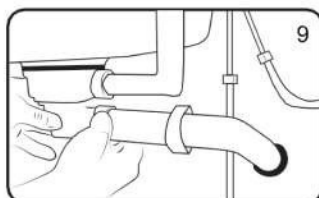
6



7



8



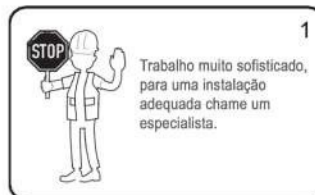
9

!
IMPORTANT: Para la instalación SLIM o ENRASADO, si la encimera tiene un espesor superior a 16mm se deberá realizar un mecanizado en la parte posterior de la encimera para poder colocar el rebosadero.
 El centro del agujero del grifo debe realizarse a una distancia de 6 cm desde el corte de la encimera.

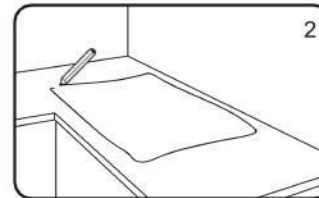
IMPORTANT: Para a instalação SUPERIOR ou A FACE, se a espessura da bancada for superior a 16 mm, a usinagem deve ser feita na parte de trás da bancada para poder encaixar o transbordamento.
 O centro do furo da torneira deve ser feito a uma distância de 6 cm. do corte da bancada.

2. INSTALACIÓN ENRASADO

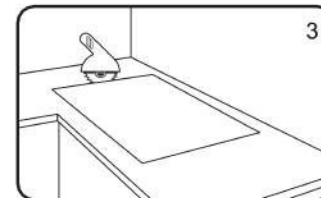
2. INSTALAÇÃO A FACE



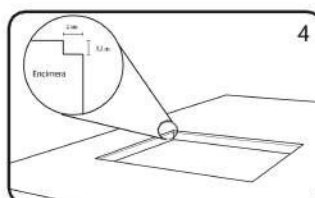
1



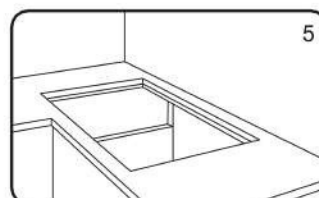
2



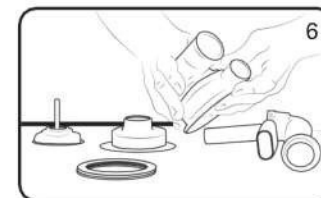
3



4



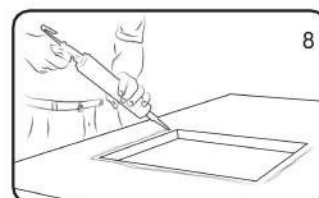
5



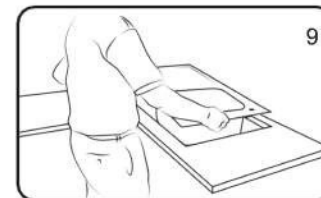
6



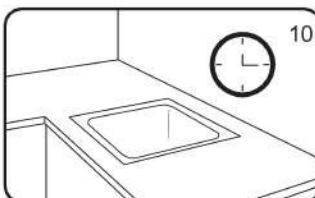
7



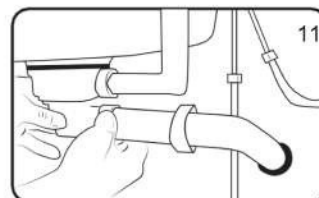
8



9



10



11