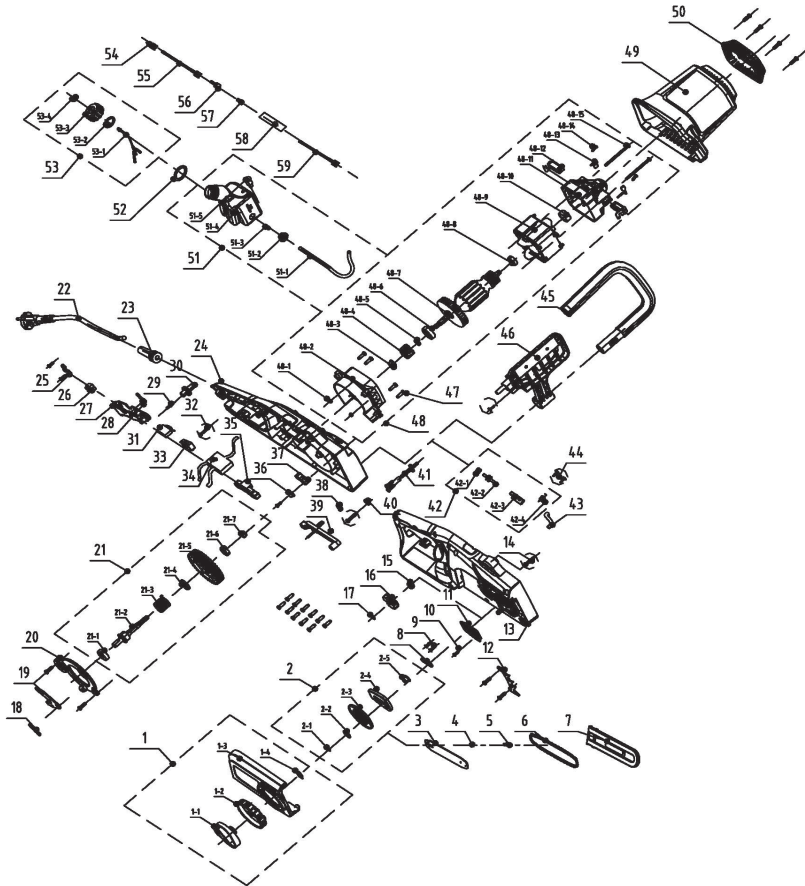


8. EXPLODED VIEW WITH PARTS LIST



8. EXPLODED VIEW WITH PARTS LIST

POS	DESCRIPTION	POS	DESCRIPTION	POS	DESCRIPTION
1	End cap assy	21-6	Bearing	48-3	Nut
1-1	Pressing knob	21-7	Nut	48-4	Motor gear
1-2	Adjustment knob	22	Cable/plug	48-5	Gear sleeve
1-3	End cap	23	Cable sleeve	48-6	Bearing
1-4	Spring	24	Left housing	48-7	Rotor
2	Rotational wheel assy	25	Pressing plate	48-8	Bearing
2-1	Clip	26	Terminal board	48-9	Stator
2-2	Pressing plate	27	Switch button	48-10	Sleeve
2-3	Rotational wheel	28	Spring	48-11	Motor back bracket
2-4	Plate	29	Spring	48-12	Carbon brush & holder assy
2-5	Sleeve	30	Self-locking button	48-13	Connection wire
3	Bar	31	Capacitor	48-14	Screw
4	Seal ring	32	Screw	48-15	Screw
5	Screw	33	Switch	49	Motor cover
6	Chain	34	PCB	50	Decoration cover
7	Bar sleeve	35	Rod	51	Oil tank assy
8	Seal ring	36	Pressing plate	51-1	Oil tube
9	Screw	37	Fixing plate	51-2	Sealing ring
10	Screw	38	Spring	51-3	Spring
11	Gasket	39	Switch rod assy	51-4	Oil tank
12	Buffer board	40	Gasket	51-5	Valve
13	Right housing	41	Oil nozzle assy	52	Rubber pad
14	Screw	42	Oil pump assy	53	Oil tank cap assy
15	Screw	42-1	Turbine gear	53-1	Anti-lost ring
16	Sprocket	42-2	Turbine	53-2	Seal ring
17	E-ring	42-3	Oil pump	53-3	Oil tank cap
18	Spring	42-4	Spring	53-4	Oil tank cap cover
19	Brake plate	43	Oil tube	54	Female terminal
20	Anti-dust cover	44	Screw	55	Connection wire
21	Output shaft assy	45	Front handle	56	Male terminal
21-1	Bearing	46	Chain brake	57	Copper strip
21-2	Output shaft	47	Screw	58	Heat-shrinkable tube
21-3	Brake torsion spring	48	Motor assy	59	Connection wire
21-4	Axle sleeve	48-1	Nut		
21-5	Output shaft gear	48-2	Wind deflector		