

BW89000

EAN:

3276007182330

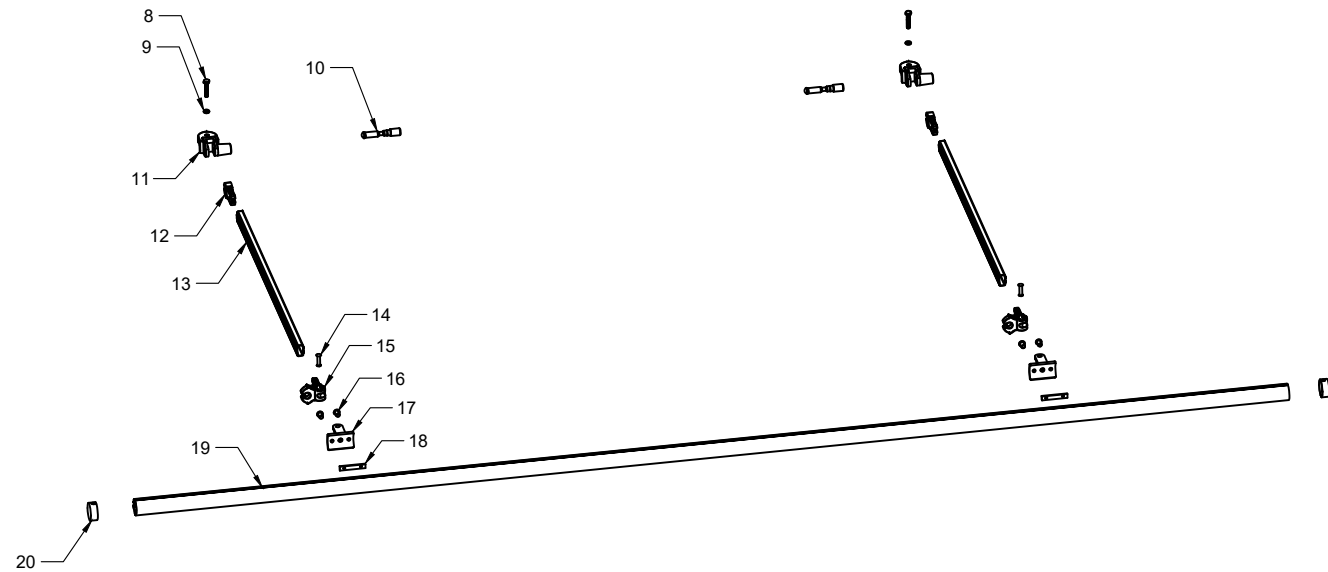
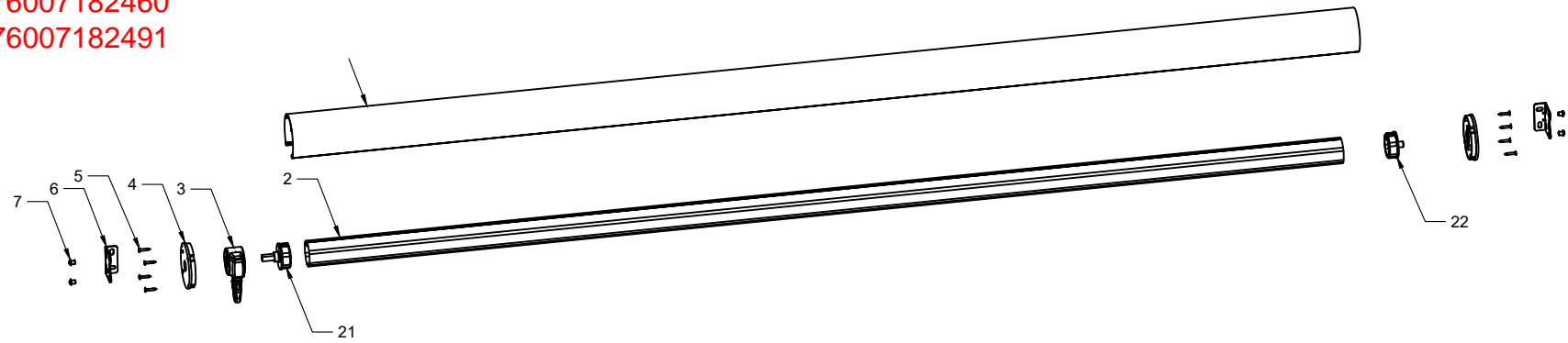
3276007182354

3276007182392

3276007182439

3276007182460

3276007182491



## BW89000 Bill of material

No.	Parts name	Pic.	No.	Size	Material	qty	Remark
1	Cover		1#	Ø10 5	6063	1	
2	Roller		2#	Φ 60	LD31	1	
	Round shafter		22#	Φ 60	PP	1	
	Square shafter		23#	Φ 60	PP	1	
3	Gear box		3#			1	
4	End cap		4#		Y104	2	
	Bolts		5#	M5 × 30	SS	8	
5	Bracket		6#		Cast steel	1set	
	bolts		7#	M8 × 10	SS	4	

6	Bolts		8#	M6 × 30	SS	2	
	Washer		9#	Φ 6.5/ Φ 11	SS	2	
	Bracket for pole		11#		Y104	2	
	Pin		10#	Φ 14.5 *80. 5	SS	2	
	Pole wrist		12#		Y104	2	
	Front bar wrist		15#		Y104	2	
	Pole		13#	Ø16	LD31	2	
7	Front bar bracket		17#		Y104	2	
	Nut board		18#	55* 9*3	6063	2	
	Front bar	C	19#			1	
	Front bar end cap		20#			2	
	Bolts		16#	M5 *10	SS	4	
	Rivet		14#			2	