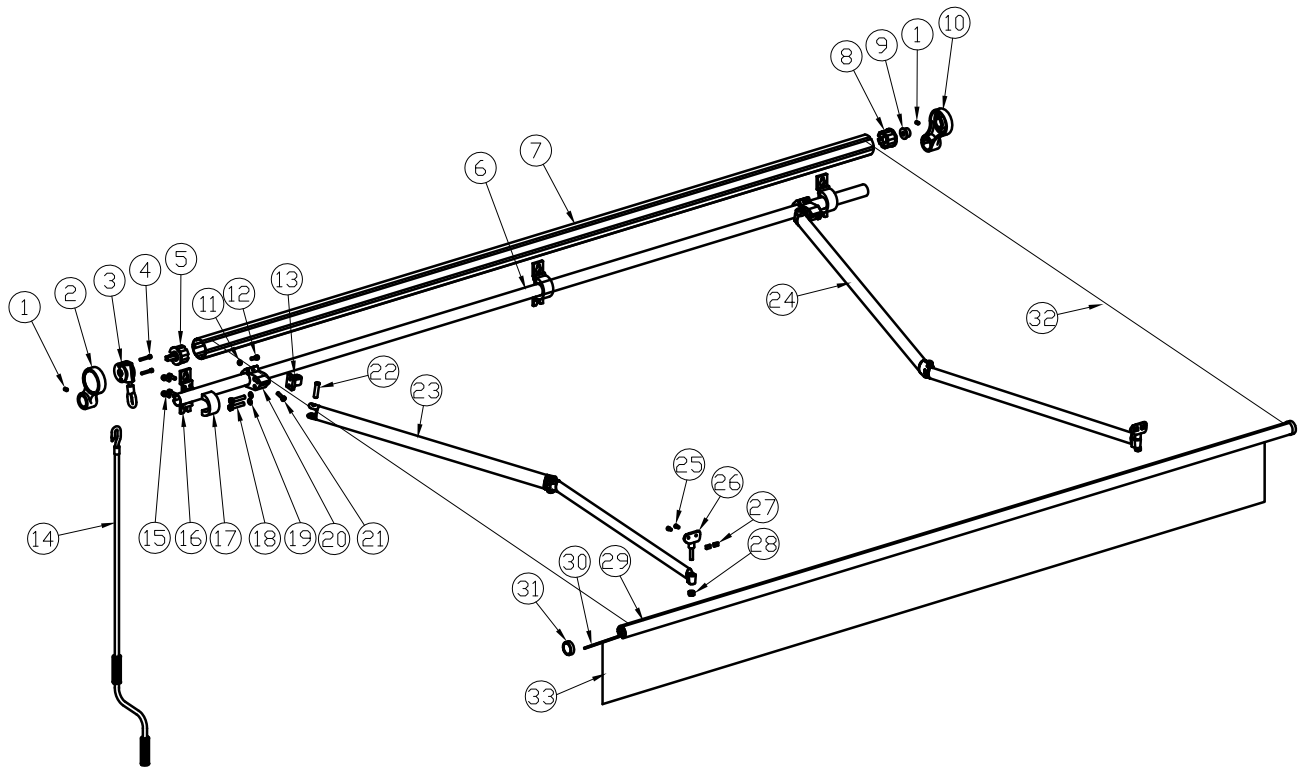


Product EAN

3276007182781
3276007183009
3276007183085
3276007182897
3276007182538
3276007182866
3276007183023
3276000327226



NO.	DESCRIPTION		material	qty
1	SCREW	M8X15	stainless steel	2
2	roller support left	158X118X41	ZL104	1
3	gear box	1/6		1
4	SCREW	M6X40	stainless steel	2
5	square shaft	Φ60X71	PA66+Q235	1
6	Torision bar	Φ40X1.2X 2930mm	A3	1
7	roller	Φ60X1.2X 2845mm	6063-T5	1
8	tube shaft	Φ60X54	PA66+Q235	1
9	large conica	Φ35XΦ12.5X20	PA66	1
10	roller support right	158X118X41	ZL104	1
11	flat gasket	Φ8	stainless steel	12
12	HEXAGON SOCKET HEAD SCRE M8X35		stainless steel	4
13	briquette	48X24X40	ZG270-500	2
14	hand crank	1.6M	STEEL	1
15	HEXAGON SOCKET HEAD SCR M8X25		stainless steel	8
16	brackets part1	153X24X50	6063-T5	2
17	brackets part2	75X43X50	6063-T5	2
18	hexagon bolt	M10X45	stainless steel	4
19	SCREW	Φ10	stainless steel	4
20	arm support	103X68X32	6063-T5	2
21	SCREW	M10X30	stainless steel	2
22	screw	Φ12X43	Q235	2
23	left arm	1900Mm	STEEL	1
24	right arm	1900mm	STEEL	1
25	SCREW	M6X16	stainless steel	4
26	front bar line	89X52X22	ZL104	2
27	SCREW	M6	stainless steel	4
28	SCREW	M10	stainless steel	2
29	FRONT BAR	Φ42X1.2X 2820mm	6063-T5	1
30	fabric plastic line	Φ5.3X2835mm	PA66	3
31	FORN BAR COVER	Φ45X23	PA66	2
33	FLAP	2820X 230mm	240G/M2 POLYSTER	1
32	FABRIC	2820X 2000mm	240G/M2 POLYSTER	1