

Règles de montage et de pose des menuiseries Aluminium Leroy Merlin

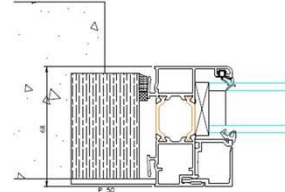
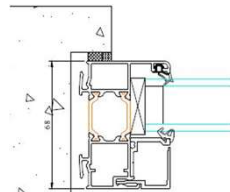
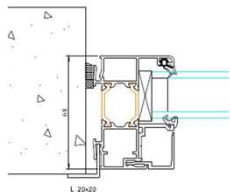
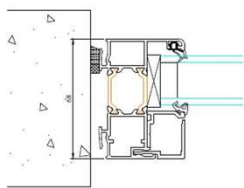
Pose en tunnel:

Pose en tunnel affleurant:

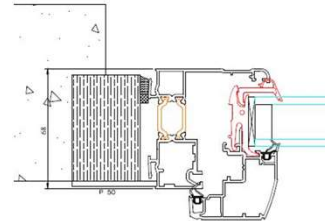
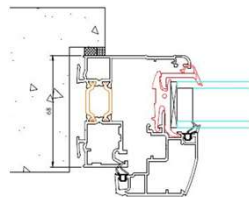
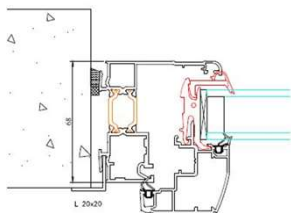
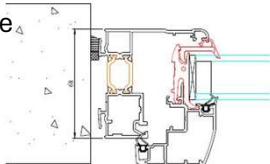
Pose en Feuillure

Pose en Rénovation

Châssis Fixe



Ouvrant Frappe



Règles de montage et de pose des menuiseries Aluminium Leroy Merlin

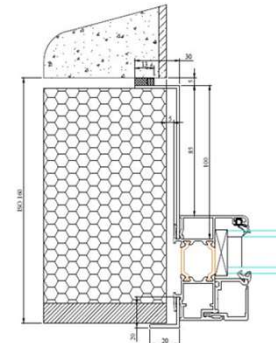
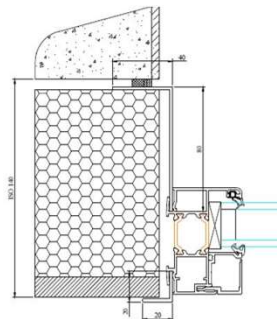
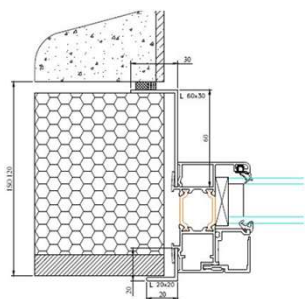
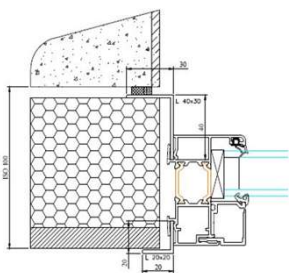
Pose Applique 100mm:

Pose Applique 120mm

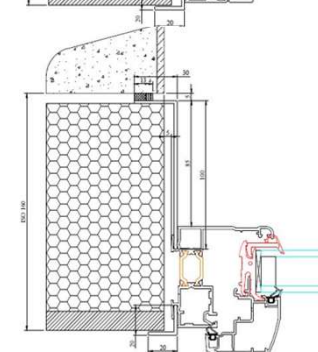
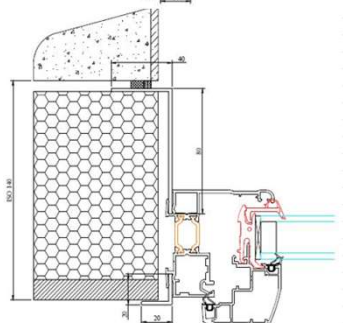
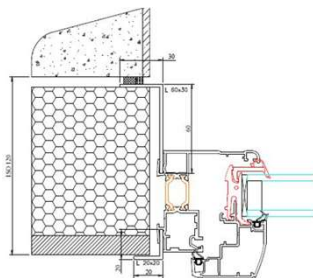
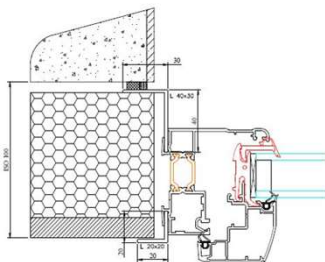
Pose Applique 140mm

Pose Applique 160mm

Châssis Fixe



Ouvrant Frappe



Ouvrant Frappe avec VRI

