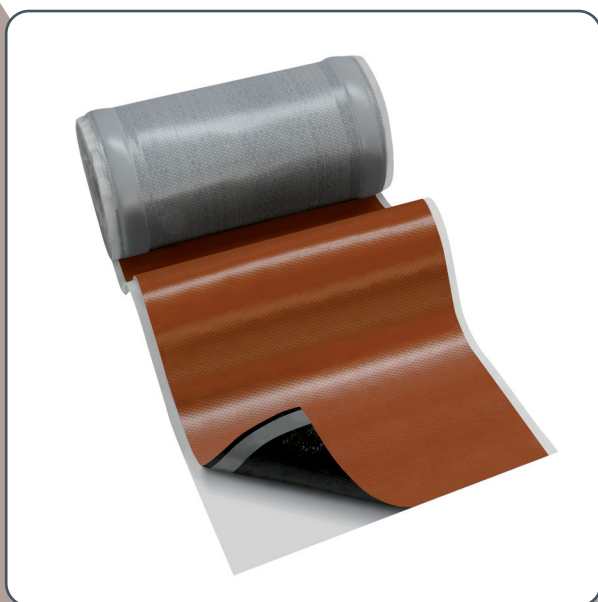


# WAKAFLEX®

*Abutment*

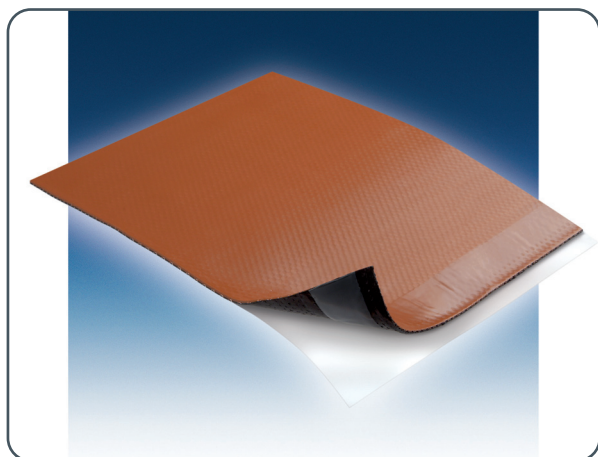


# WAKAFLEX®

## Abutment



# MONIER



WAKAFLEX® a rollable multi layer laminate consisting of Polyisobuthylene (PIB) with aluminium rib mesh insert and butyl strips at the edges.

Wakaflex is the practical approved universal product for professional abutments at chimneys, walls and other rising structures, obtainable in different colours, widths and lengths.

### COLOURS: Lengths 5 m

Available Colours	Widths (mm)			
	180	280	370	560
red	X	X	X	X
brown	X	X	X	
anthracite	X	X	X	X
light grey		X		X
dark blue		X		
dark green		X		
dark red		X		
lead grey		X	X	X

### COLOURS: Lengths 10 m

Available Colours	Widths (mm)		
	180	280	370
red	X	X	
brown	X	X	
anthracite	X	X	
light grey		X	
dark blue		X	
dark green		X	
dark red		X	
lead grey		X	X
copper		X	

### TECHNICAL DATA

Widths	180, 280, 370, 560 mm
Lengths	5 or 10 m
Weight	ca. 3,24 kg / m <sup>2</sup>
Application Temperature	+5° up to +40° Celsius
Stretch Factor	
Lengthwise	approx. 50 %
Crosswise	approx. 15 %
Fire Resistance	Class E

### STORAGE CONDITIONS

- Storage Temperature: +5 °C to +25 °C; for short times up to +40 °C (risk of butyl softening and difficulties to release protective foil)
- Prevent exposure to direct sunlight and moisture or rain
- Keep transport boxes and rolls covered and sheltered
- Rolls must be stored in upright position

For further information please contact or visit:  
**Monier Roofing Components GmbH & Co. KG,**  
 Frankfurter Landstrasse 2-4, D-61440 Oberursel  
[www.monier.com](http://www.monier.com)