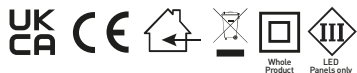


### ECO BACKLIT PANEL FIXED OUTPUT

LES66W40LN-01



**Non-User Replaceable Light source:** The Light source contained in this luminaire shall only be replaced by the manufacturer or their service agent or similar qualified person.

#### ASSEMBLY AND INSTALLATION

- If the external flexible cable or cord of this luminaire is damaged, it shall be exclusively replaced by the manufacturer or his service agent or a similar qualified person in order to avoid a hazard
- The light source of this luminaire is not replaceable; when the light source reaches its end of life the whole luminaire shall be replaced
- Minimum basic insulation between power and control (DaI) provided. Always maintain supplementary insulation between low voltage supply and control conductors
- Suitable for use with mains voltage of 220-240VAC
- This product must be disconnected before insulation resistance testing of the lighting circuit
- For emergency options, please use Luceco "plug and play" Emergency Pack
- Minimum basic insulation between power and control (DaI) provided. Always maintain supplementary insulation between low voltage supply and control conductors
- If the external flexible cable or cord of this luminaire is damaged, it shall be exclusively replaced by the manufacturer or his service agent or a similar qualified person in order to avoid a hazard

#### ZUSAMMENBAU UND INSTALLATION **DE**

- Verwendbar mit einer Netzspannung von 220-240VAC
- Dieses Produkt muss, vor der Messung des Isolationswiderstandes, von der Stromversorgung getrennt werden
- Für eine optionale Notstromversorgung, verwenden Sie bitte die LUCECO-Notstromversorgung

#### ASSEMBLAGE ET INSTALLATION **FR**

- Ce luminaire ne peut être utilisé qu'avec une tension secteur de 220-240VAC
- Déconnectez le produit avant de tester la résistance d'isolation du circuit
- Pour la fonction Urgence, merci d'utiliser le pack Luceco "plug & play"

#### MONTAJE E INSTALACIÓN **ES**

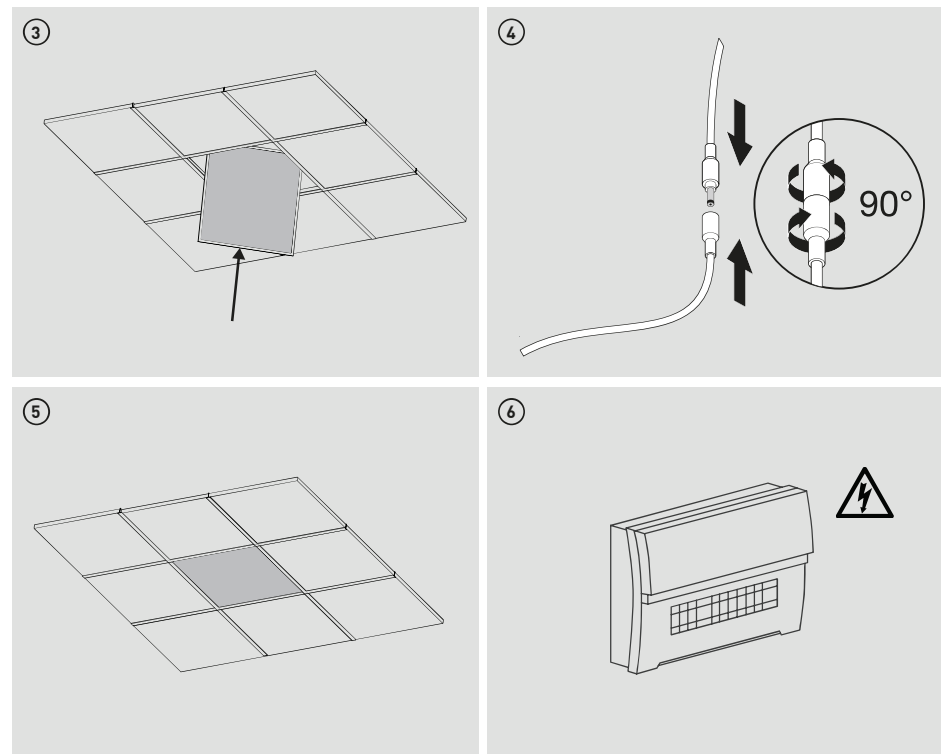
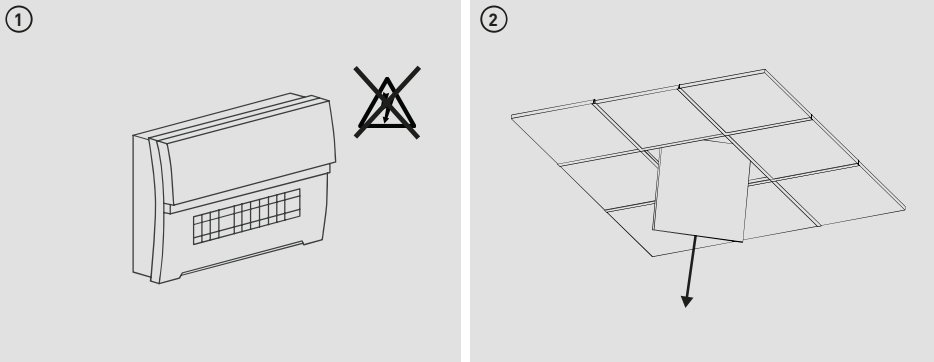
- Apto para voltajes de 220-240VAC
- Este producto debe ser desconectado del circuito de iluminación antes del test de aislamiento y resistencia
- Para necesidades con emergencia, utilice nuestro Pack de Emergencia "Plug & Play"

#### MONTAGGIO E INSTALLAZIONE **IT**

- Adatto per l'uso con tensione di rete a 220-240VAC
- Assicuratevi che il montaggio e il cavo d'ingresso accessorio siano adeguati al fine di mantenere la protezione del prodotto
- Per le opzioni di emergenza, si prega di utilizzare Luceco "plug and play" emergenza pack

#### MONTAGEM E INSTALAÇÃO **PT**

- Adequado para tensões de 220-240VAC
- Este produto deve ser desconectado do circuito de iluminação antes do teste de isolamento e resistência
- Para necessidades de emergência, use nosso pacote de emergência "Plug and Play"



Tech Help Line  
UK - 0330 0249 279  
Non UK - +44 (0)1952 238 100  
Supplied by LUCECO  
Stafford Park 1, Telford, Shropshire,  
England, TF3 3BD  
Visit our website at [www.luceco.com](http://www.luceco.com)

Servicio de asistencia telefónica  
UK - 0330 0249 279  
Non UK - +34 93 829 55 74  
(EU) Luceco SE  
C/ Bobinadora 1-5  
08302 Mataró Spain  
Visite nuestra web en [www.luceco.com](http://www.luceco.com)

Tech Help Line  
UK - 0330 0249 279  
Non UK - +44 (0)1952 238 100  
Supplied by LUCECO  
Stafford Park 1, Telford, Shropshire,  
England, TF3 3BD  
Visit our website at [www.luceco.com](http://www.luceco.com)

Servicio de asistencia telefónica  
UK - 0330 0249 279  
Non UK - +34 93 829 55 74  
(EU) Luceco SE  
C/ Bobinadora 1-5  
08302 Mataró Spain  
Visite nuestra web en [www.luceco.com](http://www.luceco.com)