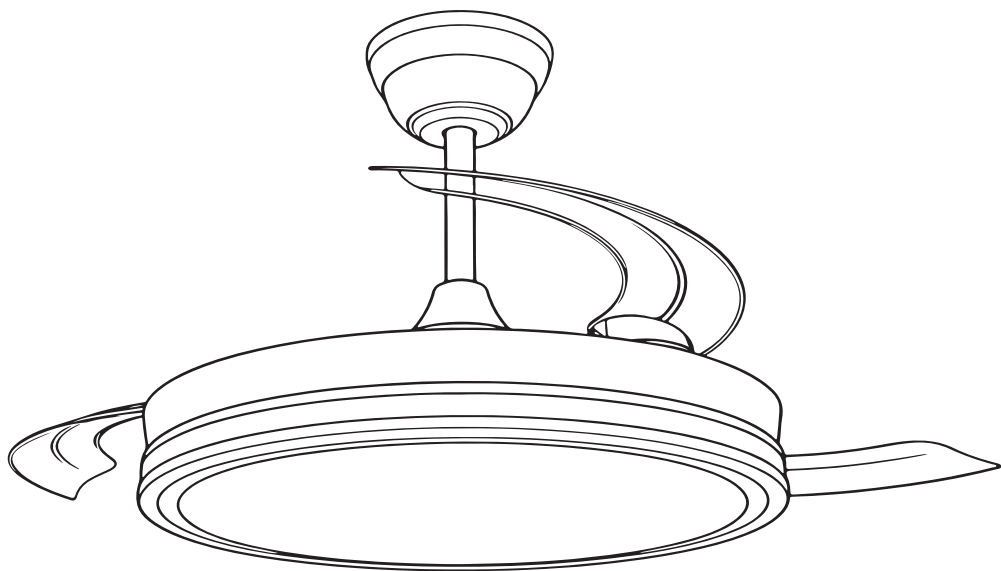


Installation Manual

> VENTILADOR DE TECHO



LORA

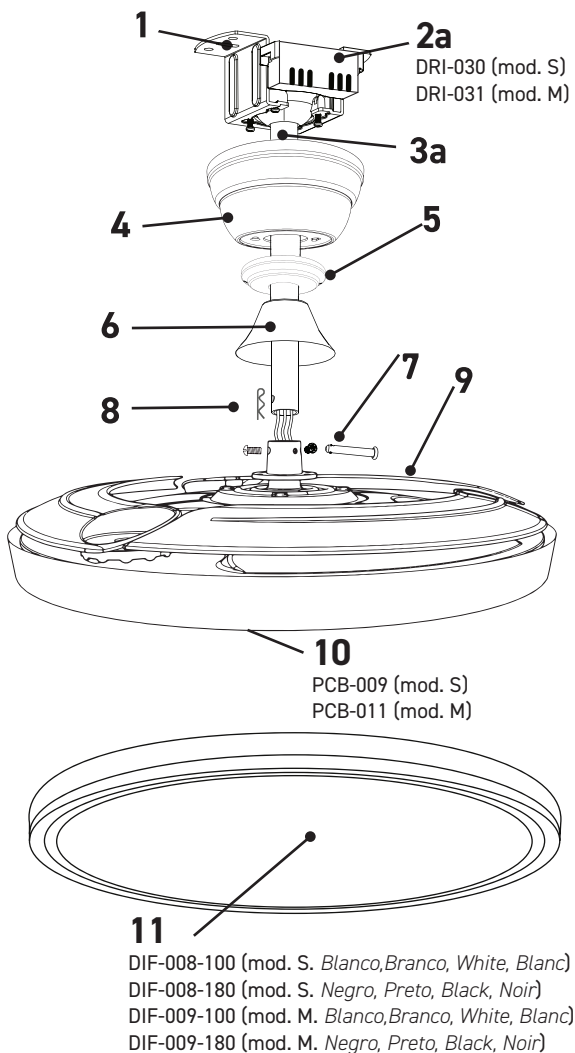
► PARTES DEL VENTILADOR

► PEÇAS DO VENTILADOR

► FAN PARTS

► PIÈCES DE VENTILATEU

1. Soporte de montaje
Suporte de montagem
Mounting bracket
Support de montage
2. Receptor y mando
Receptor e controlo
Receiver and remote control
Récepteur et télécommande
3. Tija con bola de suspensión
Espigão com bola de suspensão
Downrod and suspension ball
Tige à boule de suspension
4. Florón / Canope / Canopy / Fleuron
5. Aro decorativo / Anel decorativo
Decorative ring / Anneau décoratif
6. Embellecedor / Acabamento decorativo
Trim / Garniture décorative
7. Pasador / Clipe de segurança
Locking pin / Goupille de verrouillage
8. Clip de seguridad / Presilha
Security clip / Clip de sécurité
9. Motor / Moteur
10. Fuente de luz / Fonte de luz
Light source / Source de lumière
11. Difusor / Diffuser / Diffuseur
12. Tornillos
Parafusos
Screws
Vis



DRI-030 (mod. S)

DRI-031 (mod. M)

PCB-009 (mod. S)

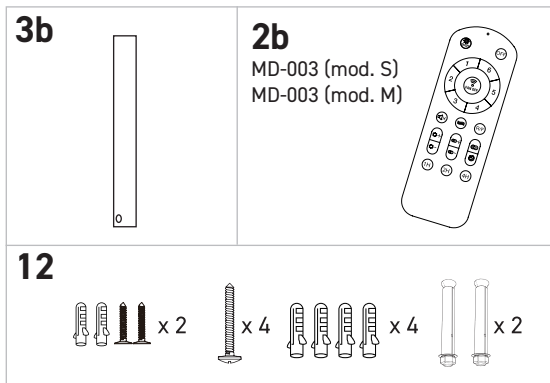
PCB-011 (mod. M)

DIF-008-100 (mod. S. Blanco, Branco, White, Blanc)

DIF-008-180 (mod. S. Negro, Preto, Black, Noir)

DIF-009-100 (mod. M. Blanco, Branco, White, Blanc)

DIF-009-180 (mod. M. Negro, Preto, Black, Noir)

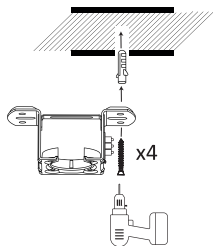


► INSTALACIÓN DEL VENTILADOR

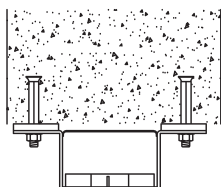
► INSTALAÇÃO DO VENTILADOR ► FAN INSTALLATION

► INSTALLATION DU VENTILATEUR

Instalación del soporte de montaje / Instalação do suporte de montagem Installing the mounting bracket / Installation du support de montage

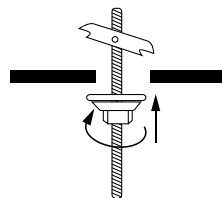


Techo forjado / Tecto forjado
Forged ceiling / Plafonds forgés



Techo de hormigón
Tecto de betão / Concrete ceiling
Plafond de béton

No incluido / Não incluído
Not included / Non inclus



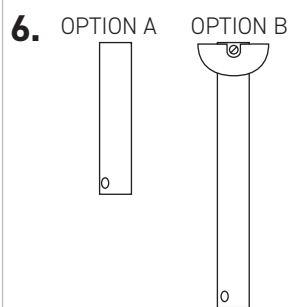
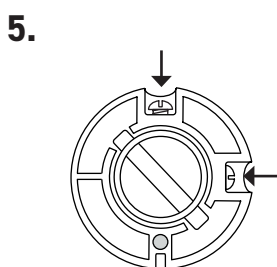
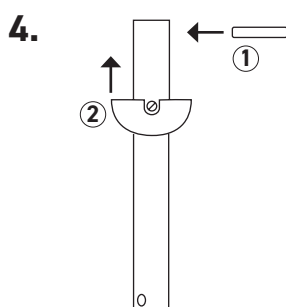
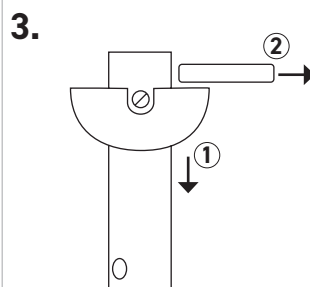
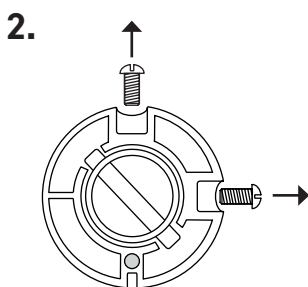
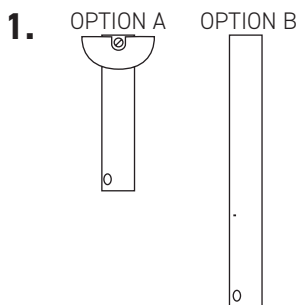
Falso techo / Falsos tectos
False ceiling / Faux plafond

Cambio de la tija en la bola de suspensión

Troca do espigão do selim com a esfera de suspensão

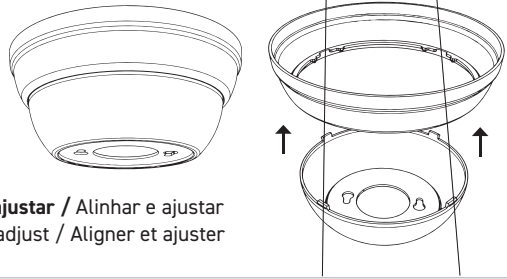
Changing the seat post with the suspension ball

Changement de la tige de selle avec la boule de suspension



Montaje del florón

Montagem do canope
Assembly of the canopy
Montage du fleuron

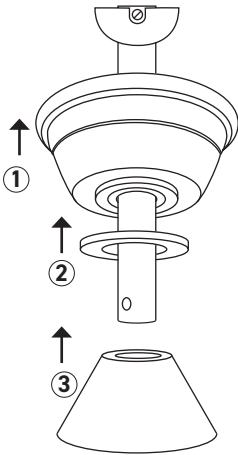


Alinear y ajustar / Alinhar e ajustar
Align and adjust / Aligner et ajuster

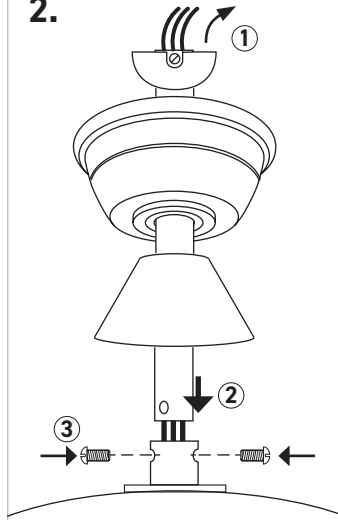
Montaje de los elementos del ventilador

Montagem dos elementos do ventilador
Assembly of the fan components
Montage des éléments du ventilateur

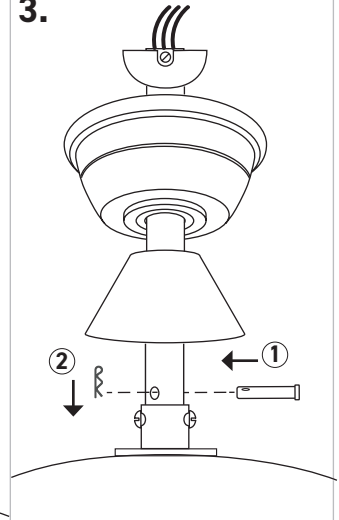
1.



2.



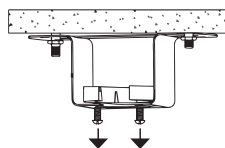
3.



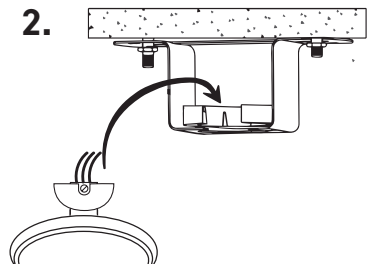
Colgar el ventilador

Pendurar o ventilador
Hang the fan
Pendure o ventilador

1.



2.

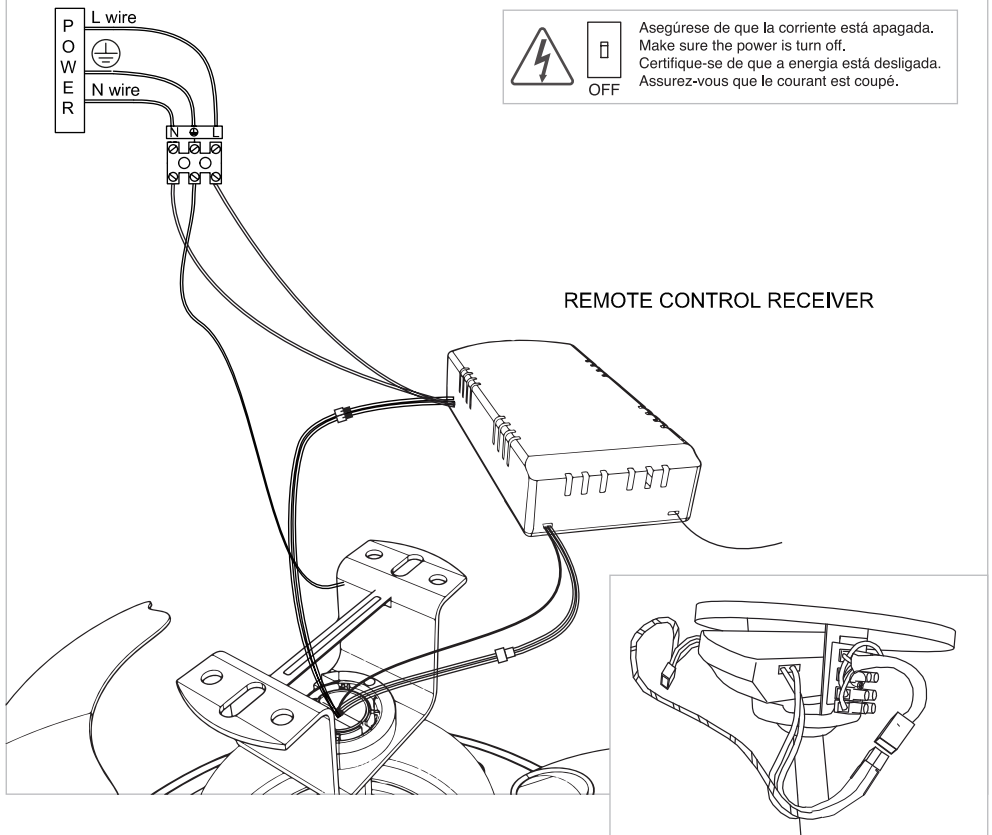


Conectar los cables

Conectar os cabos

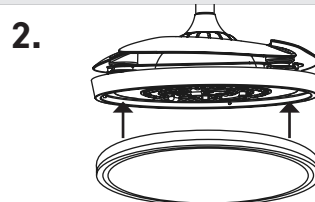
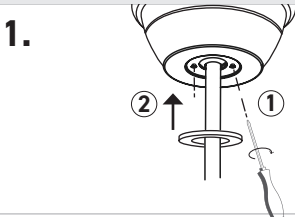
Connect the cables

Vonnecter les câbles



Fijación del florón y del difusor / Colocação do florão e do difusor

Installation of the rosette and diffuser / Installation du rosace et du diffuseur



> FUNCIONAMIENTO DEL MANDO

> FUNCIONAMENTO DE CONTROLO REMOTO

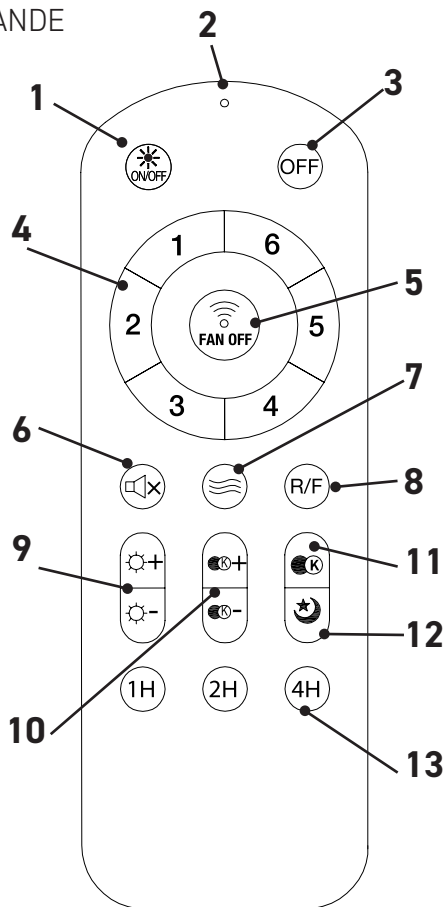
> REMOTE CONTROL OPERATION

> FONCTIONNEMENT DE LA TÉLÉCOMMANDE

2x AAA



1. Encender y apagar la luz
Ligar e desligar a luz
Turn light on/off
Allumer et éteindre la lumière
2. Luz indicador / Luz indicadora
Indicator light / Voyant lumineux
3. Apagar todo / Desligar tudo
Turn everything off / Tout éteindre
4. Velocidades / Speeds / Vitesses
5. Emparejamiento. Apagar ventilador
Emparelhamento. Desligar ventilador
Pairing. Turn fan off
Appairage. Éteindre le ventilateur
6. Bip on/off / Beep on/off / Bip on/off
7. Aire natural / Ar natural
Natural air / Air naturel
8. Función verano-invierno
Função verão-inverno
Summer-winter function / Fonction été-hiver
9. +/- luminosidad / luminosidade
brightness / luminosité
10. Ajuste gradual de la temperatura de la luz
Ajuste gradual da temperatura da luz
Gradual light temperature adjustment
Réglage progressif de la lumière
11. 6000/3000/4000K
12. Luz nocturna / Night light / Veilleuse
13. Temporizador / Timer / Minuteur



> **Emparejamiento:** El mando viene sincronizado con el ventilador de fábrica. En caso de perder la sincronización, encienda el ventilador desde el interruptor de la pared y pulse el botón "5" manteniendo la luz intermitente y el pitido durante 5 seg. Para desemparejar pulse el interruptor de la pared apagando y encendiendo 12 veces.

> **Emparelhamento:** O controle remoto vem sincronizado com o ventilador de fábrica. Caso perca a sincronização, ligue o ventilador pelo interruptor de parede e pressione o botão "5" mantendo a luz piscando e o bip por 5 seg. Para desincronizar, pressione o interruptor de parede ligando e desligando 12 vezes.

> **Pairing:** The remote control comes pre-sync'd with the fan from the factory. If the synchronization is lost, turn on the fan using the wall switch and press the "5" button, holding it until the light flashes and the beep sounds for 5 seconds. To unpair, turn the wall switch off and on 12 times.

> **Appairage:** La télécommande est synchronisée avec le ventilateur en usine. En cas de perte de synchronisation, allumez le ventilateur à l'aide de l'interrupteur mural et appuyez sur le bouton "5", en maintenant la lumière clignotante et le bip sonore pendant 5 secondes. Pour désappairer, éteignez et rallumez l'interrupteur mural 12 fois.