

## Assembly Instructions / Instrucciones De Montaje

**Assembly Steps:**

- Step 1:** Attach the main ring (B) and diffuser (B1) to the base (B2).
- Step 2:** Attach the motor housing (C) to the base (B2) using screws (G).
- Step 3:** Attach the light cage (A) to the motor housing (C) using clips (H).
- Step 4:** Final assembly, securing the light cage (A) and diffuser (B1) to the motor housing (C) using screws (I) and a central screw (K).

**Parts List:**

- E:** 4 screws
- F:** 4 screws
- G:** 4 screws
- H:** 4 clips
- I:** 8 screws
- J:** 4 screws
- K:** 1 screw

## Assembly Instructions / Instrucciones De Montaje

**5**

**6**

**7**

**8**

**9**

**10**

**11**

**D**

**J**

**F**

**B1**

**K**

**219mm**  
m. extra

**6-10mm**

**220-240V~**

**N**

**L**

**INSTALAR**

**MOTOR 30W**  
**LED 75W 2700K-5000K 5000lm**  
**220-240V~ 50/60Hz**

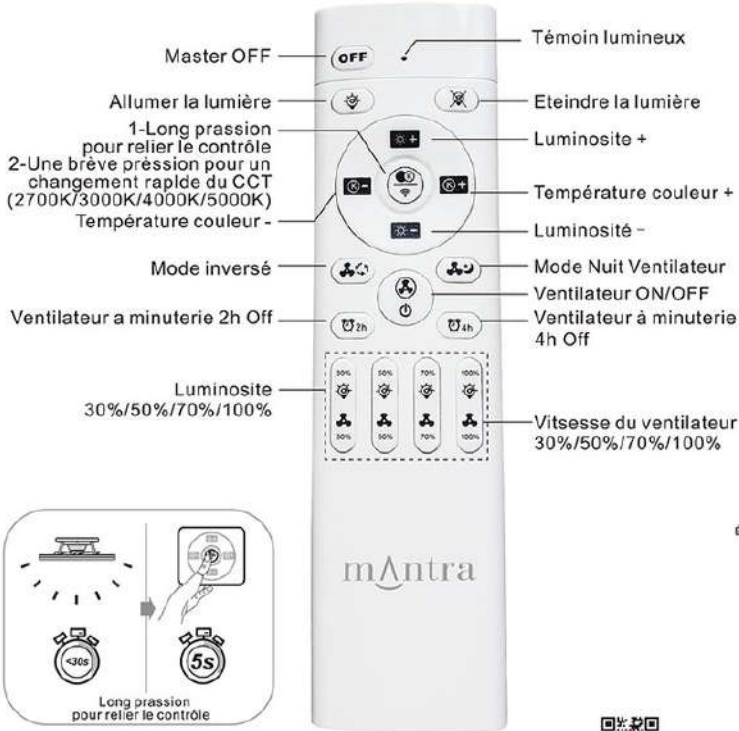
**E**

ES: Este producto contiene una fuente luminosa de la clase de eficiencia energética E.  
 EN: This product contains a light source of energy efficiency class E.  
 FR: Ce produit contient une source lumineuse de classe d'efficacité énergétique E.  
 DE: Dieses Produkt enthält eine Lichtquelle der Energieeffizienzklasse E.  
 IT: Questo prodotto contiene una sorgente luminosa di classe di efficienza energetica E.  
 NL: Dit product bevat een lichtbron van energie-efficiëntieklasse E.  
 SV: Denna produkt innehåller en ljuskälla av energieeffektivitetsklass E.  
 CZ: Tento výrobek obsahuje světelný zdroj třídy energetické účinnosti E.  
 SK: Tento výrobok obsahuje svetelný zdroj triedy energetickej účinnosti E.  
 RO: Acest produs conține o sursă de lumină de clasă de eficiență energetică E.  
 PT: Este produto contém uma fonte de luz de classe de eficiência energética E.

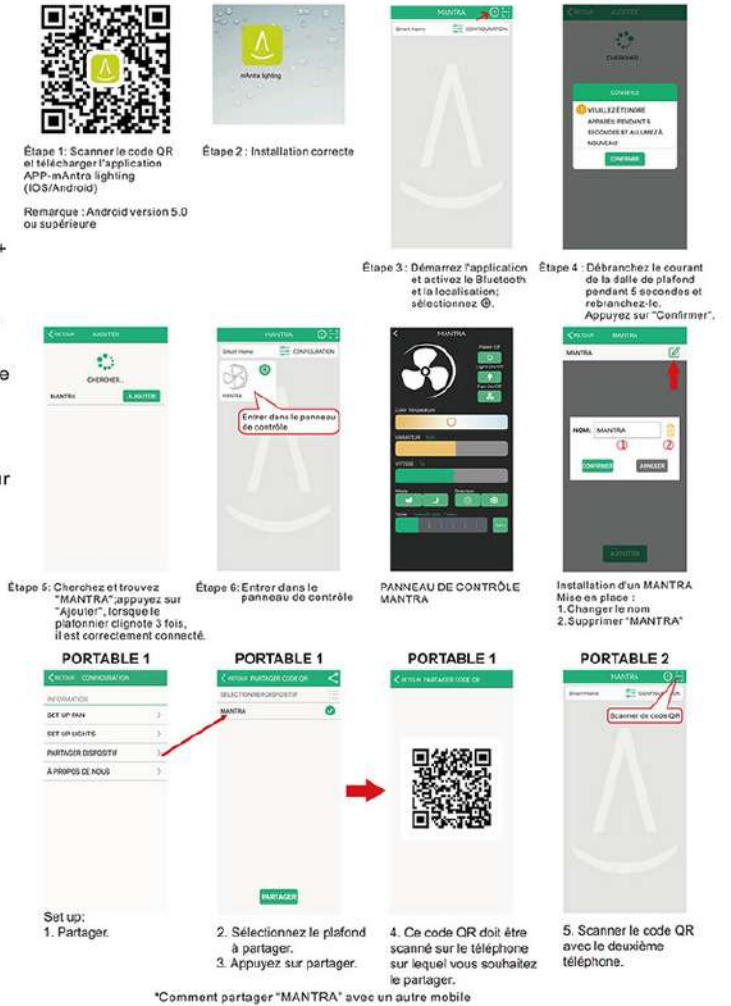
**REF.:**  
**7807/7808/7809**

**mAntra**

## ISTRUZIONI RELATIVE ALLA TELÉCOMMANDE

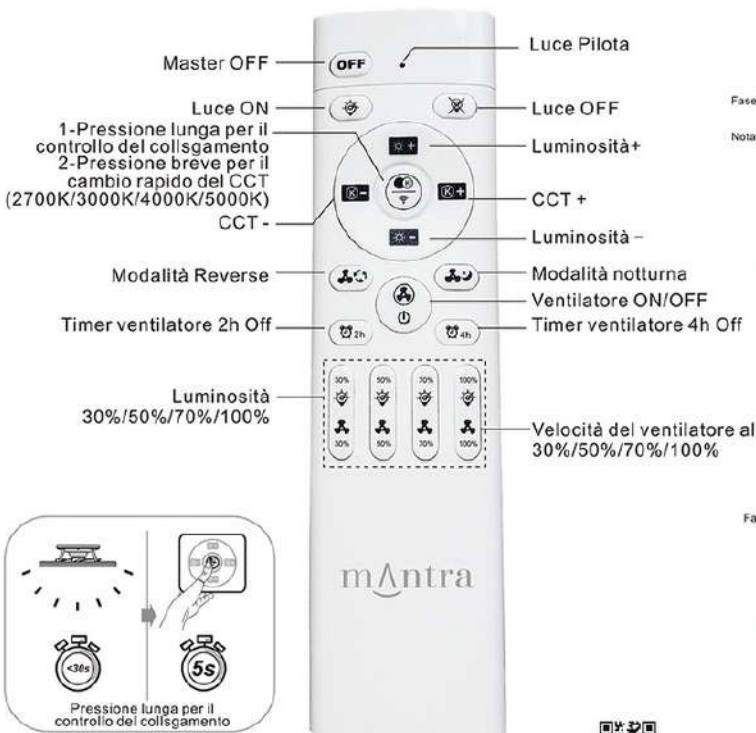


## MODE D'EMPLOI APP MANTRA LIGHTING

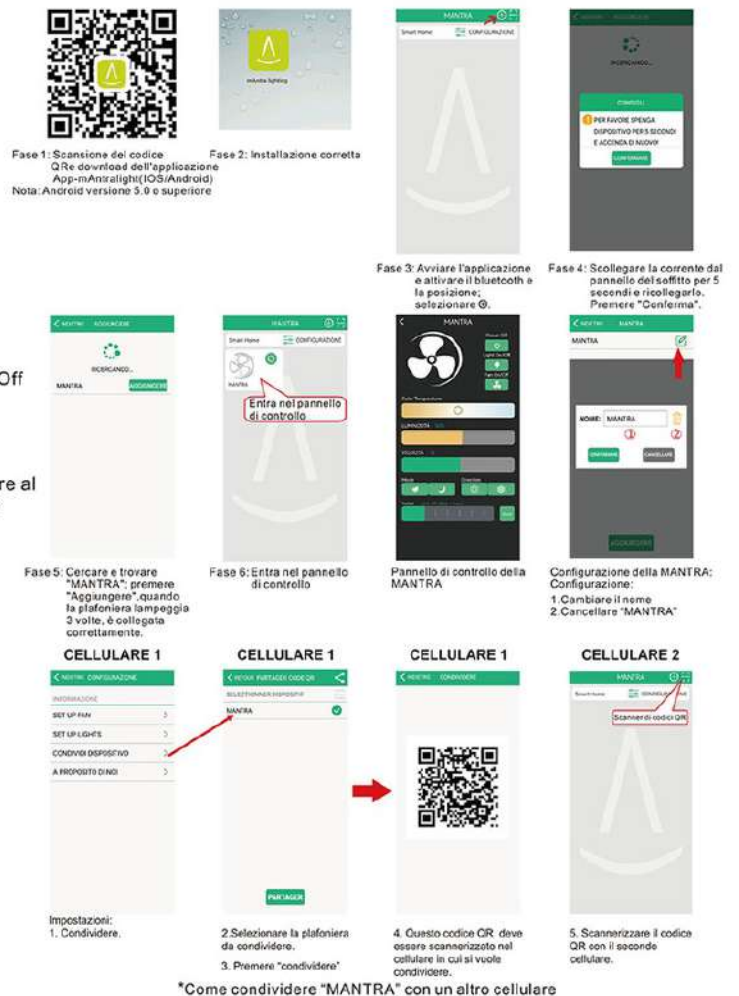


mantra

## MANUALE PER IL CONTROLLO A DISTANZA



## APP MANTRA ILLUMINAZIONE



mantra