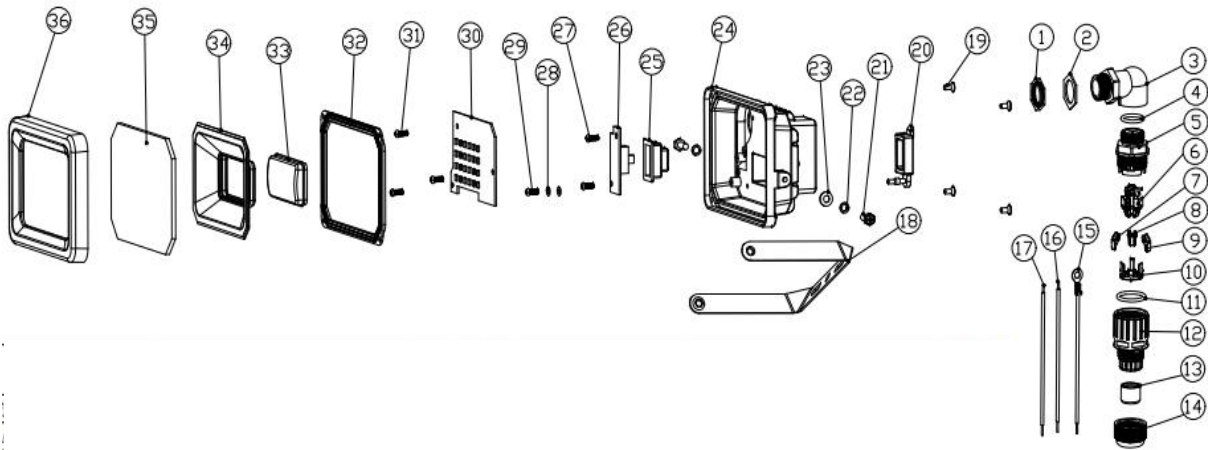


# 8810 CCT product Exploded view



Serial number	Material Name	Specifications and materials	unit	Dosage
1	Waterproof connector hexagonal thin nut	M16*1.5Opposite side 19mmGalvanized iron	individual	1
2	PA9Elbow quick connect hexagonal washer	White Silicone	individual	1
3	New plug-in quick-connect elbow	PCDark Gray RAL7016New mold	Only	1
4	New plug-in quick connectorOType ring	Black SiliconeNew mold	individual	1
5	New plug-in quick-connect body	Enhancement PA6Dark Gray RAL7016New mold	Only	1
6	New plug-in quick-connect spring	Dimensions see drawing	individual	3
7	New quick-connect pull tabs	Brown Enhancement PA6New mold	Only	1
8	New quick-connect pull tabs	Yellow Enhancement PA6New mold	Only	1
9	New quick-connect pull tabs	Blue Enhancement PA6New mold	Only	1
10	New plug-in quick-connect terminal block	Enhancement PA6Dark Gray RAL7016New mold	Only	1
11	New plug-in quick-connect sleeveOType ring	Black SiliconeNew mold	individual	1
12	New plug-in quick-connect sleeve	Enhancement PA6Dark Gray RAL7016New mold	Only	1
13	PA9Elbow quick connect wire cover	Black Silicone	individual	1
14	New quick-connect nut	Enhancement PA6Dark Gray RAL7016New mold	Only	1
15	Yellow-green silicone grounding wire	0.5mm2*12CMpeel3mmImmersion Tin+3.2Coil	root	1

16	redPVCWire	0.5mm2*10CMpeel3mmlImmersion Tin+4.8mmLong copper ferrule	root	1
17	bluePVCWire	0.5mm2*10CMpeel3mmlImmersion Tin+4.8mmLong copper ferrule	root	1
18	8810Light head bevel fixing bracket	Fine matte dark grayRAL7016	Only	1
19	Cross countersunk screw	M3*6Stainless steel	Pellet	4
20	8810CCTSilicone plug	Dark GrayRAL7016Silicone	individual	1
21	Cross hexagon screw	M4*10Stainless steel	Pellet	2
22	Spring pad	Φ4Stainless steel spring washers	Pellet	2
23	Flat Washer	Φ4Stainless steel flat washers	Pellet	2
24	8810 CCTLamp body	ADC12openΦ16hole+Switch hole fine matte dark grayRAL7016	Only	1
25	8810CCTSilicone cap	White Silicone	individual	1
26	Switch PlateTL88XXCCT-KV0.1	TL88XXCCT-KV0.1	piece	1
27	Cross pan head screw	M3*5	Pellet	2
28	Tooth pad	Φ3	individual	2
29	Cross pan head screw	M3*5	Pellet	1
30	Light BoardTL8810D CCTV1.0	TL8810D CCTV1.0	piece	1
31	Cross pan head screw	M3*5	Pellet	3
32	8810Glass seal	White Silicone	individual	1
33	8810Diffuser	diffusionPC 05545(Jinrun)	Only	1
34	8810Nano reflective sheet	PCWhite 0.5mm	Only	1
35	6820tempered glass	KiyomitsuDimensions see drawing	piece	1
36	8810Light frame	ADC12Fine matte dark grayRAL7016	Only	1