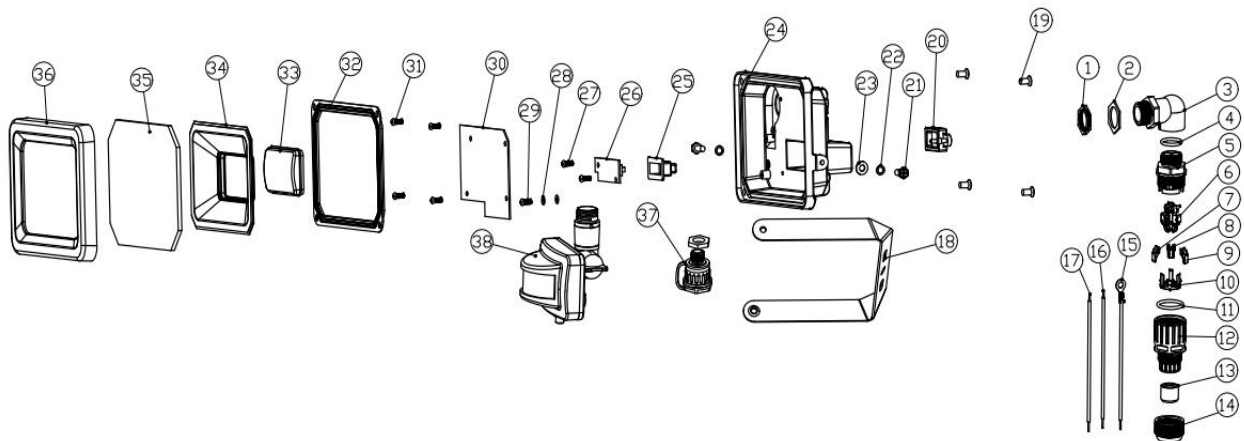


8820T-2CA CCT product Exploded view



Serial number	Material Name	Specifications and materials	oneBit	usequantity
1	Waterproof connector hexagonal thin nut	M16*1.5 Opposite side 19mmGalvanized iron	individual	1
2	PA9 elbow quick connect hexagonal	White Silicone	individual	1
3	New plug-in quick-connect elbow	PCDark GrayRAL7016New mold	Only	1
4	New plug-in quick-connect O-ring	Black silicone new mold	individual	1
5	New plug-in quick-connect body	EnhancementPA6 Dark GrayRAL7016 New mold	Only	1
6	New plug-in quick-connect spring	Dimensions see drawing	individual	3
7	New quick-connect pull tabs	Brown EnhancementPA6 New mold	Only	1
8	New quick-connect pull tabs	Yellow EnhancementPANew mold	Only	1
9	New quick-connect pull tabs	Blue EnhancementPA6 New mold	Only	1
10	New plug-in quick-connect terminal block	EnhancementPA6 Dark GrayRAL7016 New mold	Only	1
11	New plug-in quick-connect sleeve O-ring	Black silicone new mold	individual	1
12	New plug-in quick-connect sleeve	EnhancementPA6 Dark GrayRAL7016 New mold	Only	1
13	PA9 elbow quick connect wire cover	Black Silicone	individual	1
14	New quick-connect nut	EnhancementPA6 Dark GrayRAL7016 New mold	Only	1
15	Yellow-green silicone grounding wire	0.5mm2*13CMStrip 3mmImmersion tin + 3.2 coil	root	1
16	redPVCWire	0.5mm2*10CMStrip 3mmImmersion Tin+4.8mmLong copper ferrule	root	1
17	bluePVCWire	0.5mm2*13.5CMStrip 3mmImmersion Tin+4.8mmLong copper ferrule	root	1
18	Bevel Fixing Bracket	Fine matte dark grayRAL7016	Only	1
19	Cross countersunk screw	M4*10 stainless steel	Pellet	4
20	Silicone plug	Dark GrayRAL7016 Silicone	individual	1
21	Cross hexagon screw	M4*10 stainless steel	Pellet	2
22	Spring pad	Φ4 stainless steel spring washer	Pellet	2
23	Flat Washer	Φ4 stainless steel flat washer	Pellet	2
24	Lamp body	ADC12 Φ16 hole + switch hole + semicircular hole fine frosted dark	Only	1

25	Silicone cap	White Silicone	individual	1
26	Switch Plate	TL88XXCCT-KV0.1	piece	1
27	Cross pan head screw	M3*5	Pellet	2
28	Tooth pad	Φ3	individual	2
29	Cross pan head screw	M3*5	Pellet	1
30	Light BoardTL8810DPIRCCTV1.0	TL8820DPIRCCTV1.0	piece	1
31	Cross pan head screw	M3*5	Pellet	4
32	glass seal	White Silicone	individual	1
33	diffusion cover	diffusionPC05545 (Jinrun)	Only	1
34	nanometer reflective sheet	PCWhite0.5mm	Only	1
35	tempered glass	See drawing for clear dimensions	piece	1
36	Light Frame	ADC12 Fine matte dark grayRAL7016	Only	1
37	induction socket	Dark GrayRAL7016 with anti-lost sealing pad + nut with exposed wire 10CMLength +3PZH1.5 Plug	set	1
38	Sensor	Dark GrayRAL7016	set	1