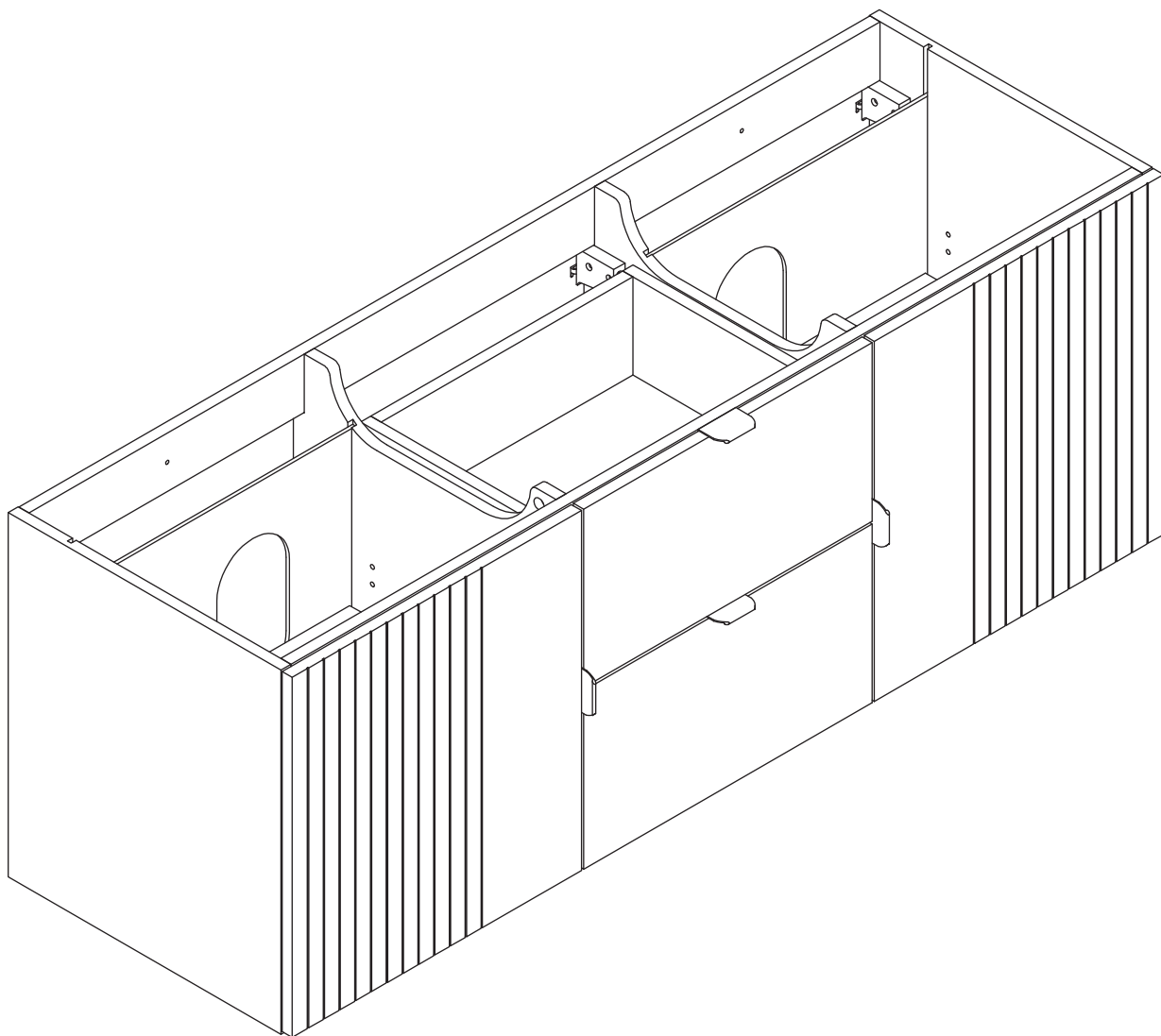
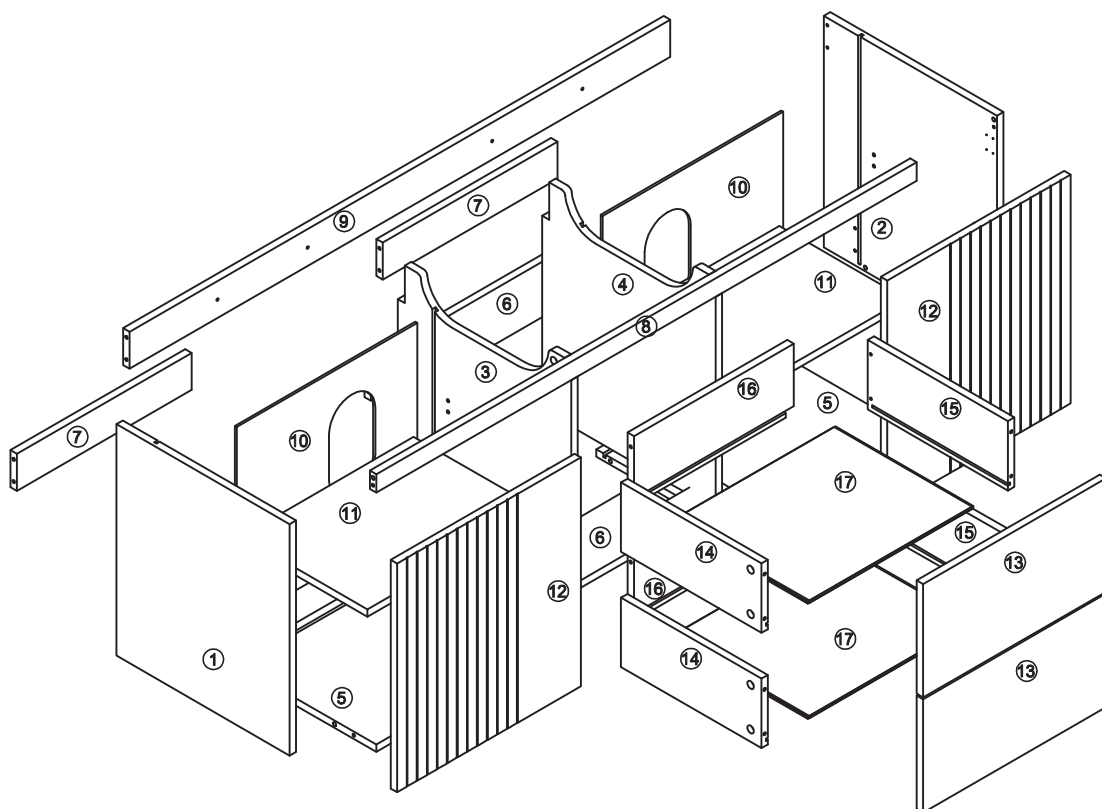
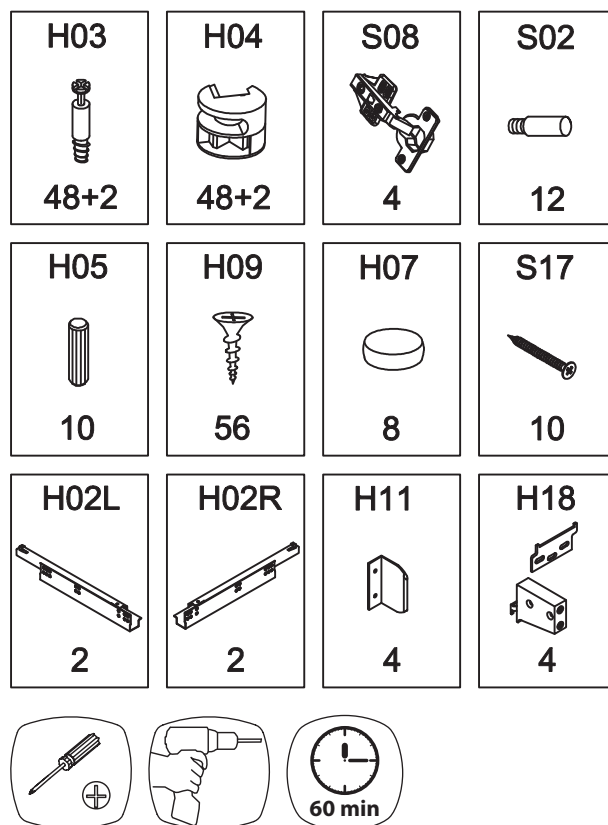


# Meuble sous vasque



Piece No.	Quantité	Désignation
1	1	Flanc gauche
2	1	Flanc droit
3	1	Séparateur central gauche
4	1	Séparateur central droite
5	2	Dessous
6	2	Traverse arrière
7	2	Traverse arrière haute
8	1	Traverse avant
9	1	Traverse arrière haute
10	2	Fond
11	2	Etagères
12	2	Portes
13	2	Façades tiroirs
14	2	Côtés gauches tiroirs
15	2	Côtés droits tiroirs
16	2	Arrières tiroirs
17	2	Fonds tiroirs

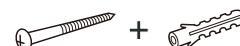


NE PAS S'ASSEOIR SUR  
LE MEUBLE SUSPENDU



UTILISEZ LES VIS ET LES  
CHEVILLES ADAPTÉES  
A VOS MURS


Attention !  
Ce meuble doit être fixé au mur.  
Utilisez des vis et des chevilles adaptées  
au matériau de votre mur ( non incluses ).  
En cas de doute, demandez conseil à  
un vendeur.



CHARGE MAX. 60 KG

1

H03




8

H09



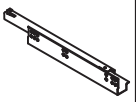
24

S17



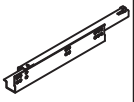
4

H02L




2

H02R

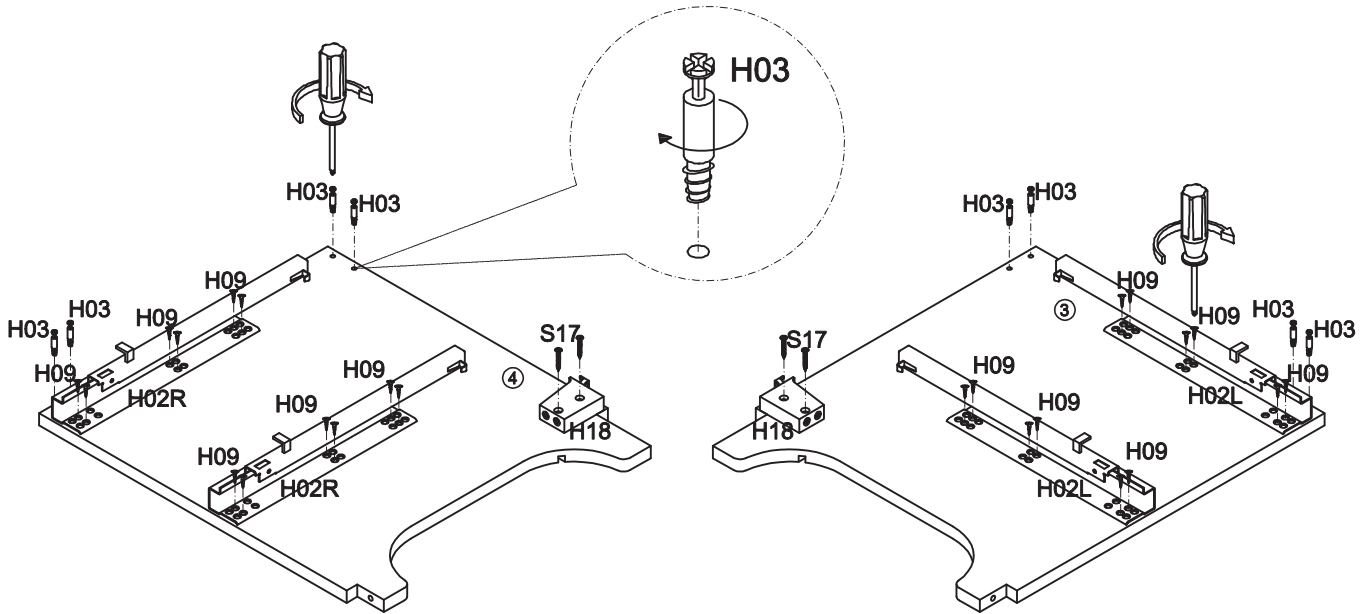


2

H18



2

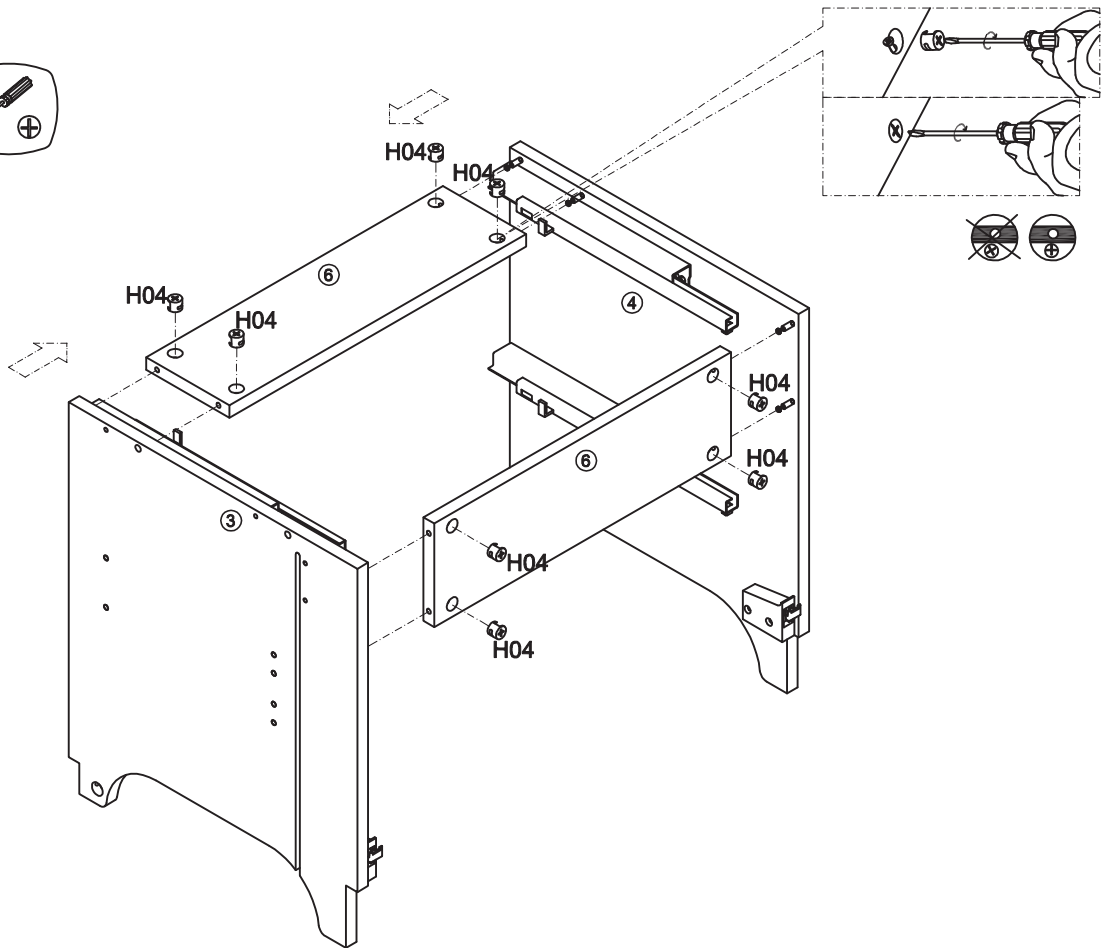


2

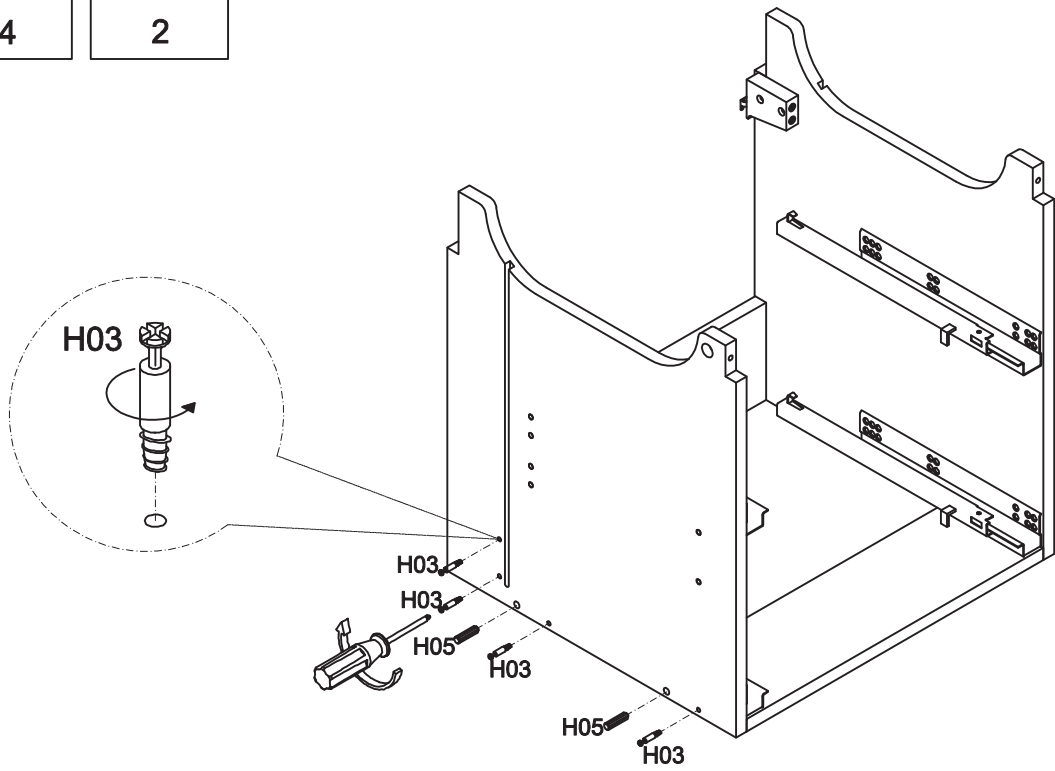
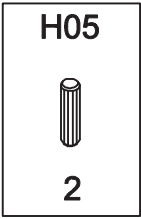
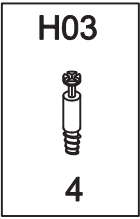
H04



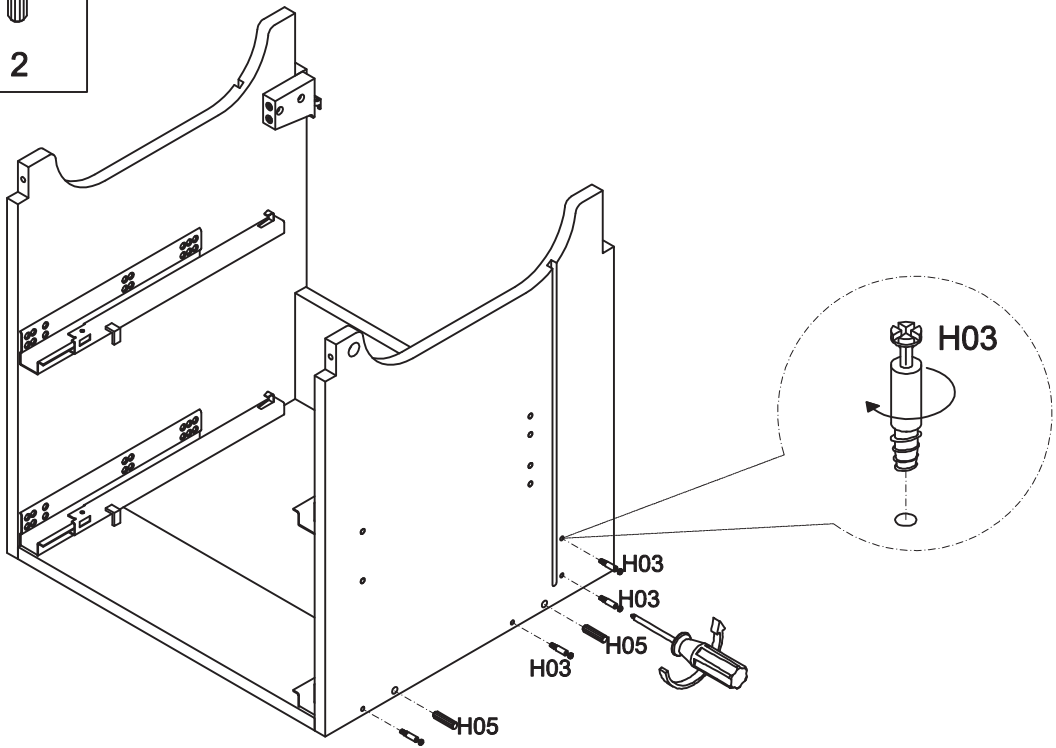
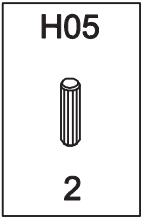
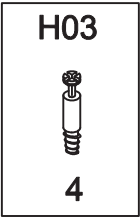
8



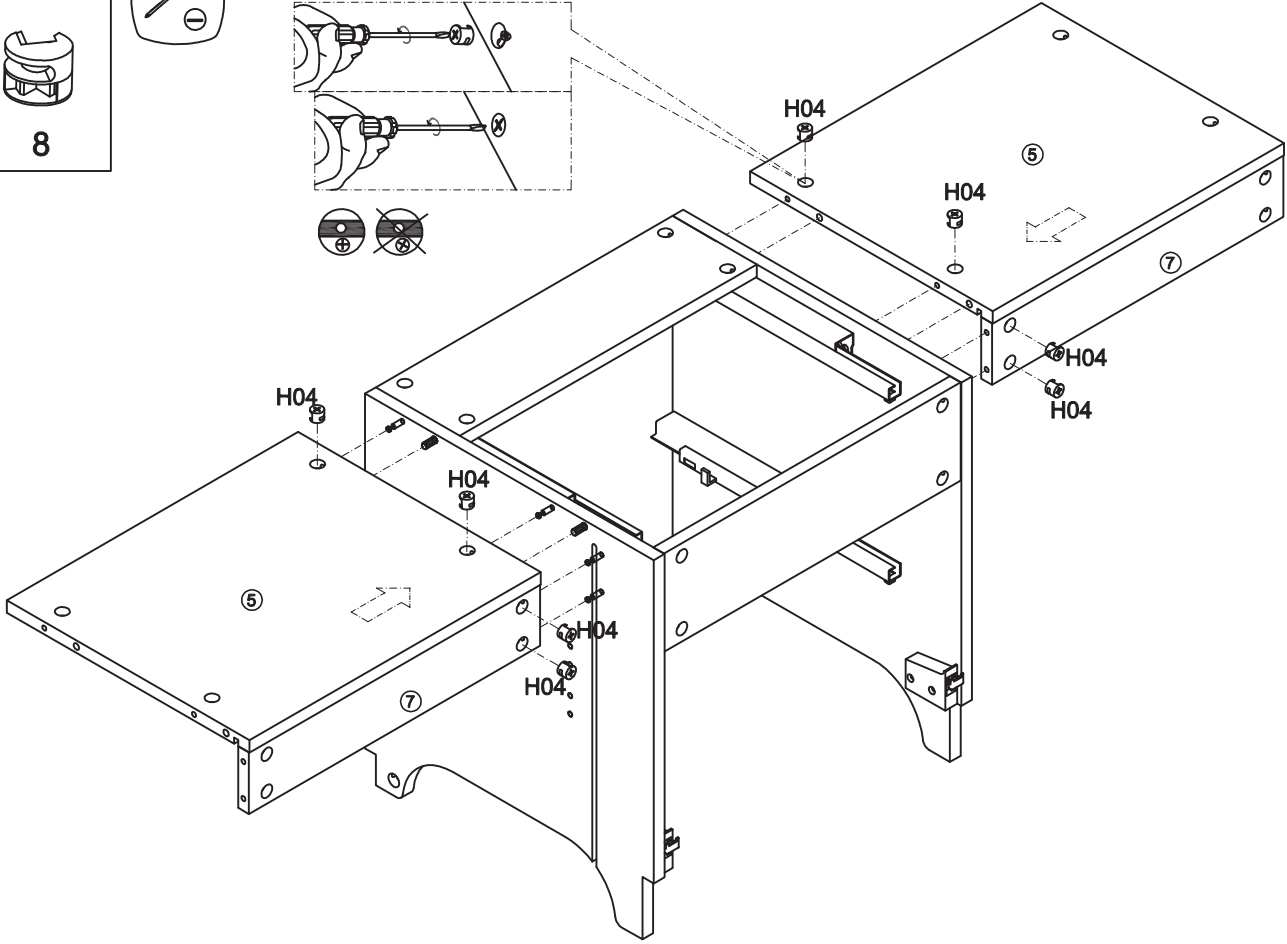
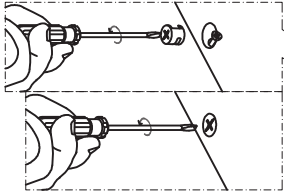
3



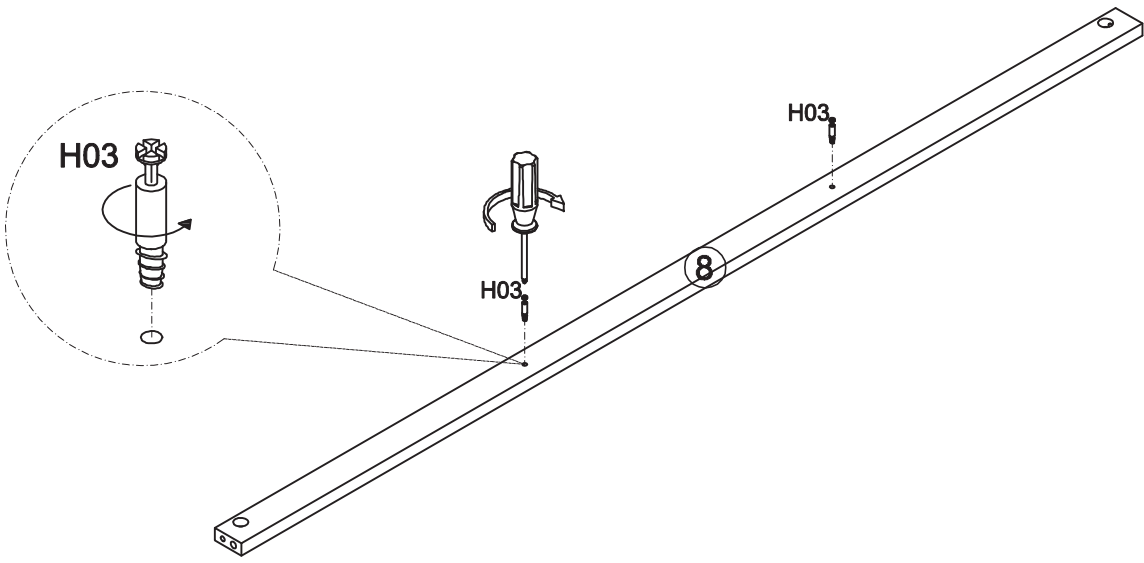
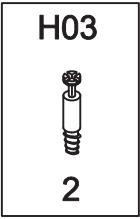
4



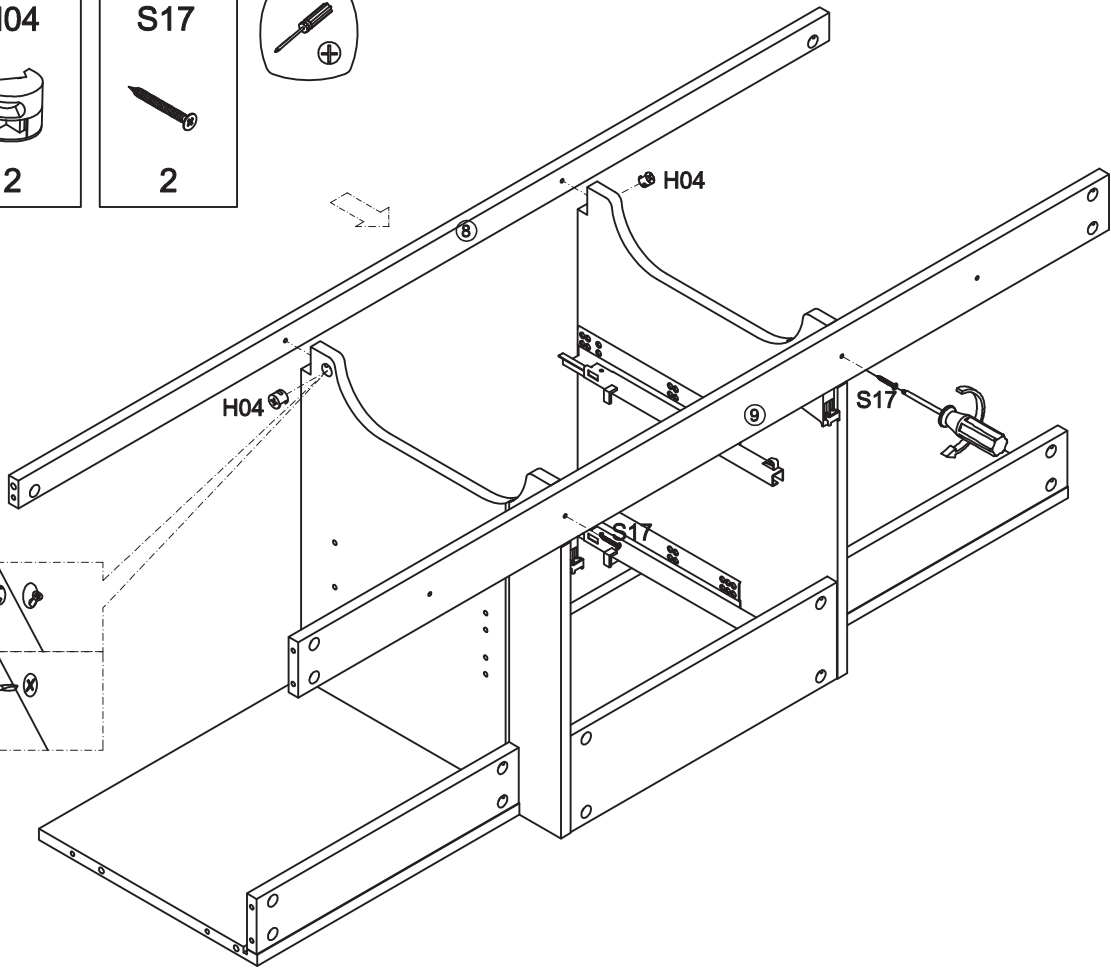
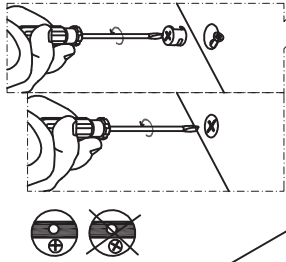
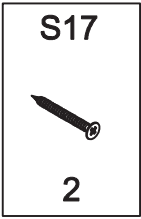
5



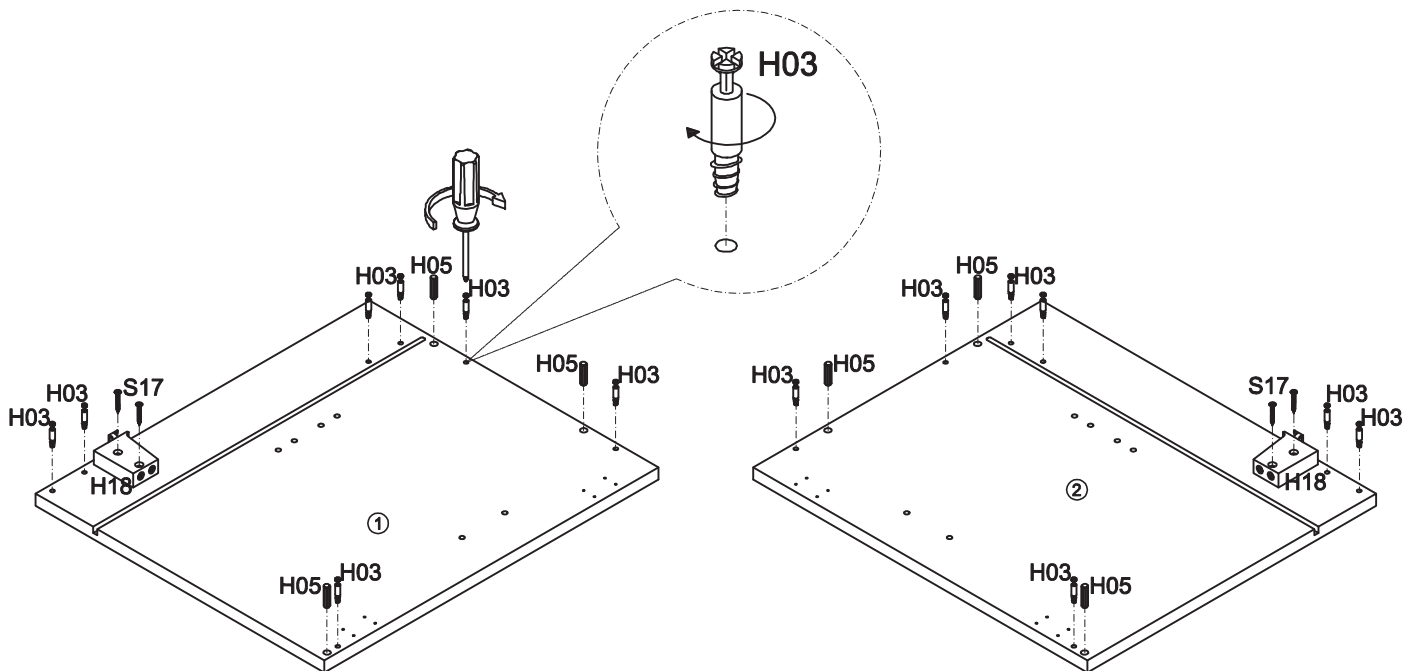
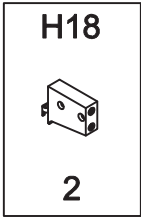
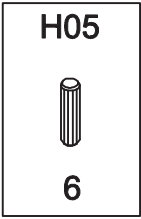
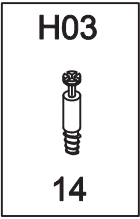
6



7



8

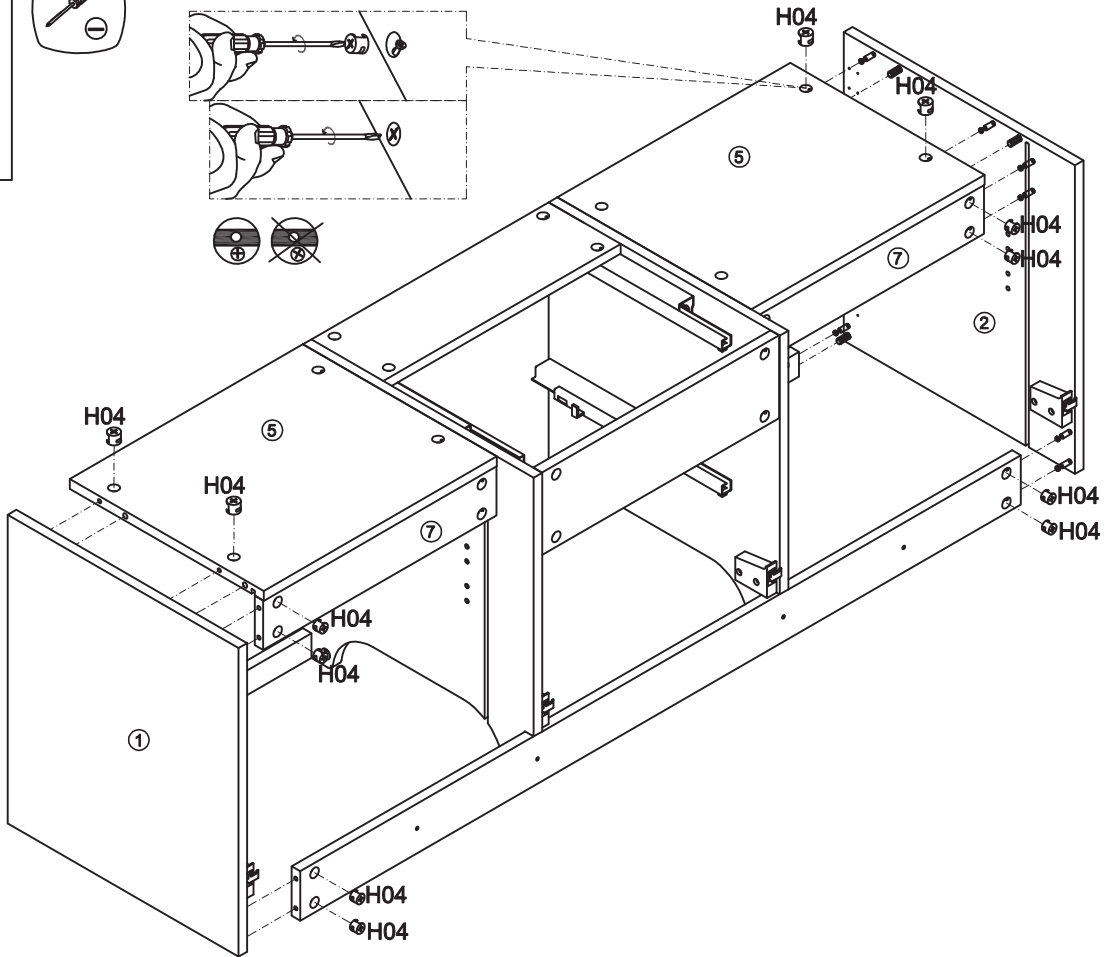
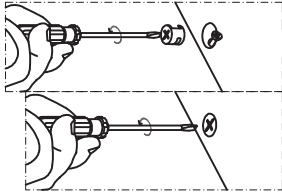


9

H04



12

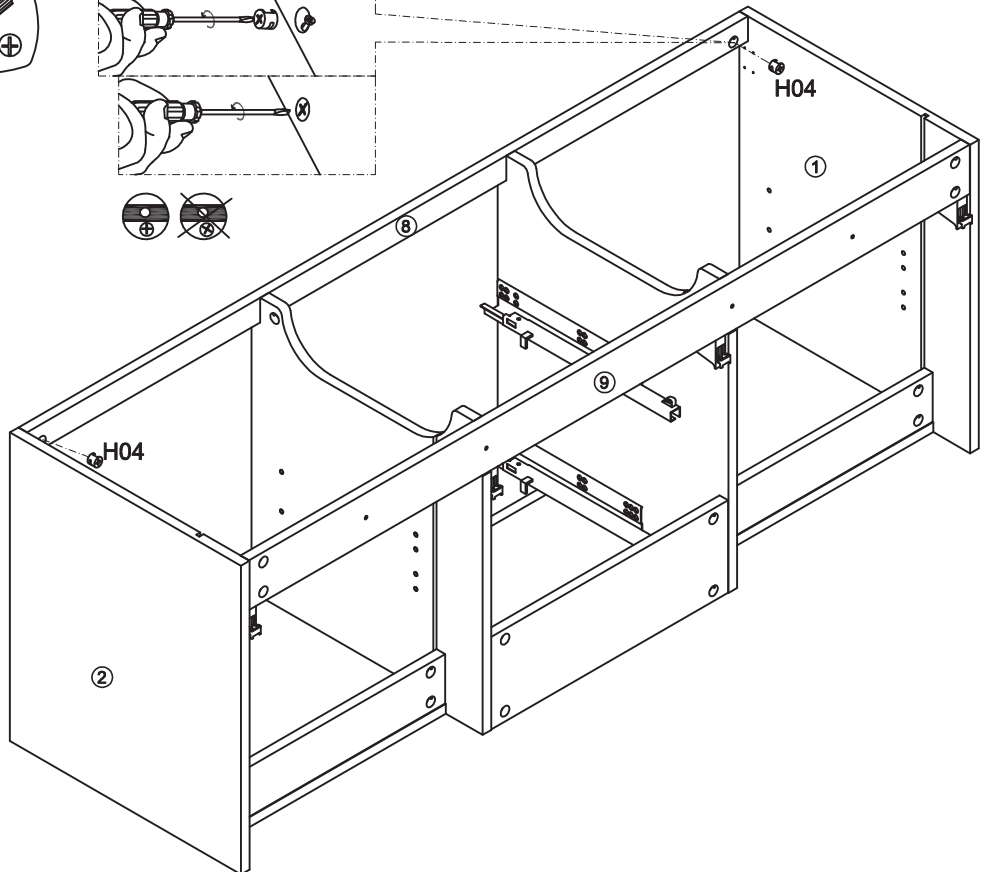
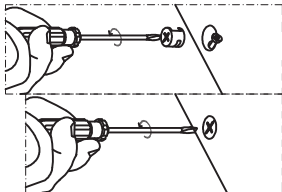


10

H04

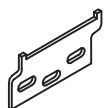


2

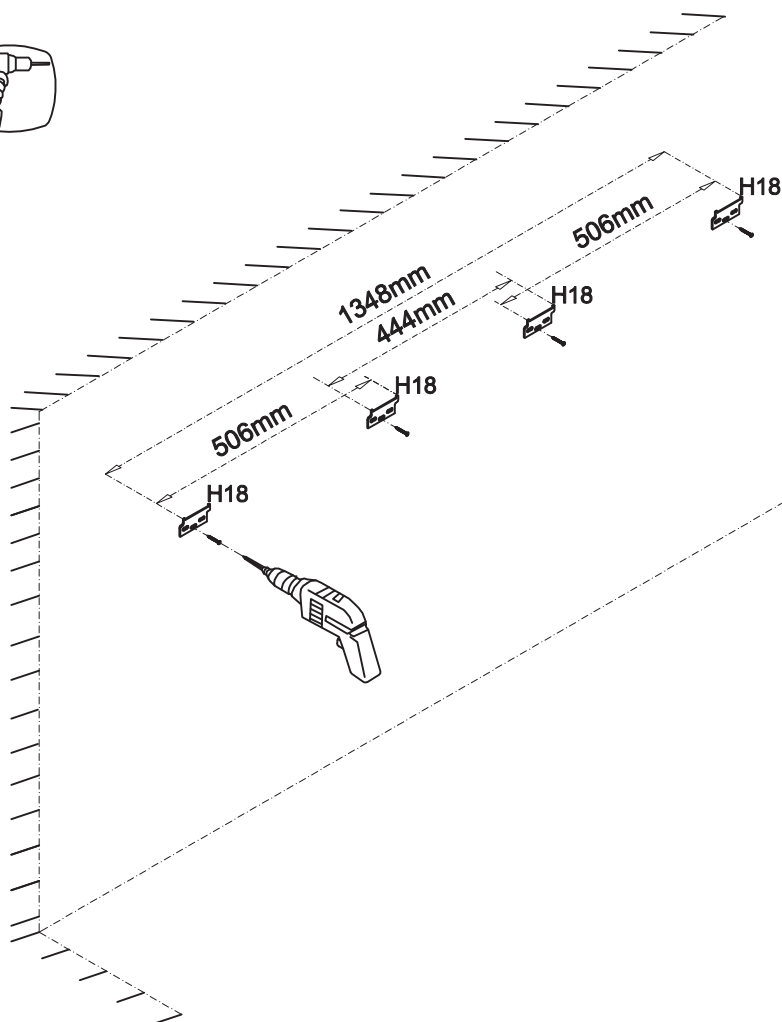


11

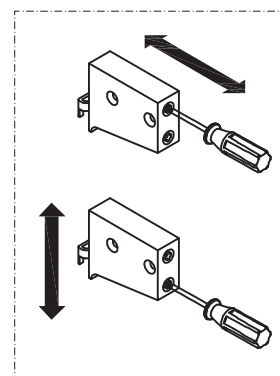
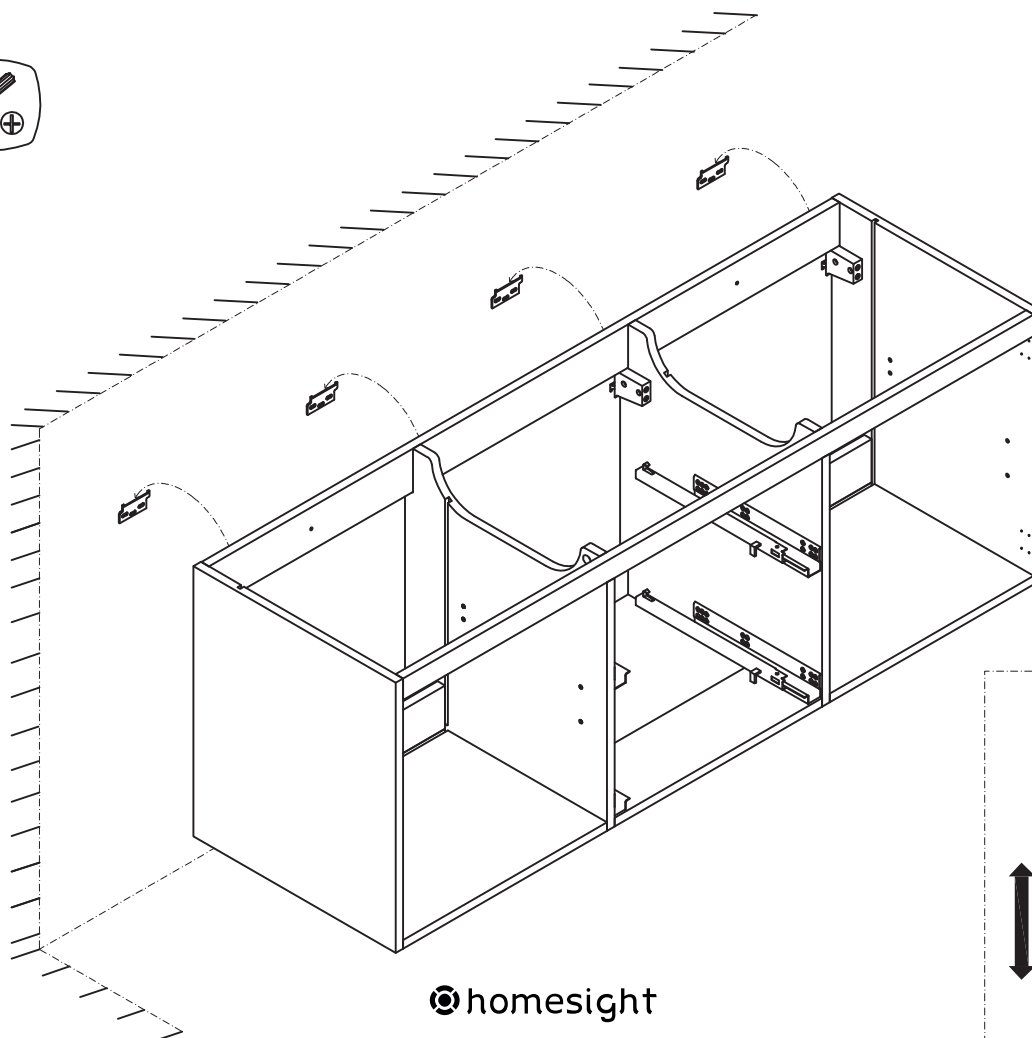
H18



4

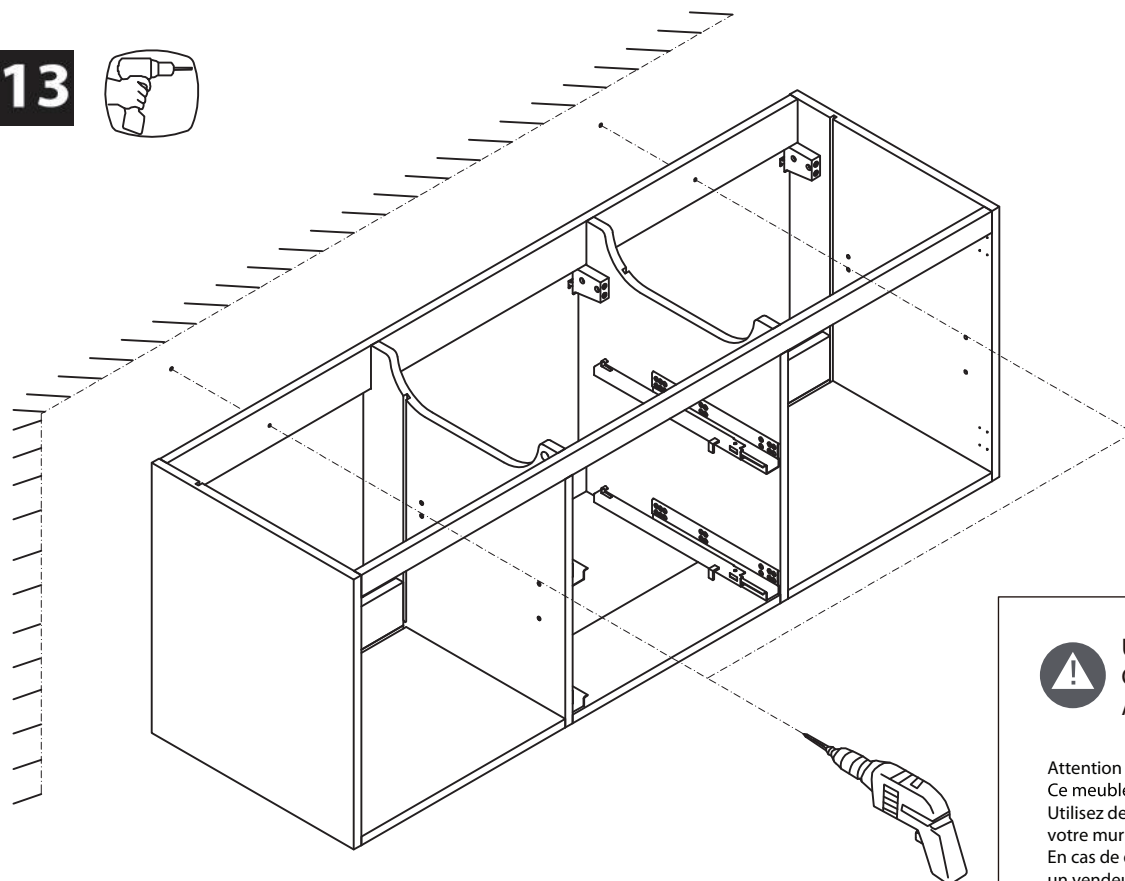


12





# 13

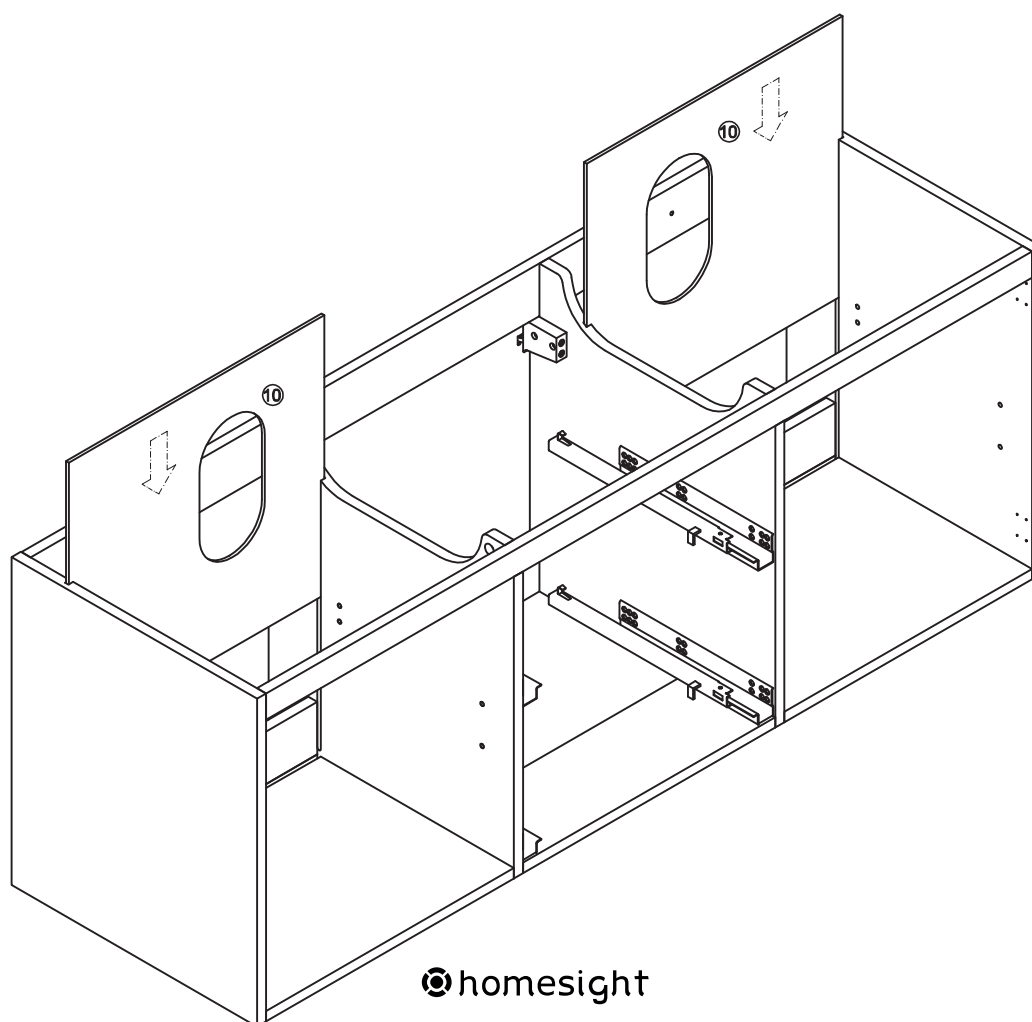


**UTILISEZ LES VIS ET LES  
CHEVILLES ADAPTÉES  
À VOS MURS**

Attention !  
Ce meuble doit être fixé au mur.  
Utilisez des vis adaptées au matériau de  
votre mur ( non incluses ).  
En cas de doute, demandez conseil à  
un vendeur.



# 14

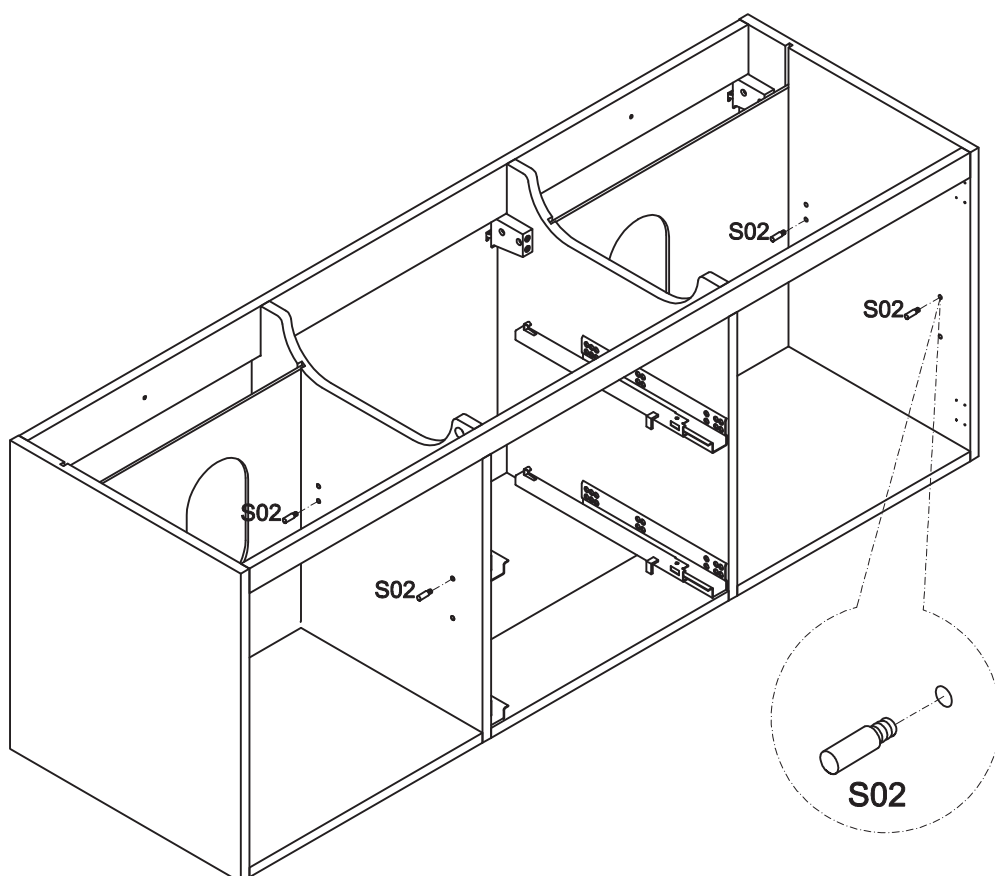


15

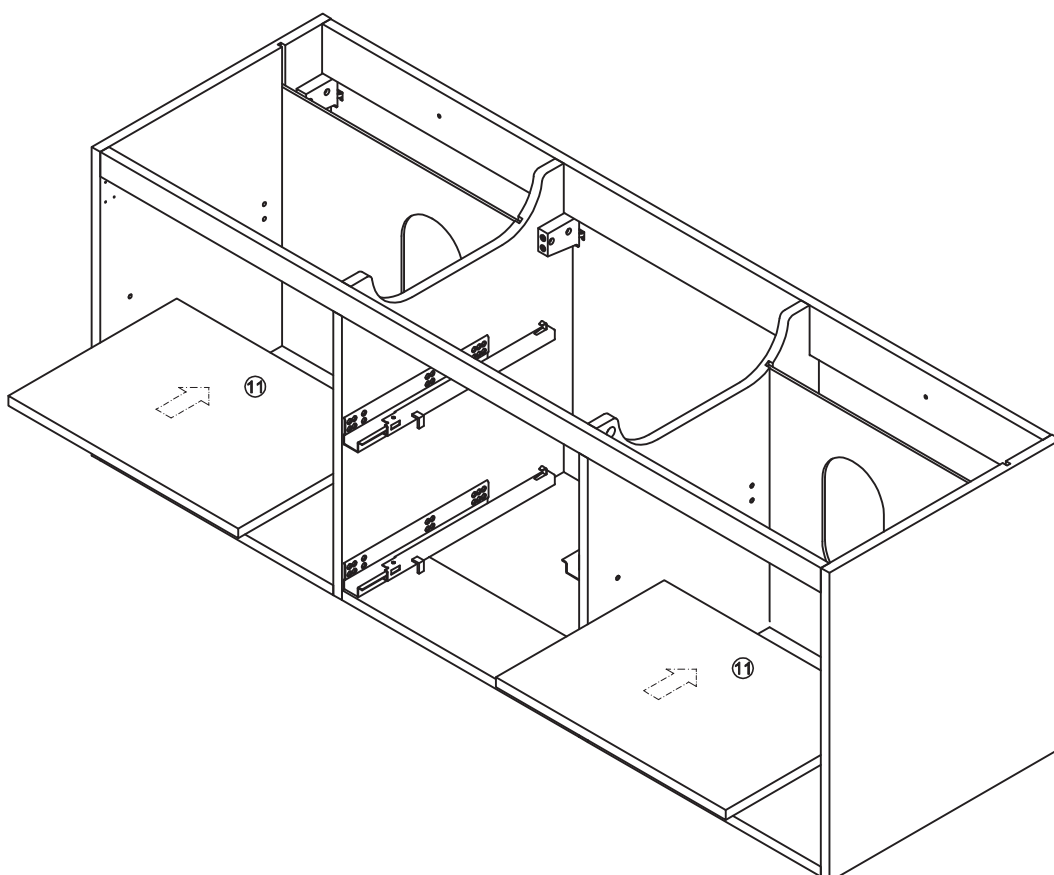
S02



8



16

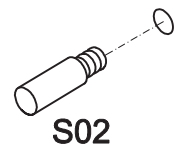
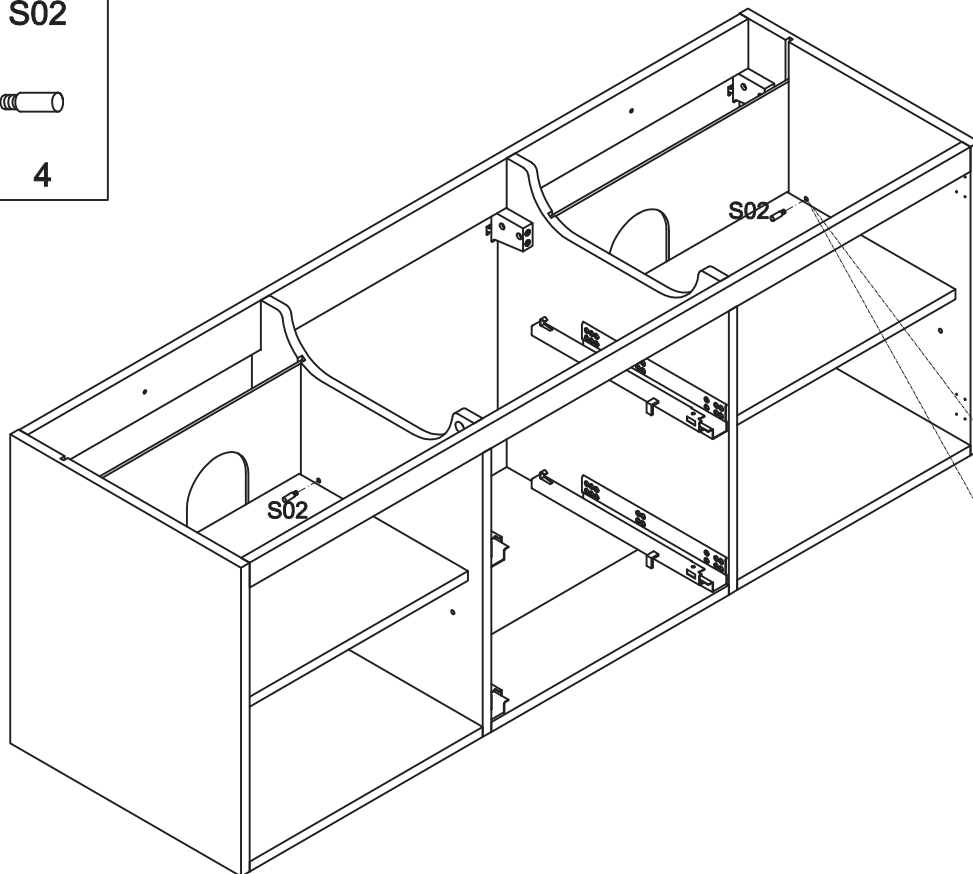


17

S02



4



18

S08



4

H11

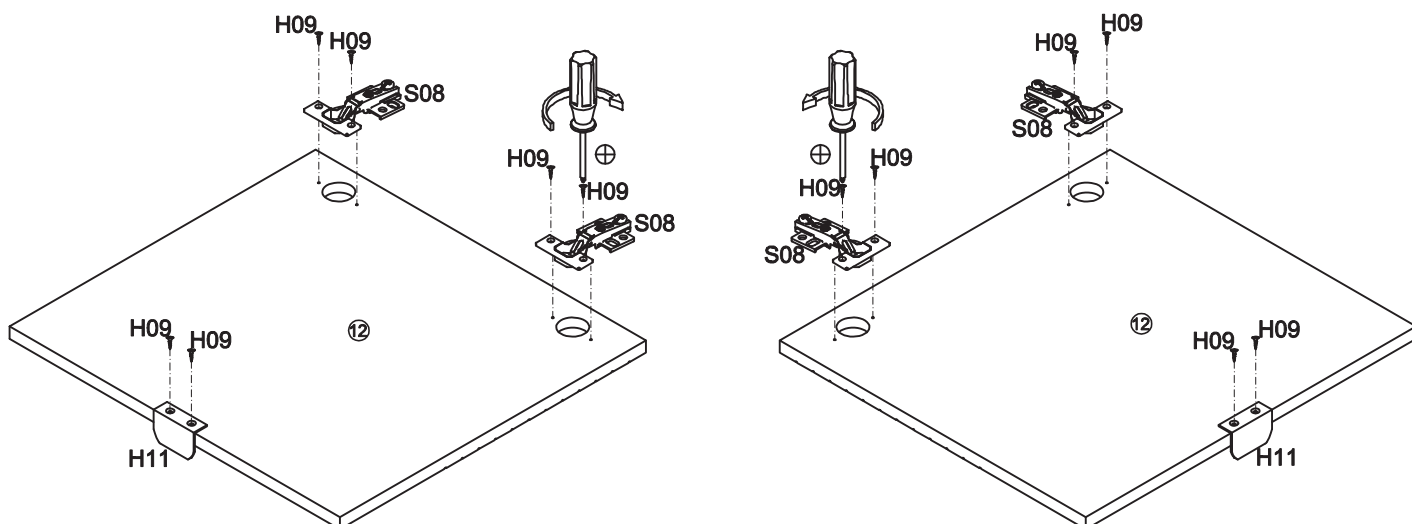


2

H09



12



19

H09

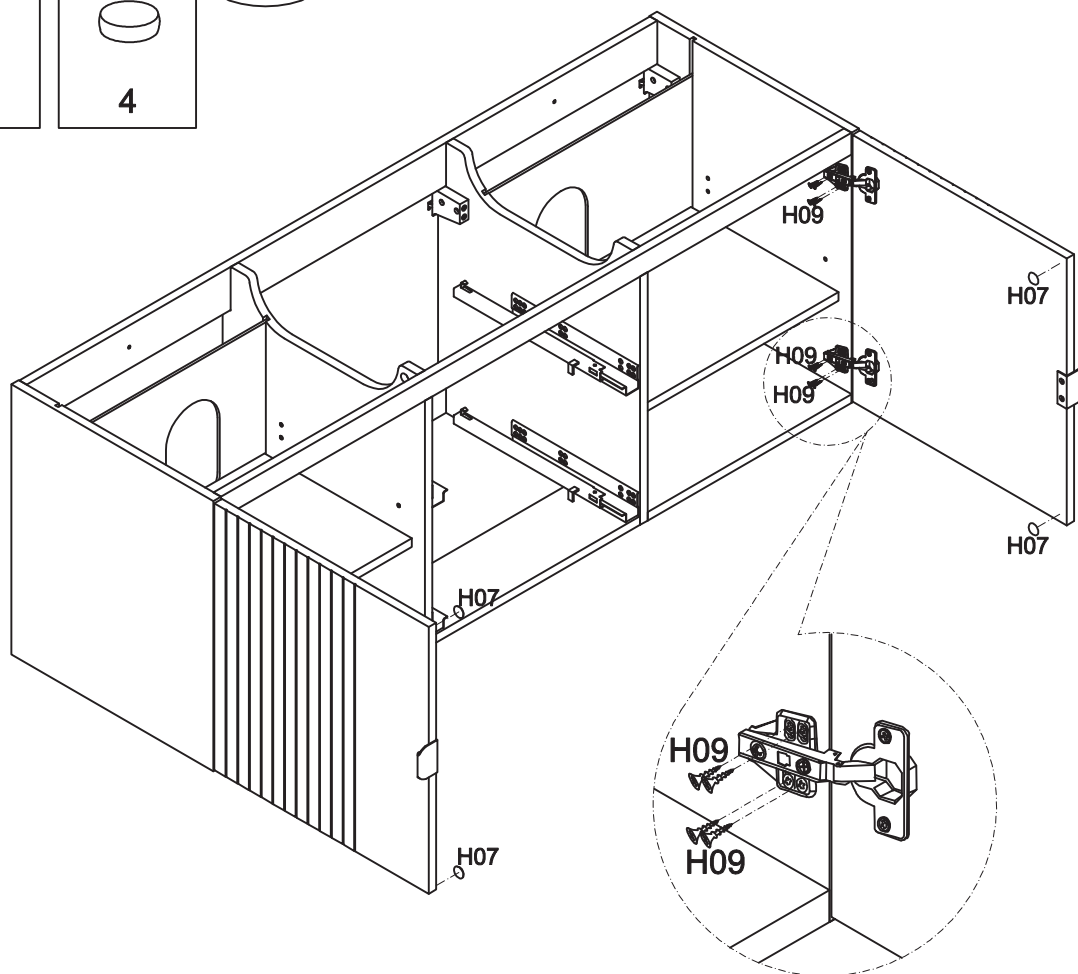


16

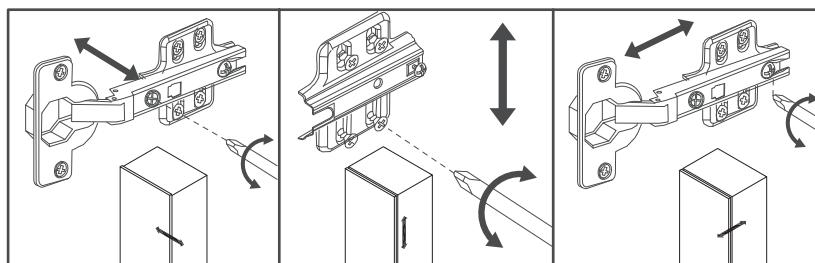
H07



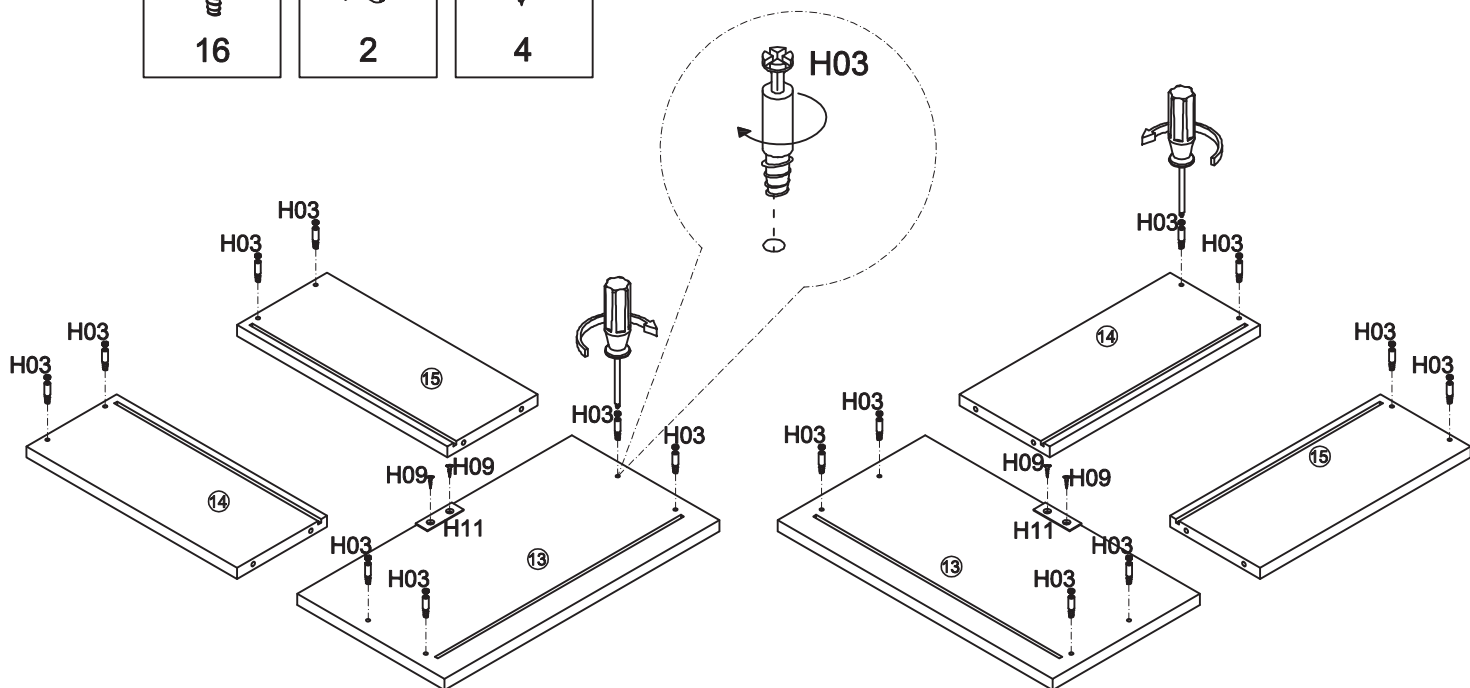
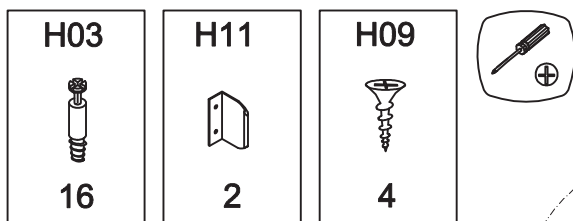
4



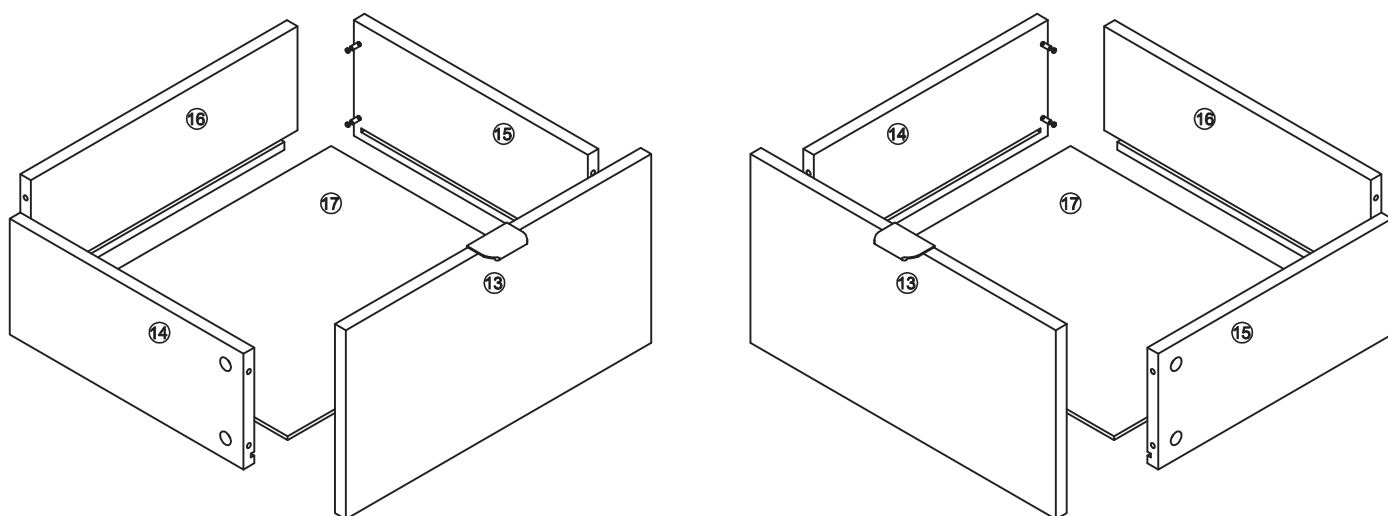
## REGLAGES DES PORTES



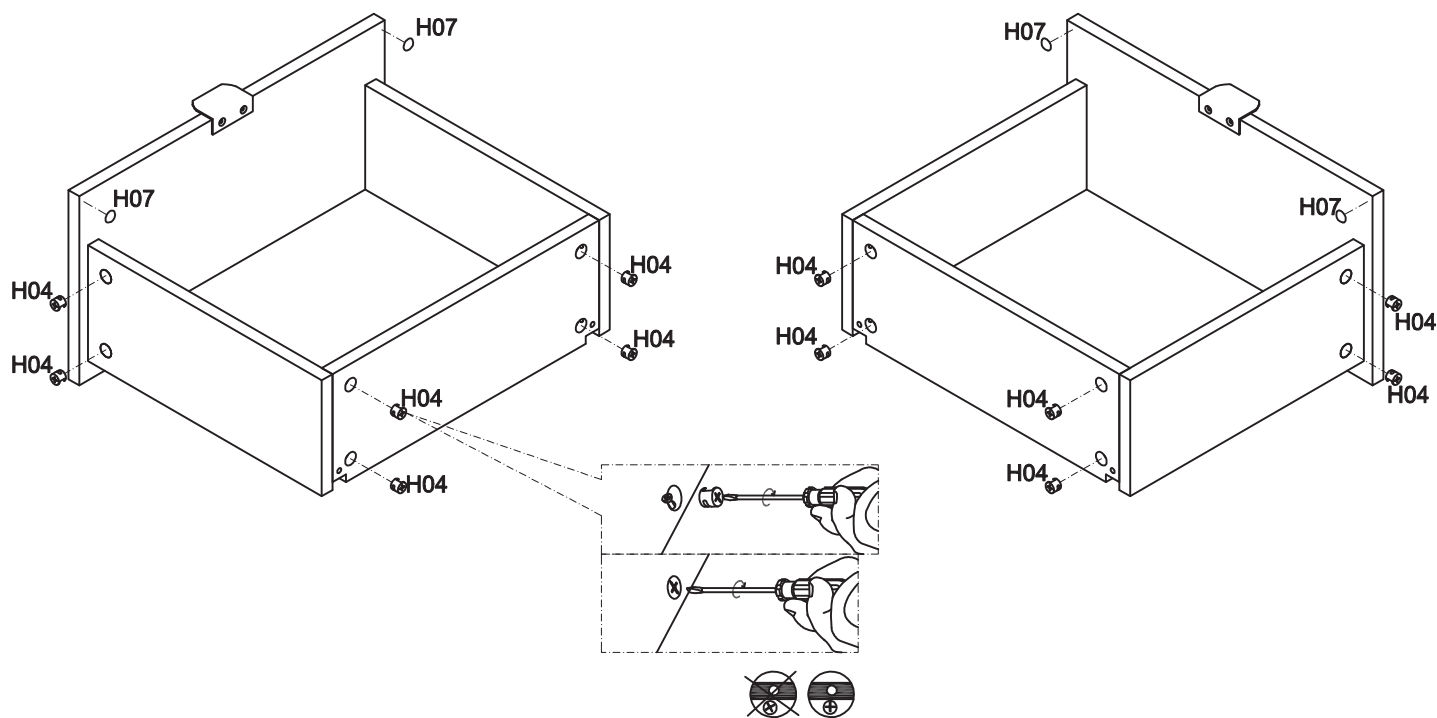
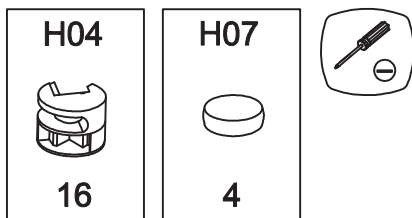
20



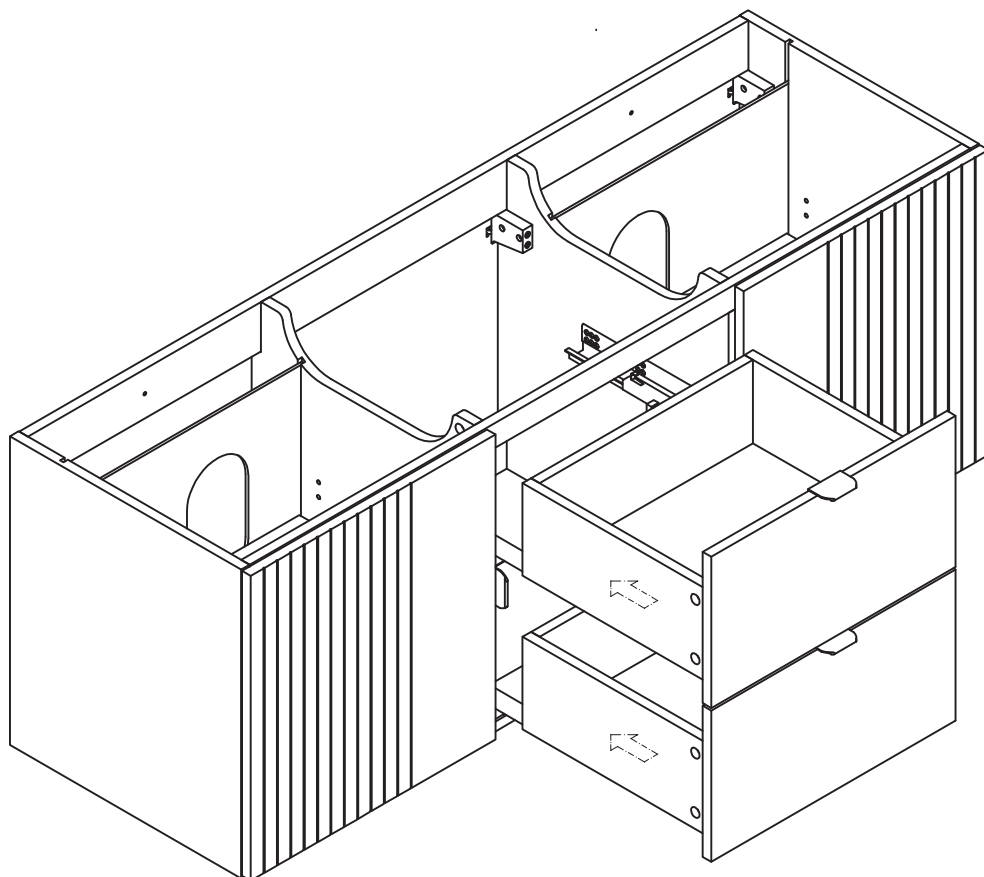
21



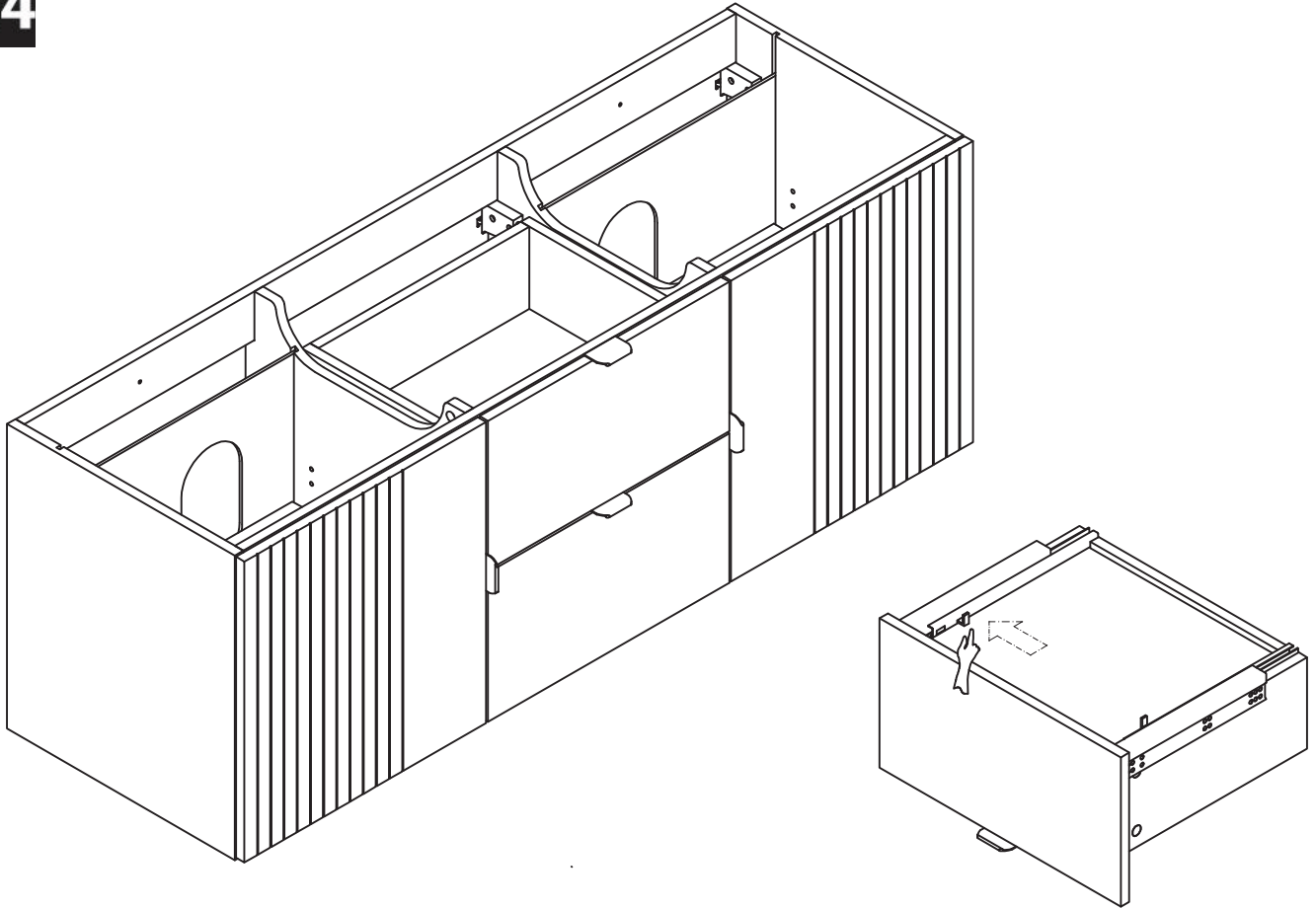
22



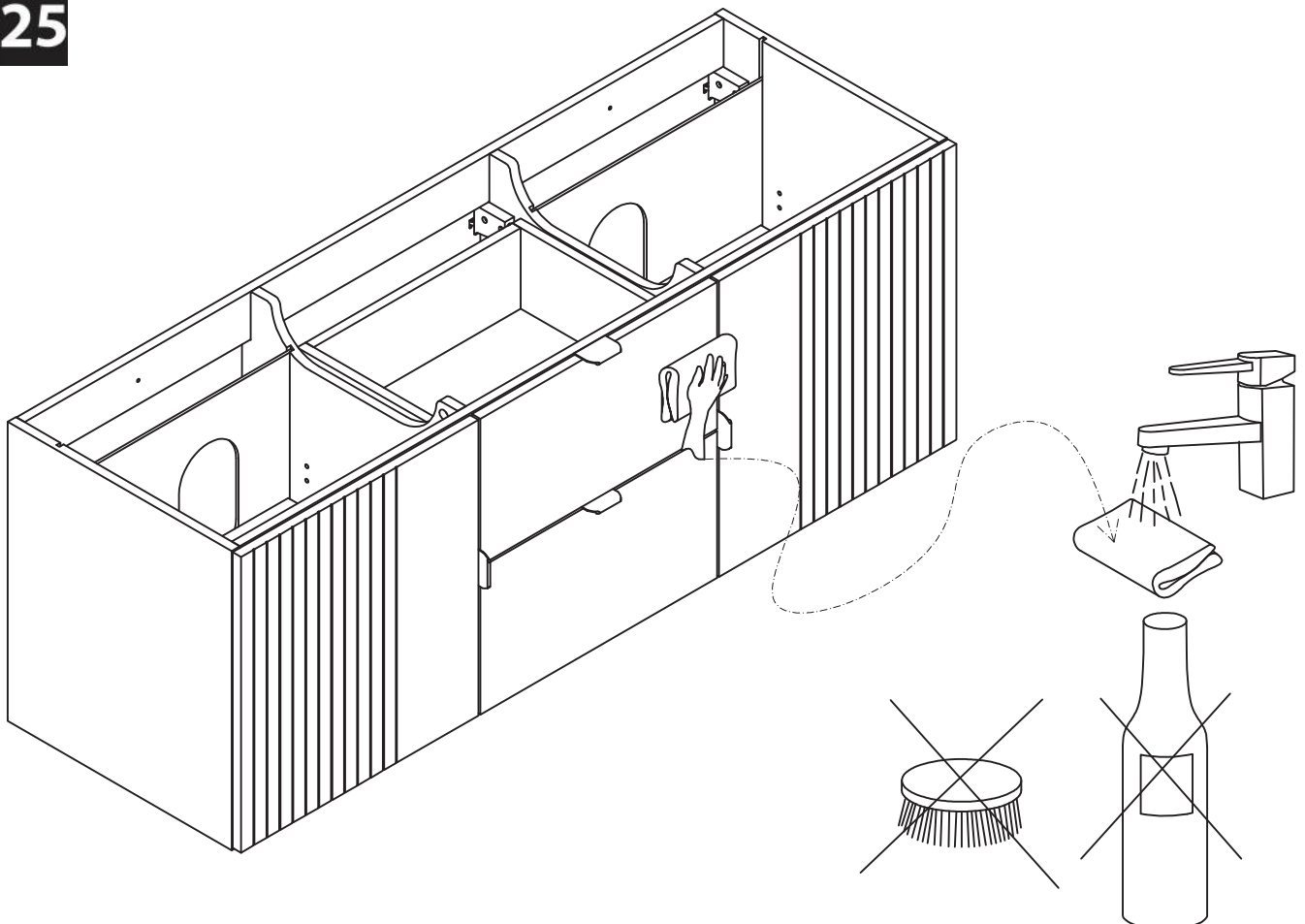
23

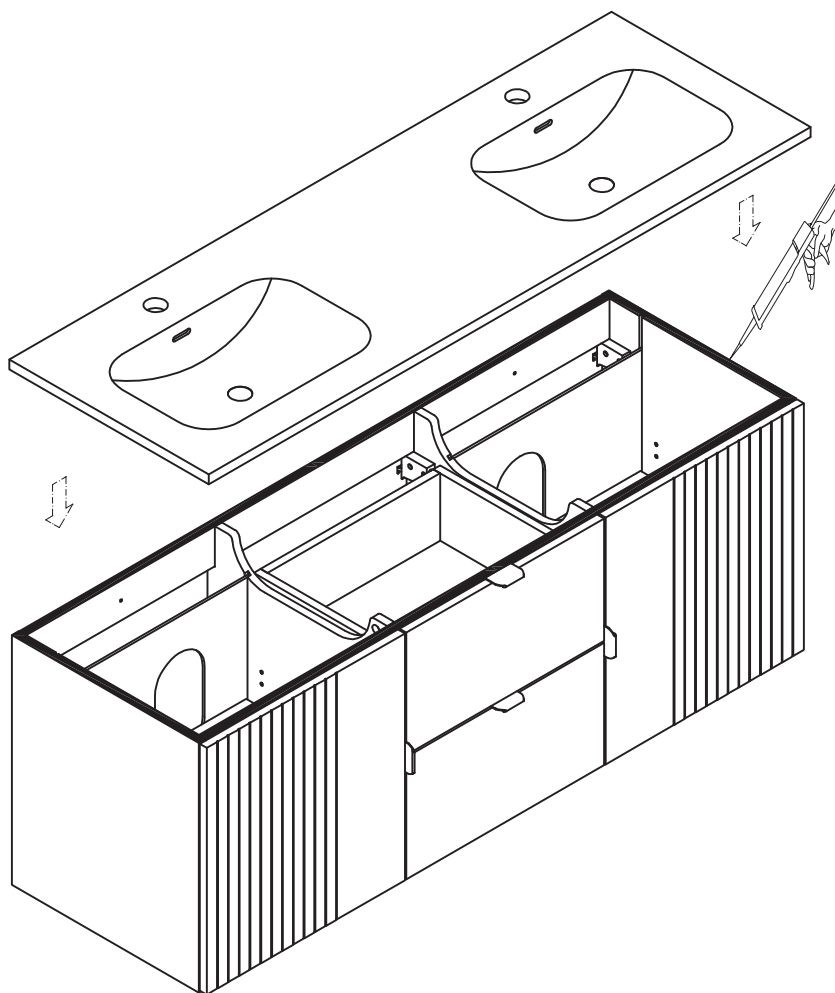


24



25





Structure pieds vendue séparément

